

# Box Mount Recept. (Front Mount)

RS Series • MIL-DTL-5015 Series Reverse Bayonet



## RS02 Cross-Reference & Compatibility

Compatible Brands	Equivalents	Mates
AS95234	AS95234/2	AS95234/6, AS95234/9
VG95234	VG95234 Receptacles	VG95234 Plugs
Amphenol	GTS02, GTC02	GTS06, GTC06
	ACA3102-B 97B-3102, 97B-4102	ACA3106-B 97B-3106, 97B-4106
ITT Cannon	CA3102-B	CA3106-B
	CB2	CB6
Veam	CIR02	CIR06

## RS02 W N 20-15 S N - 03

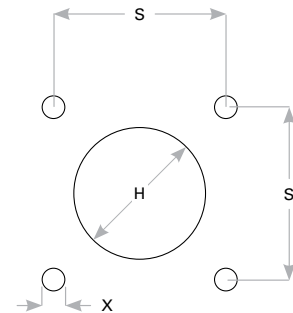
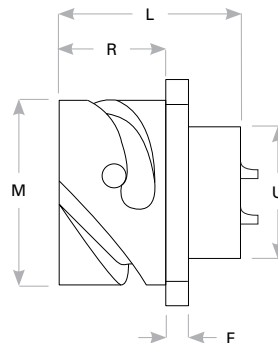
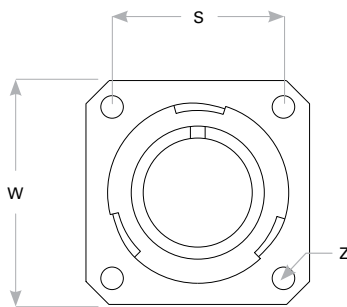
- 1 **BASIC PART NUMBER**  
**RS02** Box mount solder receptacle (front mount)  
**RC02** Box mount crimp receptacle (front mount)
- 2 **SHELL MATERIAL & FINISH**  
**W** Aluminum, olive drab cadmium
- 3 **INSERT MATERIAL**  
**N** Standard resilient neoprene  
**V** Viton, chemical resistant, high temperature  
**F** Flame retardant, low smoke, halogen free
- 4 **SHELL SIZE & INSERT ARRANGEMENT**  
 See Insert Arrangement Selection table, p. V-12
- 5 **CONTACT STYLE**  
**P** Pin  
**S** Socket
- 6 **INSERT ROTATION**  
**N** NORMAL or W, X, Y, Z, see p. V-12 for availability
- 7 **OPTIONAL ACCESSORY KIT (OMIT FOR NONE)**  
**02** Protective cover + mounting gasket  
**03** 02 kit + mounting bracket + sealing screws

Note: See part builder (p. V-11) for additional kit options.

## Receptacle Dimensions

Shell Size	W	Z	L	R	M	F	U	S	X	H
10SL	1.000 (25.4)	.126 (3.2)	1.087 (27.6)	.559 (14.2)	.717 (18.2)	.110 (2.8)	.638 (16.2)	.717 (18.2)	.134 (3.4)	.661 (16.8)
14S	1.181 (30.0)	.126 (3.2)	1.087 (27.6)	.559 (14.2)	.969 (24.6)	.126 (3.2)	.756 (19.2)	.906 (23.0)	.134 (3.4)	.776 (19.7)
16S	1.280 (32.5)	.126 (3.2)	1.087 (27.6)	.559 (14.2)	1.079 (27.4)	.126 (3.2)	.882 (22.4)	.969 (24.6)	.134 (3.4)	.902 (22.9)
16	1.280 (32.5)	.126 (3.2)	1.331 (33.8)	.748 (19.0)	1.079 (27.4)	.126 (3.2)	.882 (22.4)	.969 (24.6)	.134 (3.4)	.902 (22.9)
18	1.378 (35.0)	.126 (3.2)	1.331 (33.8)	.748 (19.0)	1.213 (30.8)	.157 (4.0)	1.008 (25.6)	1.063 (27.0)	.134 (3.4)	1.028 (26.1)
20	1.496 (38.0)	.126 (3.2)	1.331 (33.8)	.748 (19.0)	1.346 (34.2)	.157 (4.0)	1.142 (29.0)	1.157 (29.4)	.134 (3.4)	1.161 (29.5)
22	1.614 (41.0)	.126 (3.2)	1.331 (33.8)	.748 (19.0)	1.472 (37.4)	.157 (4.0)	1.268 (32.2)	1.252 (31.8)	.134 (3.4)	1.287 (32.7)
24	1.752 (44.5)	.146 (3.7)	1.406 (35.7)	.811 (20.6)	1.610 (40.9)	.157 (4.0)	1.390 (35.3)	1.374 (34.9)	.154 (3.9)	1.417 (36.0)
28	2.000 (50.8)	.146 (3.7)	1.406 (35.7)	.811 (20.6)	1.839 (46.7)	.157 (4.0)	1.630 (41.4)	1.563 (39.7)	.154 (3.9)	1.654 (42.0)
32	2.244 (57.0)	.169 (4.3)	1.469 (37.3)	.874 (22.2)	2.102 (53.4)	.157 (4.0)	1.882 (47.8)	1.752 (44.5)	.177 (4.5)	1.902 (48.3)
36	2.500 (63.5)	.169 (4.3)	1.469 (37.3)	.874 (22.2)	2.346 (59.6)	.157 (4.0)	2.130 (54.1)	1.937 (49.2)	.177 (4.5)	2.150 (54.6)

Dimensions are in inches (mm).



Panel Cutout

Rev. 1832