

## RS03 W N 20-15 S N - 03

- 1 **BASIC PART NUMBER**  
**RS03** Box mount solder receptacle (rear mount)  
**RC03** Box mount crimp receptacle (rear mount)
- 2 **SHELL MATERIAL & FINISH**  
**W** Aluminum, olive drab cadmium
- 3 **INSERT MATERIAL**  
**N** Standard resilient neoprene  
**V** Viton, chemical resistant, high temperature  
**F** Flame retardant, low smoke, halogen free
- 4 **SHELL SIZE & INSERT ARRANGEMENT**  
 See Insert Arrangement Selection table, p. V-12
- 5 **CONTACT STYLE**  
**P** Pin  
**S** Socket
- 6 **INSERT ROTATION**  
**N** NORMAL or W, X, Y, Z, see p. V-12 for availability
- 7 **OPTIONAL ACCESSORY KIT (OMIT FOR NONE)**  
**02** Protective cover + mounting gasket  
**03** 02 kit + mounting bracket + sealing screws

**Note:** See part builder (p. V-11) for additional kit options.



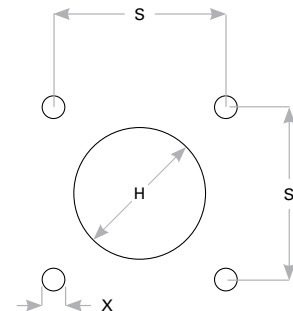
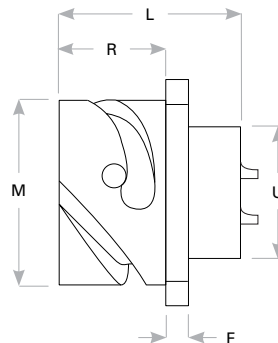
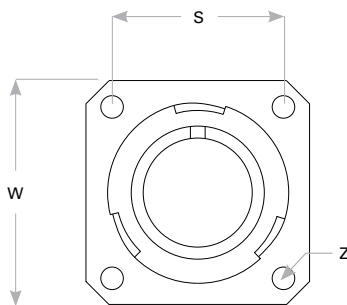
### RS03 Cross-Reference & Compatibility

Compatible Brands	Equivalents	Mates
<b>AS95234</b>	AS95234/3	AS95234/6, AS95234/9
<b>VG95234</b>	VG95234 Receptacles	VG95234 Plugs
<b>Amphenol</b>	–	GTS06, GTC06
	97B-3103, 97B-4103	ACA3106-B 97B-3106, 97B-4106
<b>ITT Cannon</b>	–	CA3106-B
	–	CB6
<b>Veam</b>	CIR03	CIR06

### Receptacle Dimensions

Shell Size	W	Z	L	R	M	F	U	S	X	H
<b>10SL</b>	1.000 (25.4)	.126 (3.2)	1.087 (27.6)	.717 (18.2)	.717 (18.2)	.110 (2.8)	.638 (16.2)	.717 (18.2)	.134 (3.4)	.732 (18.6)
<b>14S</b>	1.181 (30.0)	.126 (3.2)	1.087 (27.6)	.717 (18.2)	.969 (24.6)	.126 (3.2)	.756 (19.2)	.906 (23.0)	.134 (3.4)	.984 (25.0)
<b>16S</b>	1.280 (32.5)	.126 (3.2)	1.087 (27.6)	.717 (18.2)	1.079 (27.4)	.126 (3.2)	.882 (22.4)	.969 (24.6)	.134 (3.4)	1.094 (27.8)
<b>16</b>	1.280 (32.5)	.126 (3.2)	1.331 (33.8)	.909 (23.1)	1.079 (27.4)	.126 (3.2)	.882 (22.4)	.969 (24.6)	.134 (3.4)	1.094 (27.8)
<b>18</b>	1.378 (35.0)	.126 (3.2)	1.331 (33.8)	.909 (23.1)	1.213 (30.8)	.157 (4.0)	1.008 (25.6)	1.063 (27.0)	.134 (3.4)	1.228 (31.2)
<b>20</b>	1.496 (38.0)	.126 (3.2)	1.331 (33.8)	.909 (23.1)	1.346 (34.2)	.157 (4.0)	1.142 (29.0)	1.157 (29.4)	.134 (3.4)	1.361 (34.6)
<b>22</b>	1.614 (41.0)	.126 (3.2)	1.331 (33.8)	.909 (23.1)	1.472 (37.4)	.157 (4.0)	1.268 (32.2)	1.252 (31.8)	.134 (3.4)	1.487 (37.8)
<b>24</b>	1.752 (44.5)	.146 (3.7)	1.409 (35.8)	.909 (23.1)	1.610 (40.9)	.157 (4.0)	1.390 (35.3)	1.374 (34.9)	.154 (3.9)	1.625 (41.3)
<b>28</b>	2.000 (50.8)	.146 (3.7)	1.409 (35.8)	.948 (24.1)	1.839 (46.7)	.157 (4.0)	1.630 (41.4)	1.563 (39.7)	.154 (3.9)	1.854 (47.1)
<b>32</b>	2.244 (57.0)	.169 (4.3)	1.469 (37.3)	.948 (24.1)	2.102 (53.4)	.157 (4.0)	1.882 (47.8)	1.752 (44.5)	.177 (4.5)	2.117 (53.8)
<b>36</b>	2.500 (63.5)	.169 (4.3)	1.469 (37.3)	.948 (24.1)	2.346 (59.6)	.157 (4.0)	2.130 (54.1)	1.937 (49.2)	.177 (4.5)	2.361 (60.0)

Dimensions are in inches (mm).



Panel Cutout

Rev. 1832