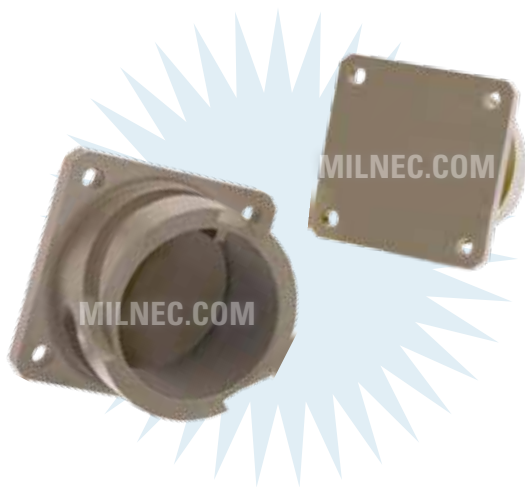


Stowage Receptacle

RS Series • MIL-DTL-5015 Series Reverse Bayonet



RSCD - 16S W - 03

- 1 **BASIC PART NUMBER**
RSCD Stowage receptacle
- 2 **SHELL SIZE**
See Stowage Receptacle Dimensions table below
- 3 **MATERIAL & FINISH**
W Aluminum, olive drab cadmium
- 4 **OPTIONAL ACCESSORY KIT (OMIT FOR NONE)**
 - 02 Protective cover + mounting gasket
 - 03 02 kit + mounting bracket + sealing screws

Note: See part builder (p. V-11) for additional kit options.

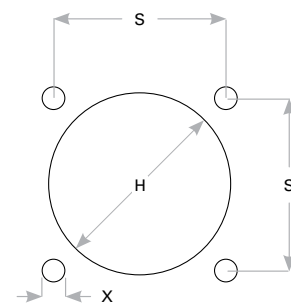
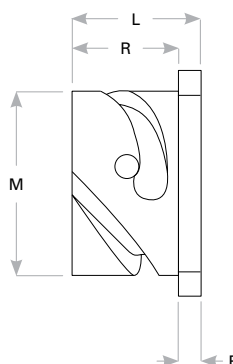
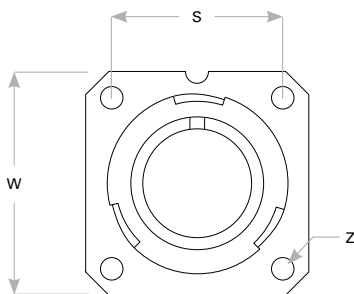
RSCD Compatibility

Compatible Brands	Plugs
AS95234	AS95234/6, AS95234/9
VG95234	VG95234 Plugs
Amphenol	GTS06, GTC06, ACA3106 • B 97B-4106, 97B-4108
ITT Cannon	CB6, CA3106 • B
Veam	CIR06

Stowage Receptacle Dimensions

Shell Size	W	Z	L	R	M	F	S	X	H
10SL	1.000 (25.4)	.126 (3.2)	.669 (17.0)	.559 (14.2)	.717 (18.2)	.110 (2.8)	.717 (18.2)	.134 (3.4)	.732 (18.6)
14S	1.181 (30.0)	.126 (3.2)	.685 (17.4)	.559 (14.2)	.969 (24.6)	.126 (3.2)	.906 (23.0)	.134 (3.4)	.984 (25.0)
16S	1.280 (32.5)	.126 (3.2)	.685 (17.4)	.559 (14.2)	1.079 (27.4)	.126 (3.2)	.969 (24.6)	.134 (3.4)	1.094 (27.8)
16	1.280 (32.5)	.126 (3.2)	.874 (22.2)	.748 (19.0)	1.079 (27.4)	.126 (3.2)	.969 (24.6)	.134 (3.4)	1.094 (27.8)
18	1.378 (35.0)	.126 (3.2)	.905 (23.0)	.748 (19.0)	1.213 (30.8)	.157 (4.0)	1.063 (27.0)	.134 (3.4)	1.228 (31.2)
20	1.496 (38.0)	.126 (3.2)	.905 (23.0)	.748 (19.0)	1.346 (34.2)	.157 (4.0)	1.157 (29.4)	.134 (3.4)	1.361 (34.6)
22	1.614 (41.0)	.126 (3.2)	.905 (23.0)	.748 (19.0)	1.472 (37.4)	.157 (4.0)	1.252 (31.8)	.134 (3.4)	1.487 (37.8)
24	1.752 (44.5)	.146 (3.7)	.968 (24.6)	.811 (20.6)	1.610 (40.9)	.157 (4.0)	1.374 (34.9)	.154 (3.9)	1.625 (41.3)
28	2.000 (50.8)	.146 (3.7)	.968 (24.6)	.811 (20.6)	1.839 (46.7)	.157 (4.0)	1.563 (39.7)	.154 (3.9)	1.854 (47.1)
32	2.244 (57.0)	.169 (4.3)	1.031 (26.2)	.874 (22.2)	2.102 (53.4)	.157 (4.0)	1.752 (44.5)	.177 (4.5)	2.117 (53.8)
36	2.500 (63.5)	.169 (4.3)	1.031 (26.2)	.874 (22.2)	2.346 (56.6)	.157 (4.0)	1.937 (49.2)	.177 (4.5)	2.361 (60.0)

Dimensions are in inches (mm).



Panel Cutout

Rev. 1832