

TCB4 - S - 16 N

- 1 **BASIC PART NUMBER**
TCB4 90° strain relief backshell
- 2 **COUPLING STYLE**
N Non-self-locking coupling
S Self-locking coupling
- 3 **SHELL SIZE**
See Strain Relief Dimensions table below
- 4 **MATERIAL & FINISH**
N Aluminum, electroless nickel
W Aluminum, olive drab cadmium
K Stainless steel, passivated (self-locking only)



Note: See part builder (p. E-13) for additional kit options.



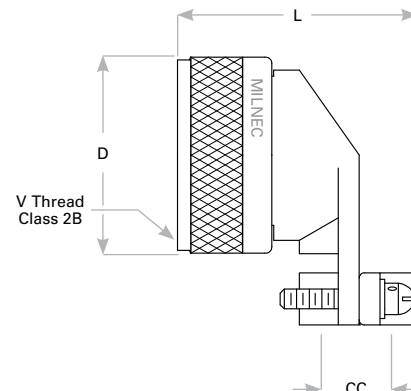
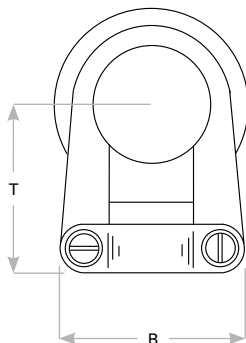
Strain relief and cable management

Angled strain relief is useful in environments where space is limited and cable management is required. The self-locking design is recommended for high-vibration environments where added protection is required.

Strain Relief Dimensions

Shell Size	T	B	V Thread Class 2B	L	D	CC Cable Clearance	
						Min	Max
10	.805 (20.4)	.812 (20.6)	.625-24 UNEF	1.339 (34.0)	1.010 (25.7)	.187 (4.7)	.286 (7.3)
12	.867 (22.0)	.968 (24.6)	.750-20 UNEF	1.532 (38.9)	1.135 (28.8)	.291 (7.4)	.416 (10.6)
14	.930 (23.6)	1.026 (26.1)	.875-20 UNEF	1.592 (40.4)	1.260 (32.0)	.351 (8.9)	.476 (12.1)
16	.994 (25.2)	1.299 (33.0)	1.000-20 UNEF	1.741 (44.2)	1.385 (35.2)	.501 (12.7)	.626 (15.9)
18	1.171 (29.7)	1.431 (36.3)	1.062-18 UNEF	1.853 (47.1)	1.510 (38.4)	.518 (13.2)	.706 (17.9)
20	1.234 (31.2)	1.537 (39.0)	1.188-18 UNEF	1.978 (50.2)	1.635 (41.5)	.581 (14.8)	.831 (21.1)
22	1.296 (32.9)	1.633 (41.5)	1.313-18 UNEF	2.108 (53.5)	1.760 (44.7)	.644 (16.4)	.956 (24.3)
24	1.358 (34.5)	1.755 (44.6)	1.438-18 UNEF	2.228 (56.6)	1.885 (47.9)	.706 (17.9)	1.081 (27.5)
28	1.572 (39.9)	2.000 (50.8)	1.750-18 UNS	2.528 (64.2)	2.135 (54.2)	.750 (19.1)	1.187 (30.1)
32	1.797 (45.6)	2.366 (60.1)	2.000-18 UNS	2.591 (65.8)	2.395 (60.8)	.875 (22.2)	1.250 (31.8)
36	1.922 (48.8)	2.476 (62.9)	2.250-16 UN	2.716 (69.0)	2.635 (66.9)	.938 (23.8)	1.375 (34.9)

Dimensions are in inches (mm).



Rev. 1225.1