

M28840/22 Type Conduit Bushing

NS Series • MIL-DTL-28840 Type Connectors

NSCB - 10 S

- 1
- 2
- 3

BASIC PART NUMBER

NSCB Conduit bushing

SHELL SIZE

See Bushing Dimensions table below

MATERIAL & FINISH

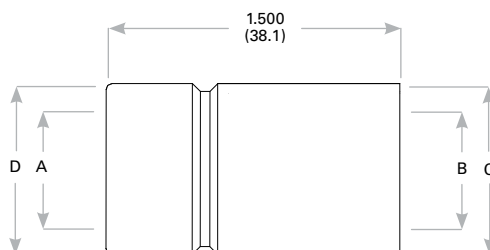
S Steel, corrosion resistant passivate per IAW SAE-AMS-QQ-P-35



Photo for example only

NSCB Compatibility

Compatible Brands	Connectors
MIL-DTL-28840	M28840/10, M28840/11, M28840/14, M28840/16



Bushing Dimensions

Bushing Size	NSCT Conduit Size	A	B	C	D
03	03	.375 (9.5)	.540 (13.7)	.625 (15.9)	.525 (13.3)
04	04	.500 (12.7)	.665 (16.9)	.750 (19.1)	.650 (16.5)
05	05	.625 (15.9)	.780 (19.8)	.875 (22.2)	.775 (19.7)
06	06	.750 (19.1)	.940 (23.9)	1.000 (25.4)	.900 (22.9)
08	08	1.000 (25.4)	1.225 (31.1)	1.375 (34.9)	1.275 (32.4)
10	10	1.250 (31.8)	1.470 (37.3)	1.625 (41.3)	1.525 (38.7)
12	12	1.500 (38.1)	1.740 (44.2)	1.875 (47.7)	1.775 (45.1)
16	16	2.000 (50.8)	2.215 (56.3)	2.375 (60.3)	2.275 (57.8)

Dimensions are in inches (mm).