

M83723/70 Type Quick-Disconnect Recept. Adapter

RY85049 Series • M85049 Type Backshells



Photo for example only

RY83723/70 W 16

- 1 **BASIC PART NUMBER**
RY83723/70
 M83723/70 type
 Quick-Disconnect Receptacle Adapter
- 2 **MATERIAL & FINISH**
A Aluminum, black anodize
G Corrosion-resistant steel, passivated
R Aluminum, electroless nickel
W Aluminum, olive drab cadmium
- 3 **SHELL SIZE**
 See Dimensions table below

RY83723/70 Compatibility

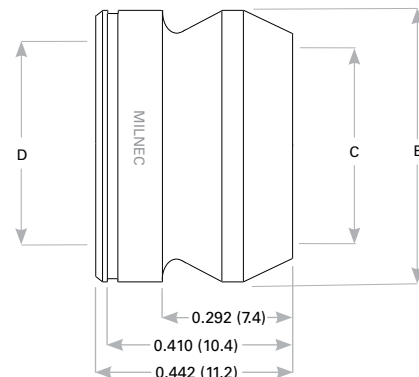
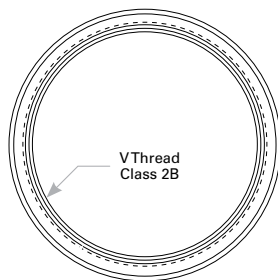
Compatible Connector Series

MIL-DTL-83723

Adapter Dimensions

Shell Size	V Thread Class 2B	D Max	C	B Max
8	9/16 - 24 UNEF	0.579 (14.7)	0.525 (13.3)	0.689 (17.5)
10	11/16 - 24 UNEF	0.714 (18.1)	0.650 (16.5)	0.814 (20.7)
12	7/8 - 20 UNEF	0.894 (22.7)	0.840 (21.3)	1.001 (25.4)
14	15/16 - 20 UNEF	0.954 (24.2)	0.900 (22.9)	1.064 (27.0)
16	1 1/16 - 18 UNEF	1.079 (27.4)	1.025 (26.0)	1.189 (30.2)
18	1 3/16 - 18 UNEF	1.204 (30.6)	1.150 (29.2)	1.330 (33.8)
20	1 5/16 - 18 UNEF	1.329 (33.8)	1.275 (32.4)	1.455 (37.0)
22	1 7/16 - 18 UNEF	1.454 (36.9)	1.400 (35.6)	1.580 (40.1)
24	1 9/16 - 18 UNEF	1.579 (40.1)	1.525 (38.7)	1.705 (43.3)

Dimensions are in inches (mm).



Rev. 1825