

Wall Mount Receptacle (Bayonet)

EV Series • MIL-DTL-83723 Series III Type Connectors

EVBO N 12-12 S N - R2(015) - 03

- 1 **BASIC PART NUMBER**
EVBO Wall mount receptacle (bayonet)
- 2 **MATERIAL & FINISH**
N Aluminum, electroless nickel
W Aluminum, olive drab cadmium
- 3 **SHELL SIZE & INSERT ARRANGEMENT**
See Insert Arrangement Selection table, p. T-14
- 4 **CONTACT STYLE**
P Pin
S Socket
- 5 **KEYING POSITION OR INSERT ROTATION**
N Normal keying or 6, 7, 8, 9, Y
N Normal rotation or 1, 2, 3, 4, 5
- 6 **OPTIONAL BACKSHELL KIT (OMIT FOR NONE)**
B2 Straight strain relief (self-locking), p. T-24
R2() Straight EMI/RFI environmental, p. T-35
(Add dash number for appropriate shell size, see p. T-35)
- 7 **OPTIONAL ACCESSORY KIT (OMIT FOR NONE)**
02 Protective cover + mounting gasket
03 02 kit + mounting bracket + sealing screws

Note: See part builder (p. T-12) for additional kit options.



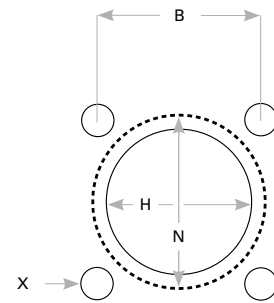
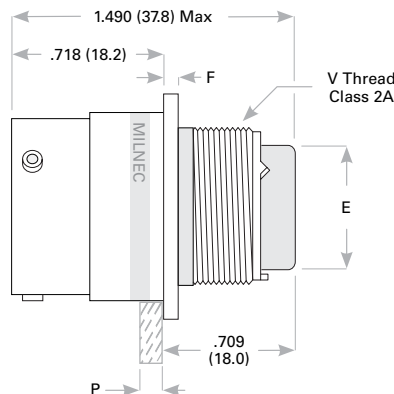
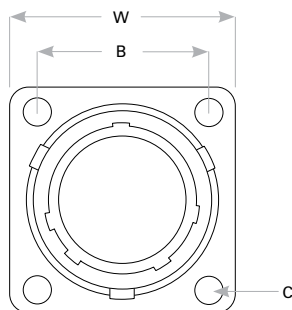
EVBO Cross Reference & Compatibility

Compatible Brands	Equivalent	Mates
MIL-DTL-83723 Series III	M83723/71, M83723/72	M83723/75, M83723/76, M83723/77, M83723/78
Aero / Conesys	AE83371, AE83372	AE83375, AE83376, AE83377, AE83378
Amphenol / Matrix	MB30	MB36, MB38
Deutsch / TE	DL60	DL66

Receptacle Dimensions

Shell Size	W	C	D	E	F	V Thread Class 2A	P Max Rear Panel*	B	X	H Front Mount	N Rear Mount
8	.812 (20.6)	.120 (3.0)	.536 (13.6)	.305 (7.7)	.097 (2.5)	.5000-20 UNF	.234 (5.9)	.594 (15.1)	.125 (3.2)	.510 (13.0)	.620 (15.7)
10	.937 (23.8)	.120 (3.0)	.659 (16.7)	.405 (10.3)	.097 (2.5)	.6250-24 UNEF	.234 (5.9)	.719 (18.3)	.125 (3.2)	.635 (16.1)	.748 (19.0)
12	1.031 (26.2)	.120 (3.0)	.829 (21.1)	.531 (13.5)	.097 (2.5)	.7500-20 UNEF	.234 (5.9)	.812 (20.6)	.125 (3.2)	.760 (19.3)	.913 (23.2)
14	1.125 (28.6)	.120 (3.0)	.898 (22.8)	.665 (16.9)	.097 (2.5)	.8750-20 UNEF	.234 (5.9)	.906 (23.0)	.125 (3.2)	.885 (22.5)	.980 (24.9)
16	1.250 (31.8)	.120 (3.0)	1.025 (26.0)	.790 (20.1)	.097 (2.5)	1.0000-20 UNEF	.234 (5.9)	.969 (24.6)	.125 (3.2)	1.010 (25.7)	1.107 (28.1)
18	1.343 (34.1)	.120 (3.0)	1.131 (28.7)	.869 (22.1)	.097 (2.5)	1.0625-18 UNEF	.234 (5.9)	1.062 (27.0)	.125 (3.2)	1.072 (27.2)	1.209 (30.7)
20	1.437 (36.5)	.120 (3.0)	1.256 (31.9)	.994 (25.2)	.097 (2.5)	1.1875-18 UNEF	.234 (5.9)	1.156 (29.4)	.125 (3.2)	1.197 (30.4)	1.337 (34.0)
22	1.562 (39.7)	.120 (3.0)	1.381 (35.1)	1.119 (28.4)	.128 (3.3)	1.3125-18 UNEF	.234 (5.9)	1.250 (31.8)	.125 (3.2)	1.322 (33.6)	1.452 (36.9)
24	1.703 (43.3)	.149 (3.8)	1.506 (38.3)	1.244 (31.6)	.128 (3.3)	1.4375-18 UNEF	.234 (5.9)	1.375 (34.9)	.154 (3.9)	1.442 (36.6)	1.577 (40.1)

Dimensions are in inches (mm). * Max panel thickness applies only to rear mount applications to ensure proper coupling clearance.



Panel Cutout

Rev. 1427