

90° Strain Relief Backshell

EV Series • MIL-DTL-83723 Series III Type Connectors

EV B4 - S - 16 N

- 1 **BASIC PART NUMBER**
EV B4 90° strain relief backshell
- 2 **COUPLING STYLE**
N Non-self-locking coupling
S Self-locking coupling
- 3 **SHELL SIZE**
See Strain Relief Dimensions table below
- 4 **MATERIAL & FINISH**
N Aluminum, electroless nickel
W Aluminum, olive drab cadmium
B Aluminum, hardcoat anodize



Note: See overview (pp.T-4-T-5) for all connector and accessory options.

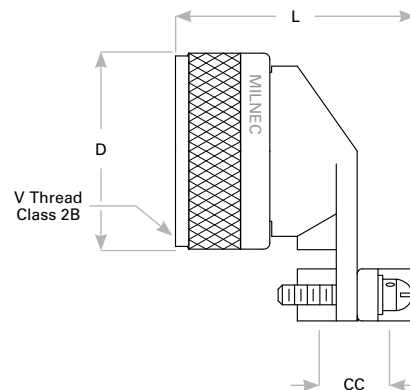
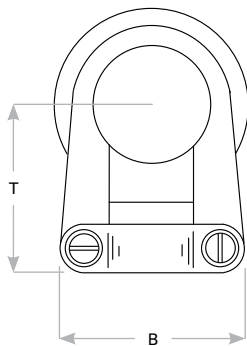
EV B4 Compatibility

Compatible Brands	Connectors
MIL-DTL-83723 Series III	M83723/71, /72, /73, /74, /75, /76, /77, /78, /82, /83, /84, /85, /86, /87, /91, /92, /95, /96
Aero / Conesys	AE83371, 72, 73, 74, 75, 76, 77, 78, 82, 83, 84, 85, 86, 87, 91, 92, 95, 96, 97, 98
Amphenol / Matrix	MB30, MB34, MB36, MB38, MT30, MT34, MT36, MT37, MT38
Deutsch / TE	DL60, DL64, DL66, DBA30, DBA34, DBA36

Strain Relief Dimensions

Shell Size	T	B	V Thread Class 2B	L	D	CC Cable Clearance	
						Min	Max
8	.746 (18.9)	.732 (18.6)	.5000-20 UNF	1.257 (31.9)	.885 (22.5)	.125 (3.2)	.204 (5.2)
10	.805 (20.4)	.812 (20.6)	.6250-24 UNEF	1.339 (34.0)	1.010 (25.7)	.187 (4.7)	.286 (7.3)
12	.867 (22.0)	.968 (24.6)	.7500-20 UNEF	1.532 (38.9)	1.135 (28.8)	.291 (7.4)	.416 (10.6)
14	.930 (23.6)	1.026 (26.1)	.8750-20 UNEF	1.592 (40.4)	1.260 (32.0)	.351 (8.9)	.476 (12.1)
16	.994 (25.2)	1.299 (33.0)	1.0000-20 UNEF	1.741 (44.2)	1.385 (35.2)	.501 (12.7)	.626 (15.9)
18	1.171 (29.7)	1.431 (36.3)	1.0625-18 UNEF	1.853 (47.1)	1.510 (38.4)	.518 (13.2)	.706 (17.9)
20	1.234 (31.2)	1.537 (39.0)	1.1875-18 UNEF	1.978 (50.2)	1.635 (41.5)	.581 (14.8)	.831 (21.1)
22	1.296 (32.9)	1.633 (41.5)	1.3125-18 UNEF	2.108 (53.5)	1.760 (44.7)	.644 (16.4)	.956 (24.3)
24	1.358 (34.5)	1.755 (44.6)	1.4375-18 UNEF	2.228 (56.6)	1.885 (47.9)	.706 (17.9)	1.081 (27.5)

Dimensions are in inches (mm).



Rev. 1427