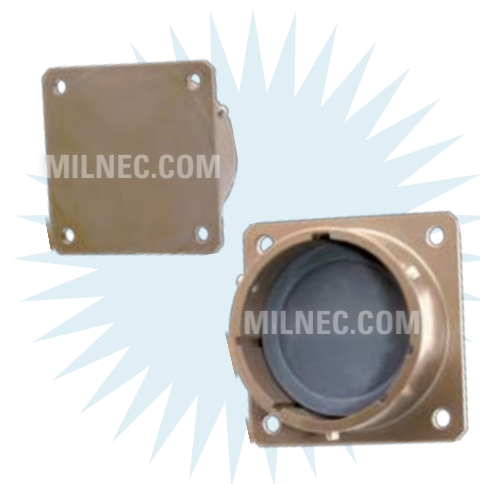


## EVTD - 14 W - 03

- 1 **BASIC PART NUMBER**  
 EVTD Stowage receptacle (threaded coupling)  
 EVBD Stowage receptacle (bayonet coupling)
- 2 **SHELL SIZE**  
 See Stowage Receptacle Dimensions table below
- 3 **MATERIAL & FINISH**  
 N Aluminum, electroless nickel  
 W Aluminum, olive drab cadmium
- 4 **OPTIONAL ACCESSORY KIT (OMIT FOR NONE)**  
 02 Protective cover + mounting gasket  
 03 02 kit + mounting bracket + sealing screws



**Note:** See overview (pp.T-4-T-5) for all connector and accessory options.

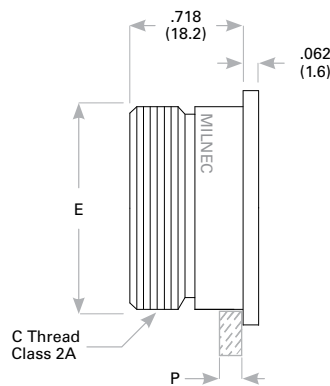
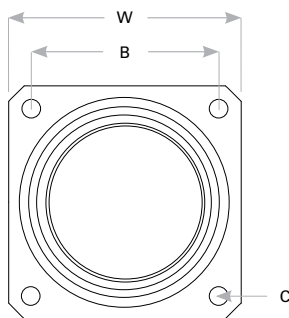
### EVTD & EVBD Compatibility

Compatible Brands	Plugs
<b>MIL-DTL-83723 Series III</b>	M83723/75, M83723/76, M83723/77, M83723/78, M83723/86, M83723/87, M83723/91, M83723/92, M83723/95, M83723/96
<b>Aero / Conesys</b>	AE83375, AE83376, AE83377, AE83378, AE83386, AE83387, AE83391, AE83392, AE83395, AE83396, AE83398
<b>Amphenol / Matrix</b>	MB36, MB38, MT36, MT38
<b>Deutsch / TE</b>	DBA36, DL66

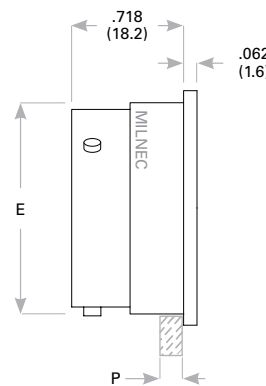
### Stowage Receptacle Dimensions

Shell Size	E	W	C Thread Class 2A	C	B	H Bayonet Rear Mount	X	P Max Rear Panel†
8	.561 (14.2)	.812 (20.6)	.5625-24 UNEF	.125 (3.2)	.594 (15.1)	.620 (15.7)	.125 (3.2)	.234 (5.94)
10	.696 (17.7)	.937 (23.8)	.6875-24 UNEF	.125 (3.2)	.719 (18.3)	.748 (19.0)	.125 (3.2)	.234 (5.94)
12	.875 (22.2)	1.031 (26.2)	.8750-20 UNEF	.125 (3.2)	.812 (20.6)	.913 (23.2)	.125 (3.2)	.234 (5.94)
14	.935 (23.7)	1.125 (28.6)	.9375-20 UNEF	.125 (3.2)	.906 (23.0)	.980 (24.9)	.125 (3.2)	.234 (5.94)
16	1.062 (27.0)	1.250 (31.8)	1.0625-18 UNEF	.125 (3.2)	.969 (24.6)	1.107 (28.1)	.125 (3.2)	.234 (5.94)
18	1.187 (30.1)	1.343 (34.1)	1.1875-18 UNEF	.125 (3.2)	1.062 (27.0)	1.209 (30.7)	.125 (3.2)	.234 (5.94)
20	1.312 (33.3)	1.437 (36.5)	1.3125-18 UNEF	.125 (3.2)	1.156 (29.4)	1.337 (34.0)	.125 (3.2)	.234 (5.94)
22	1.437 (36.5)	1.562 (39.7)	1.4375-18 UNEF	.125 (3.2)	1.250 (31.8)	1.452 (36.9)	.125 (3.2)	.234 (5.94)
24	1.562 (39.7)	1.703 (43.3)	1.5625-18 UNEF	.149 (3.8)	1.375 (34.9)	1.577 (40.1)	.154 (3.9)	.234 (5.94)

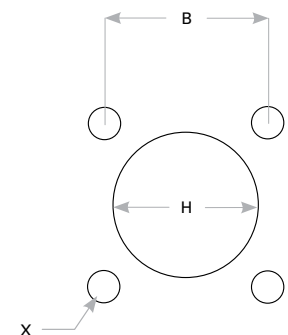
Dimensions are in inches (mm). † Max panel thickness applies only to rear mount applications to ensure proper coupling clearance.



**Threaded Coupling**



**Bayonet Coupling**



**Panel Cutout**

Rev. 1427