

# M85049/120 Type 90° Strain Relief Backshell

Ry85049 Series • M85049 Type Backshells

## RY85049/120 S 16 N

1 2 3 4

### 1 BASIC PART NUMBER

**RY85049/120**

M85049/120 type

90° strain relief backshell

### 2 COUPLING STYLE

**N** Non-detented

**S** Self-locking

(Use dash for non-self-locking)

### 3 DASH NO.

See Dimensions table below

### 4 MATERIAL & FINISH

**A** Aluminum, black anodize

**N** Aluminum, electroless nickel

**S** Stainless steel, passivated

**W** Aluminum, olive drab cadmium

**X** Aluminum, nickel fluorocarbon polymer

**Y** Aluminum, pure dense electrodeposited aluminum

**Z** Aluminum, zinc-nickel



Photo for example only

## RY85049/120 Compatibility

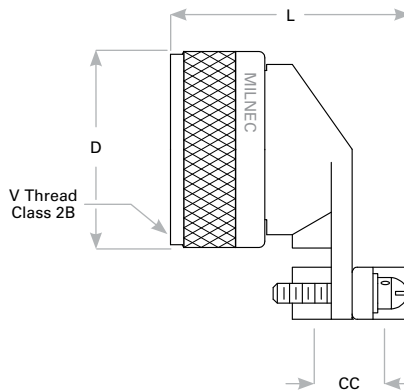
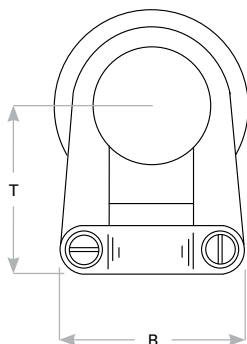
### Compatible Connector Series

AS5015 Series AS34001 Crimp, MIL-DTL-26482 Series II, SAE-AS1703 Crimp Series III, MIL-DTL-83723 Series I & III

## RY85049/120 Dimensions

Dash No.	MIL-DTL-83723 Series III	MIL-DTL-5015 MS3400 Series	AS81703 Series III	MIL-DTL-26482 Series II	V Thread Class 2B	D Max	L	B Max	T Max	CC Min Cable Clearance
03	-	-	3	-	9/16-24 UNEF	0.950 (24.1)	1.29 (32.8)	0.880 (22.4)	0.839 (21.3)	0.220 (5.6)
08	8	8S	-	8	1/2-20 UNF	0.890 (22.6)	1.29 (32.8)	0.880 (22.4)	0.811 (20.6)	0.220 (5.6)
10	10	10S/10SL	-	10	5/8-20 UNEF	1.010 (25.7)	1.38 (35.1)	0.940 (23.9)	0.870 (22.1)	0.270 (6.9)
12	12	12/12S	7	12	3/4-20 UNEF	1.140 (29.0)	1.57 (39.9)	1.120 (28.4)	0.929 (23.6)	0.350 (8.9)
14	14	14/14S	12	14	7/8-20 UNEF	1.260 (32.0)	1.63 (41.4)	1.190 (30.3)	1.000 (25.4)	0.470 (11.9)
16	16	16/16S	19	16	1-20 UNEF	1.390 (35.3)	1.78 (45.2)	1.440 (36.6)	1.059 (26.9)	0.550 (14.0)
18	18	18	27	18	1 1/16-18 UNEF	1.510 (38.4)	1.89 (48.0)	1.560 (39.6)	1.228 (31.2)	0.620 (15.7)
20	20	20	37	20	1 3/16-18 UNEF	1.640 (41.7)	2.01 (51.1)	1.690 (42.9)	1.299 (33.0)	0.700 (17.8)
22	22	22	-	24	1 5/16-18 UNEF	1.176 (44.7)	2.14 (54.4)	1.750 (44.5)	1.358 (34.5)	0.780 (19.8)
24	24	24	-	-	1 7/16-18 UNEF	1.890 (48.0)	2.26 (57.4)	1.880 (47.8)	1.421 (36.1)	0.850 (21.6)
28	-	28	-	-	1 3/4-18 UNS	2.140 (54.4)	2.72 (69.1)	2.120 (53.8)	1.630 (41.4)	0.950 (24.1)
32	-	32	-	-	2-18 UNS	2.400 (61.0)	2.79 (70.9)	2.500 (63.5)	1.858 (47.2)	1.020 (25.2)
36	-	36	-	-	2 1/4-16 UN	2.640 (67.1)	3.91 (73.9)	2.620 (66.5)	1.980 (50.3)	1.190 (30.2)
40	-	40	-	-	2 1/2-16 UN	2.890 (73.4)	3.04 (77.2)	2.680 (68.1)	2.098 (53.3)	1.220 (31.0)
44	-	44	-	-	2 3/4-16 UN	3.140 (79.8)	3.29 (83.6)	3.000 (76.2)	2.358 (59.9)	1.500 (38.1)
48	-	48	-	-	3-16 UN	3.390 (86.1)	3.41 (86.6)	3.500 (88.9)	2.480 (63.0)	1.630 (41.4)
61	-	-	61	-	1 1/2-18 UNEF	1.950 (49.5)	2.26 (57.4)	1.880 (47.8)	1.449 (36.8)	0.850 (21.6)

Dimensions are in inches (mm).



Rev. 1825