

M85049/39 Type 90° Strain Relief Backshell

Ry85049 Series • M85049 Type Backshells

RY85049/39 S 15 N

- 1 **BASIC PART NUMBER**
RY85049/39
M85049/39 type
90° strain relief backshell
(Supersedes MIL-C-85049/39)
- 2 **COUPLING STYLE**
N Non-detented
S Self-locking
(Use dash for non-self-locking)
- 3 **SHELL SIZE**
See Dimensions table below
- 4 **MATERIAL & FINISH**

- A Aluminum, black anodize
- N Aluminum, electroless nickel
- S Stainless steel, passivated
- W Aluminum, olive drab cadmium



Photo for example only

RY85049/39 Compatibility

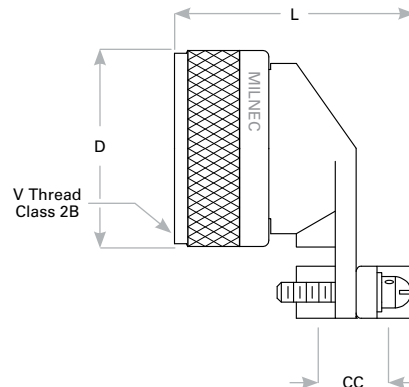
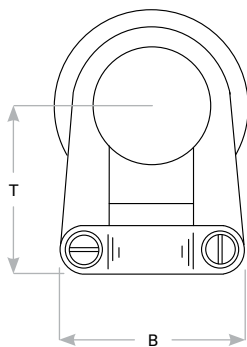
Compatible Connector Series

MIL-DTL-38999 Series III & IV
EN3645

RY85049/39 Dimensions

Shell Size	Shell Size Ref	V Thread Class 2B	D Self-Locking Only	B Max	L Max	T Max	CC Cable Clearance	
							Min	Max
9	A	M12 X 1 - 6H	0.858 (21.8)	0.850 (21.6)	1.200 (30.5)	1.000 (25.4)	0.098 (2.5)	0.234 (5.9)
11	B	M15 X 1 - 6H	0.984 (25.0)	0.900 (22.9)	1.200 (30.5)	1.100 (27.9)	0.153 (3.9)	0.234 (5.9)
13	C	M18 X 1 - 6H	1.157 (29.4)	1.100 (27.9)	1.400 (35.6)	1.100 (27.9)	0.190 (4.8)	0.328 (8.3)
15	D	M22 X 1 - 6H	1.279 (32.5)	1.150 (29.2)	1.450 (36.8)	1.250 (31.8)	0.260 (6.6)	0.457 (11.6)
17	E	M25 X 1 - 6H	1.406 (35.7)	1.300 (33.0)	1.600 (40.6)	1.300 (33.0)	0.283 (7.2)	0.614 (15.6)
19	F	M28 X 1 - 6H	1.516 (38.5)	1.500 (38.1)	1.700 (43.2)	1.350 (34.3)	0.325 (8.3)	0.634 (16.1)
21	G	M31 X 1 - 6H	1.642 (41.7)	1.600 (40.6)	1.850 (47.0)	1.600 (40.6)	0.343 (8.7)	0.698 (17.7)
23	H	M34 X 1 - 6H	1.768 (44.9)	1.700 (43.2)	1.950 (49.5)	1.750 (44.5)	0.381 (9.7)	0.823 (20.9)
25	J	M37 X 1 - 6H	1.889 (48.0)	1.800 (45.7)	2.100 (53.3)	1.850 (47.0)	0.418 (10.6)	0.853 (21.7)

Dimensions are in inches (mm).



Rev. 1825