

# M85049/51 Type 90° Strain Relief Backshell

Ry85049 Series • M85049 Type Backshells



Photo for example only

## Ry85049/51 Compatibility

### Compatible Connector Series

AS50151 Series AS34001 Crimp, MIL-DTL-26482 Series II, SAE-AS1703 Crimp Series III, MIL-DTL-83723 Series I & III

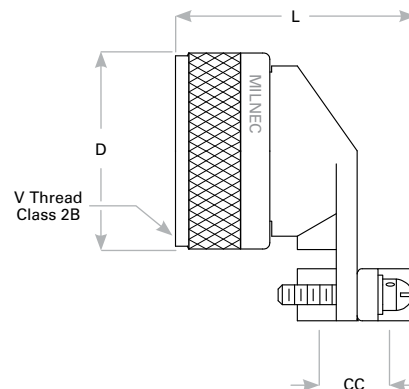
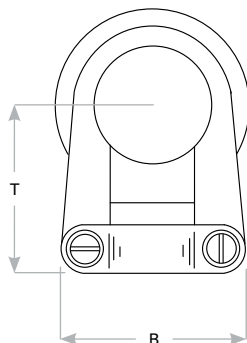
## Ry85049/51 S 12 N

- 1 **BASIC PART NUMBER**  
**RY85049/51**  
 M85049/51 type  
 90° strain relief backshell  
 (Supersedes MS3418)
- 2 **COUPLING STYLE**  
**N** Non-detented  
**S** Self-locking  
**-1** Non-self-locking
- 3 **DASH NO.**  
 See Dimensions table below
- 4 **MATERIAL & FINISH**  
**A** Aluminum, black anodize  
**N** Aluminum, electroless nickel  
**S** Stainless steel, passivated  
**W** Aluminum, olive drab cadmium

## Ry85049/51 Dimensions

Dash No.	D Max Self-Locking Only	L Max	V Thread Class 2B	T	B	CC Cable Clearance	
						Min	Max
3 *†	—	—	0.562 - 24 UNEF	0.777 (19.7)	0.732 (18.6)	0.125 (3.2)	0.204 (5.2)
8	0.885 (22.5)	1.257 (31.9)	0.500 - 20 UNF	0.746 (18.9)	0.732 (18.6)	0.125 (3.2)	0.204 (5.2)
10	1.010 (25.7)	1.339 (34.0)	0.625 - 24 UNEF	0.805 (20.4)	0.812 (20.6)	0.187 (4.7)	0.286 (7.3)
12	1.135 (28.8)	1.532 (38.9)	0.750 - 20 UNEF	0.867 (22.0)	0.968 (24.6)	0.291 (7.4)	0.416 (10.6)
14	1.260 (32.0)	1.592 (40.4)	0.875 - 20 UNEF	0.930 (23.6)	1.026 (26.1)	0.351 (8.9)	0.476 (12.1)
16	1.385 (35.2)	1.741 (44.2)	1.000 - 20 UNEF	0.994 (25.2)	1.299 (33.0)	0.501 (12.7)	0.626 (15.9)
18	1.510 (38.4)	1.853 (47.1)	1.062 - 18 UNEF	1.171 (29.7)	1.431 (36.3)	0.518 (13.2)	0.706 (17.9)
20	1.635 (41.5)	1.978 (50.2)	1.188 - 18 UNEF	1.234 (31.2)	1.537 (39.0)	0.581 (14.8)	0.831 (21.1)
22	1.760 (44.7)	2.108 (53.5)	1.313 - 18 UNEF	1.296 (32.9)	1.633 (41.5)	0.644 (16.4)	0.956 (24.3)
24	1.885 (47.9)	2.228 (56.6)	1.438 - 18 UNEF	1.358 (34.5)	1.755 (44.6)	0.706 (17.9)	1.081 (27.5)
28 *	2.135 (54.2)	2.528 (64.2)	1.750 - 18 UNS	1.572 (39.9)	2.000 (50.8)	0.750 (19.1)	1.187 (30.1)
32 *	2.395 (60.8)	2.591 (65.8)	2.000 - 18 UNS	1.797 (45.6)	2.366 (60.1)	0.875 (22.2)	1.250 (31.8)
36 *	2.635 (66.9)	2.716 (69.0)	2.250 - 16 UN	1.922 (48.8)	2.476 (62.9)	0.938 (23.8)	1.375 (34.9)
40 *	2.885 (73.3)	2.841 (72.2)	2.500 - 16 UN	2.047 (52.0)	2.546 (64.7)	0.938 (23.8)	1.500 (38.1)
44 *	3.135 (79.6)	3.091 (78.5)	2.750 - 16 UN	2.296 (58.3)	2.840 (72.1)	1.188 (30.2)	1.750 (44.5)
48 *	3.385 (86.0)	3.210 (81.5)	3.000 - 16 UN	2.421 (61.5)	3.324 (84.4)	1.312 (33.3)	1.875 (47.6)
61 *†	—	—	1.500 - 18 UNEF	1.388 (35.3)	1.755 (44.6)	0.706 (17.9)	1.081 (27.5)

Dimensions are in inches (mm). \* Not available under M8372315S. † Not available in self-locking



Rev. 1825