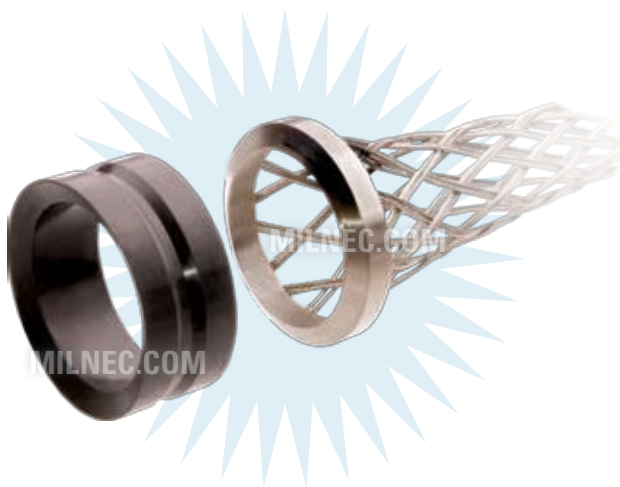


Cable Grip & Sealing Gland

LM Series • MIL-DTL-22992 Type Power Connectors



Cable Grip & Sealing Glands

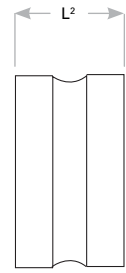
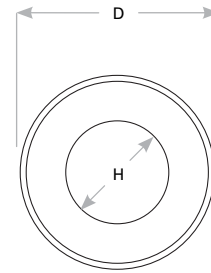
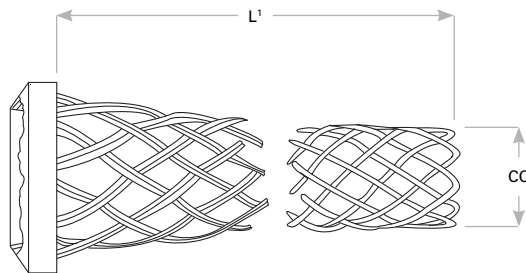
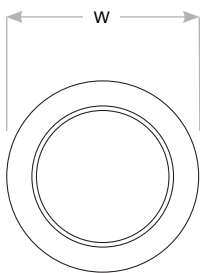
Replacement wire mesh grips are designed to prevent strain from being transmitted to cables. Stainless steel wire and multi-weave grip design provides arc-of-bend control, minimizing cable damage and extending cable life for critical military and heavy duty applications where cable is subjected to vibration and harsh environments. Cable grips are individually matched with appropriate cable glands for each insert pattern based on the recommended IPCEA round cable and per MIL-DTL-3432 cable specifications referenced on the Insert Arrangement selection charts on pages P-8 and P-9.

Cable Grip & Sealing Glands

Cable Grip Part Number	Sealing Gland Part Number	Insert Arrangement	Cable Grip				Sealing Gland			
			CC Dia Cable Clearance		W	L ¹	D	H	L ²	Min Cable Clearance
			Min	Max						
LMWG-12	LMSG-12	28-12	.891 (22.6)	1.047 (26.6)	1.797 (45.6)	8.000 (203.2)	1.805 (45.8)	1.047 (26.6)	1.034 (26.3)	.922 (23.4)
LMWG-2	LMSG-2	28-13	1.003 (25.5)	1.145 (29.1)	1.797 (45.6)	8.000 (203.2)	1.805 (45.9)	1.130 (28.7)	1.034 (26.3)	1.005 (25.5)
LMWG-1	LMSG-1	32-04	.832 (21.1)	.969 (24.6)	1.797 (45.6)	8.000 (203.2)	1.805 (45.8)	.969 (24.6)	1.034 (26.3)	.844 (21.4)
LMWG-2	LMSG-2	32-05	1.003 (25.5)	1.145 (29.1)	1.797 (45.6)	8.000 (203.2)	1.805 (45.9)	1.130 (28.7)	1.034 (26.3)	1.005 (25.5)
LMWG-2	LMSG-2	32-12	1.003 (25.5)	1.145 (29.1)	1.797 (45.6)	8.000 (203.2)	1.805 (45.9)	1.130 (28.7)	1.034 (26.3)	1.005 (25.5)
LMWG-13	LMSG-13	32-13	1.185 (30.1)	1.342 (34.1)	1.797 (45.6)	9.500 (241.3)	1.805 (45.9)	1.342 (34.1)	1.034 (26.3)	1.217 (30.9)
LMWG-5	LMSG-5	44-02	1.156 (29.4)	1.312 (33.3)	2.235 (56.8)	11.500 (292.1)	2.242 (57.0)	1.312 (33.3)	1.160 (29.5)	1.187 (30.1)
LMWG-14	LMSG-14	44-03	1.282 (32.6)	1.438 (36.5)	2.235 (56.8)	10.500 (266.7)	2.242 (57.0)	1.438 (36.5)	1.160 (29.5)	1.313 (33.4)
LMWG-15	LMSG-15	44-12	1.360 (34.5)	1.516 (38.5)	2.235 (56.8)	11.500 (292.1)	2.242 (57.0)	1.516 (38.5)	1.160 (29.5)	1.391 (35.3)
LMWG-16	LMSG-16	44-13	1.531 (38.9)	1.688 (42.9)	2.235 (56.8)	13.500 (342.9)	2.242 (57.0)	1.627 (41.3)	1.160 (29.5)	1.547 (39.3)
LMWG-19	LMSG-20	44-51	1.550 (39.4)	1.750 (44.5)	2.235 (56.8)	12.500 (317.5)	2.242 (57.0)	1.734 (44.0)	1.160 (29.5)	1.609 (40.9)
LMWG-20	LMSG-21	44-52	1.375 (34.9)	1.578 (40.1)	2.235 (56.8)	12.000 (304.8)	2.242 (57.0)	1.562 (39.7)	1.160 (29.5)	1.437 (36.5)
LMWG-21	LMSG-22	44-56	1.010 (25.7)	1.160 (29.5)	2.235 (56.8)	8.000 (203.2)	2.242 (57.0)	1.150 (29.2)	1.160 (29.5)	1.025 (26.0)
LMWG-17	LMSG-18	52-12	2.039 (51.8)	2.328 (59.1)	2.922 (74.2)	18.000 (457.2)	2.927 (74.4)	2.328 (59.1)	1.284 (32.6)	2.183 (55.5)
LMWG-18	LMSG-19	52-13	2.211 (56.2)	2.500 (63.5)	2.235 (56.8)	19.000 (482.6)	2.927 (74.4)	2.453 (62.3)	1.284 (32.6)	2.308 (58.6)

Dimensions are in inches (mm).

Note: 44-50 insert arrangement is only available in LM00 and LM09.



Cable Strain Relief

Cable Sealing Gland