

Thru-Bulkhead Receptacle

HM Series • MIL-DTL-26482 Series 1 Type Connectors



HM22 F 14-18 PS N - 02

- 1 **BASIC PART NUMBER**
HM22 Thru-bulkhead receptacle
- 2 **MATERIAL & FINISH**
F Aluminum, olive drab cadmium
- 3 **SHELL SIZE & INSERT ARRANGEMENT**
See Insert Arrangement Selection table, p. H-9
- 4 **CONTACT STYLE**
PS Pin / socket (non-configurable)
- 5 **INSERT ROTATION**
N Normal or W, X, Y, Z, see p. H-9 for availability
- 6 **OPTIONAL ACCESSORY KIT (OMIT FOR NONE)**
02 Protective covers (2x) + mounting gasket
03 02 kit + mounting bracket + sealing screws

HM22 Compatibility

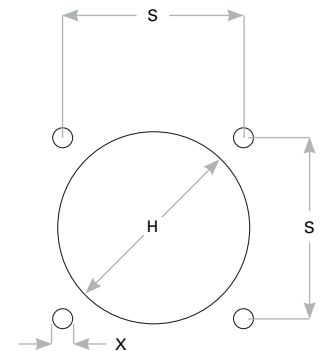
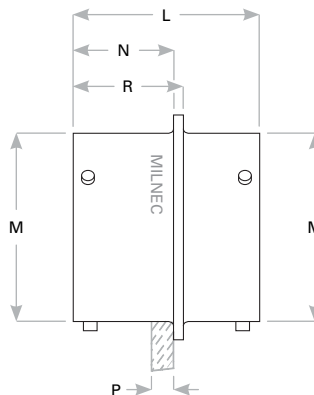
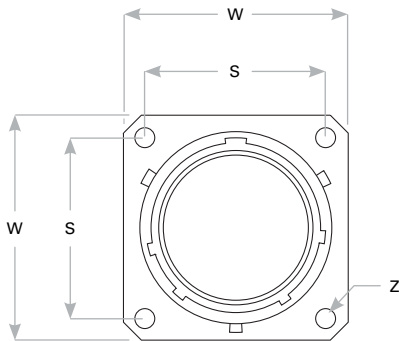
Compatible Brands	Mates
MIL-DTL-26482 Series 1	MS3116
Amphenol	PT06, PT08
Array	PW06, PW08
ITT Cannon	KPT06, KPT08
Souriau	85106, 85108

Note: See part builder (p. H-8) for additional kit options.

Receptacle Dimensions

Shell Size	W	Z	L	R	N	M	P Max Rear Panel*	S	X	H
8	.812 (20.6)	.120 (3.0)	1.050 (26.7)	.625 (15.9)	.562 (14.3)	.473 (12.0)	.215 (5.4)	.594 (15.1)	.120 (3.1)	.533 (13.5)
10	.938 (23.8)	.120 (3.0)	1.050 (26.7)	.625 (15.9)	.562 (14.3)	.590 (15.0)	.215 (5.4)	.719 (18.3)	.120 (3.1)	.650 (16.5)
12	1.031 (26.2)	.120 (3.0)	1.050 (26.7)	.625 (15.9)	.562 (14.3)	.750 (19.1)	.215 (5.4)	.812 (20.6)	.120 (3.1)	.810 (20.6)
14	1.125 (28.6)	.120 (3.0)	1.050 (26.7)	.625 (15.9)	.562 (14.3)	.875 (22.2)	.215 (5.4)	.906 (23.0)	.120 (3.1)	.935 (23.8)
16	1.219 (31.0)	.120 (3.0)	1.050 (26.7)	.625 (15.9)	.562 (14.3)	1.000 (25.4)	.215 (5.4)	.969 (24.6)	.120 (3.1)	1.060 (26.9)
18	1.312 (33.3)	.120 (3.0)	1.050 (26.7)	.625 (15.9)	.562 (14.3)	1.125 (28.6)	.215 (5.4)	1.062 (27.0)	.120 (3.1)	1.185 (30.1)
20	1.438 (36.5)	.120 (3.0)	1.330 (33.8)	.781 (19.8)	.688 (17.5)	1.250 (31.8)	.340 (8.6)	1.156 (29.4)	.120 (3.1)	1.310 (33.3)
22	1.562 (39.7)	.120 (3.0)	1.330 (33.8)	.781 (19.8)	.688 (17.5)	1.375 (34.9)	.340 (8.6)	1.250 (31.8)	.120 (3.1)	1.435 (36.5)
24	1.688 (42.9)	.147 (3.7)	1.330 (33.8)	.781 (19.8)	.688 (17.5)	1.500 (38.1)	.310 (7.8)	1.375 (34.9)	.147 (3.7)	1.560 (39.6)

Dimensions are in inches (mm). * Max panel thickness applies only to rear mount applications to ensure proper coupling clearance.



Panel Cutout