

HM08 F 14-19 P N - 01

- 1 **BASIC PART NUMBER**
HM08 90° plug w/ integrated backshell
- 2 **MATERIAL & FINISH**
F Aluminum, olive drab cadmium
- 3 **SHELL SIZE & INSERT ARRANGEMENT**
See Insert Arrangement Selection table, p. H-9
- 4 **CONTACT STYLE**
P Pin
S Socket
- 5 **INSERT ROTATION**
N Normal or W, X, Y, Z, see p. H-9 for availability
- 6 **OPTIONAL ACCESSORY KIT (OMIT FOR NONE)**
01 Protective cover



HM08 Cross Reference & Compatibility

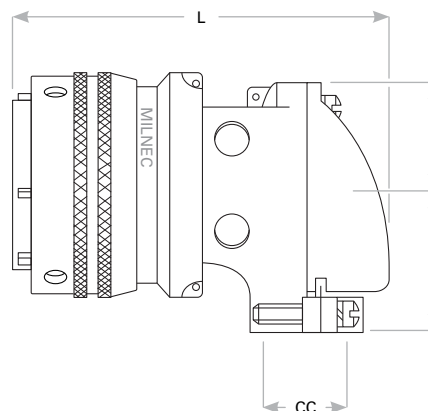
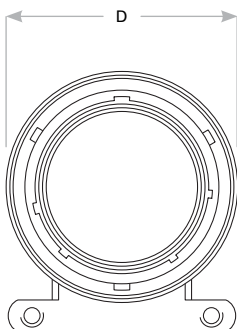
Compatible Brands	Equivalent	Mates
MIL-DTL-26482 Series 1	—	MS3110, MS3111, MS3112, MS3114
Amphenol	PT08	PT00, PT01, PT02, PT07
Array	PW08	PW00, PW01, PW02, PW07
ITT Cannon	KPT08	KPT00, KPT01, KPT02, KPT07
Souriau	85108	85100, 85101, 85102, 85107

Note: See part builder (p. H-8) for additional kit options.

Plug Dimensions

Shell Size	D	L	K	T	CC Cable Clearance
8	.796 (20.2)	1.786 (45.4)	.339 (8.6)	.655 (16.6)	.169 (4.3)
10	.921 (23.4)	1.880 (47.8)	.393 (10.0)	.749 (19.0)	.170 (4.3)
12	1.046 (26.6)	1.965 (49.9)	.450 (11.4)	.812 (20.6)	.264 (6.7)
14	1.171 (29.7)	2.113 (53.7)	.519 (13.2)	.905 (23.0)	.310 (7.9)
16	1.297 (32.9)	2.315 (58.8)	.583 (14.8)	1.030 (26.2)	.330 (8.4)
18	1.422 (36.1)	2.423 (61.5)	.621 (15.8)	1.015 (25.8)	.444 (11.3)
20	1.562 (39.7)	2.695 (68.4)	.683 (17.3)	1.077 (27.4)	.510 (13.0)
22	1.672 (42.5)	2.742 (69.6)	.739 (18.8)	1.139 (28.9)	.515 (13.1)
24	1.797 (45.6)	2.980 (75.7)	.797 (20.2)	1.265 (32.1)	.656 (16.7)

Dimensions are in inches (mm).



Rev. 1301.1