

Thru-Bulkhead Receptacle

BM Series • MIL-DTL-26482 Series 2 Type Connectors



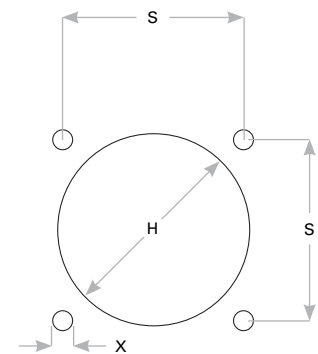
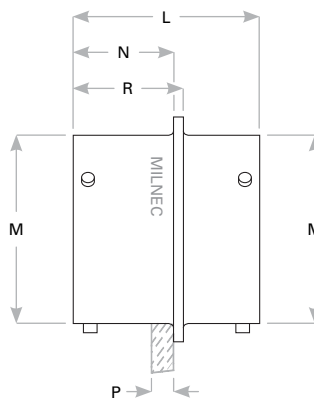
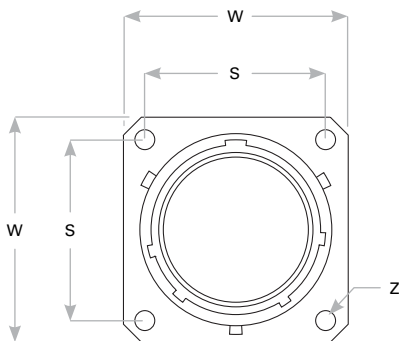
BM22 Compatibility

Compatible Brands	Mates
MIL-DTL-26482 Series 2	MS3475, MS3476
Aero / Conesys	AE775, AE776
Amphenol / Matrix	MB16, MB18
Deutsch	AFD56, AFD57
Souriau	8526-5, 8526-6

Receptacle Dimensions

Shell Size	W	Z	L Max	R	N	M	P Max Rear Panel*	S	X	H
8	.812 (20.6)	.120 (3.0)	1.050 (26.7)	.625 (15.9)	.562 (14.3)	.473 (12.0)	.215 (5.4)	.594 (15.1)	.120 (3.1)	.508 (12.9)
10	.938 (23.8)	.120 (3.0)	1.050 (26.7)	.625 (15.9)	.562 (14.3)	.590 (15.0)	.215 (5.4)	.719 (18.3)	.120 (3.1)	.634 (16.1)
12	1.031 (26.2)	.120 (3.0)	1.050 (26.7)	.625 (15.9)	.562 (14.3)	.750 (19.1)	.215 (5.4)	.812 (20.6)	.120 (3.1)	.760 (19.3)
14	1.125 (28.6)	.120 (3.0)	1.050 (26.7)	.625 (15.9)	.562 (14.3)	.875 (22.2)	.215 (5.4)	.906 (23.0)	.120 (3.1)	.882 (22.4)
16	1.219 (31.0)	.120 (3.0)	1.050 (26.7)	.625 (15.9)	.562 (14.3)	1.000 (25.4)	.215 (5.4)	.969 (24.6)	.120 (3.1)	1.008 (25.6)
18	1.312 (33.3)	.120 (3.0)	1.050 (26.7)	.625 (15.9)	.562 (14.3)	1.125 (28.6)	.215 (5.4)	1.062 (27.0)	.120 (3.1)	1.134 (28.8)
20	1.438 (36.5)	.120 (3.0)	1.330 (33.8)	.781 (19.8)	.688 (17.5)	1.250 (31.8)	.340 (8.6)	1.156 (29.4)	.120 (3.1)	1.260 (32.0)
22	1.562 (39.7)	.120 (3.0)	1.330 (33.8)	.781 (19.8)	.688 (17.5)	1.375 (34.9)	.340 (8.6)	1.250 (31.8)	.120 (3.1)	1.382 (35.1)
24	1.688 (42.9)	.147 (3.7)	1.330 (33.8)	.781 (19.8)	.688 (17.5)	1.500 (38.1)	.310 (7.8)	1.375 (34.9)	.147 (3.7)	1.508 (38.3)

Dimensions are in inches (mm). * Max panel thickness applies only to rear mount applications to ensure proper coupling clearance.



Panel Cutout

BM22 W 14-19 PS N - 03

- 1 **BASIC PART NUMBER**
BM22 Thru-bulkhead receptacle
- 2 **MATERIAL & FINISH**
N Aluminum, electroless nickel
W Aluminum, olive drab cadmium
- 3 **SHELL SIZE & INSERT ARRANGEMENT**
See Insert Arrangement Selection table, p. J-12
- 4 **CONTACT STYLE**
PS Pin / socket (non-configurable), gold plated
- 5 **INSERT ROTATION**
N Normal or W, X, Y, Z, see p. J-12 for availability
- 6 **OPTIONAL ACCESSORY KIT (OMIT FOR NONE)**
02 Protective covers (2x) + mounting gasket
03 02 kit + mounting bracket + sealing screws

Note: See part builder (p. J-11) for additional kit options.