

Straight Shrink Boot

BM Series • MIL-DTL-26482 Series 2 Type Connectors



BMK2 - 4 - 100

- 1 **BASIC PART NUMBER**
BMK2 Straight shrink boot
- 2 **BOOT SIZE**
See Boot Dimensions table below
- 3 **MATERIAL**

- 100** Halogen-free, semi-flexible elastomer pre-coated with hot-melt adhesive. Material has excellent fire-safety characteristics and is especially suited where people are confined in enclosed spaces (mass transit, aviation, vehicles, offshore, etc).
- Temp: -22° to +302°F (-30° to +150°C)
 - Low-smoke index as defined by NES 711
 - Low-toxicity index as defined by NES 713
 - High-temp index as defined by NES 715

* Please consult an authorized distributor for other high-temperature materials and adhesive options.

Environmental protection, low-profile design

A shrink boot provides complete IP67 environmental protection and strain relief. Must be used with a boot adapter.

Boot Size Recommendations

Boot Size	Cable Range		Shell Size									
	Min	Max	8	10	12	14	16	18	20	22	24	
2	.220 (5.6)	.550 (14.0)	✓ *	✓ *	✓ *							
3	.230 (5.9)	.590 (15.0)				✓ *	✓ *					
4	.280 (7.1)	.710 (18.0)							*	*		
5	.330 (8.4)	.830 (21.0)						✓	✓		*	*
6	.390 (9.9)	.980 (25.0)								✓		✓
7	.620 (15.7)	1.540 (39.0)										
8	.660 (16.8)	1.650 (42.0)										

Dimensions are in inches (mm). ✓ Recommended boot size for (BMAB) Shrink Boot Adapter, p. J-45.

* Recommended boot size for (BMD2, BMD3, BMD4) EMI/RFI Shrink Boot Adapter, p. J-46.

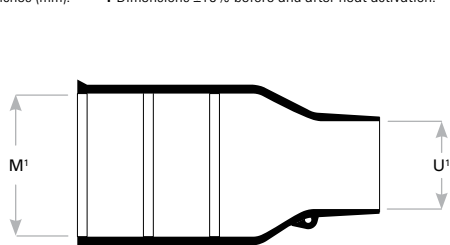
Boot Dimensions

Boot Size	M ¹	U ¹	M ²	U ²	L ¹	R ¹	T ¹	W ¹	FF ¹
2	.940 (24.0)	.550 (14.0)	.410 (10.4)	.220 (5.6)	1.500 (38.0)	.830 (21.0)	.330 (8.5)	.470 (12.0)	.060 (1.6)
3	1.180 (30.0)	.590 (15.0)	.560 (14.2)	.230 (5.9)	2.170 (55.0)	1.260 (32.0)	.450 (11.5)	.470 (12.0)	.070 (1.8)
4	1.220 (31.0)	.710 (18.0)	.710 (18.0)	.280 (7.1)	2.640 (67.0)	1.380 (35.0)	.670 (17.0)	.790 (20.0)	.070 (1.8)
5	1.420 (36.0)	.830 (21.0)	.880 (22.4)	.330 (8.4)	3.150 (80.0)	1.650 (42.0)	.760 (19.5)	.790 (20.0)	.080 (2.0)
6	1.690 (43.0)	.980 (25.0)	1.110 (28.2)	.390 (9.9)	3.900 (99.0)	2.400 (61.0)	.820 (21.0)	.790 (20.0)	.090 (2.2)
7	2.050 (52.0)	1.540 (39.0)	1.380 (35.1)	.620 (15.7)	5.120 (130.0)	2.830 (72.0)	1.530 (39.0)	.790 (20.0)	.130 (3.2)
8	2.600 (66.0)	1.650 (42.0)	1.750 (44.5)	.660 (16.8)	6.690 (170.0)	3.540 (90.0)	2.020 (51.5)	.790 (20.0)	.150 (3.8)

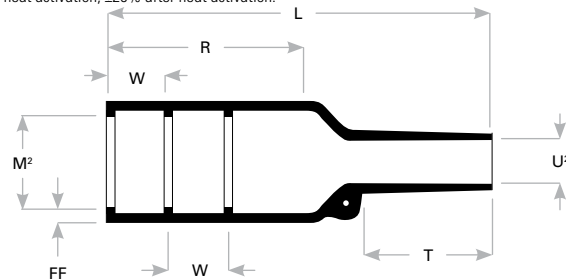
Dimensions are in inches (mm).

† Dimensions ±10% before and after heat activation.

* Dimensions ±10% before heat activation, ±20% after heat activation.



Before Heat Activation



After Heat Activation

Rev. 1718