

MS3470 Connector Type Datasheet

BM Series • MIL-DTL-26482 Series 2 Type Connectors

BM00 N 14-18 S N - R2(017) - 03

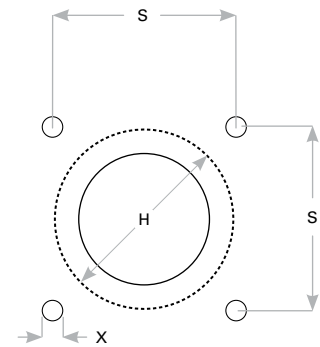
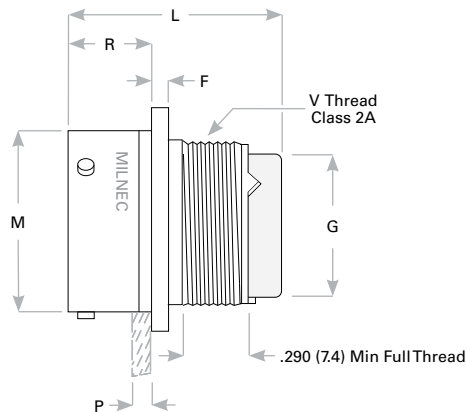
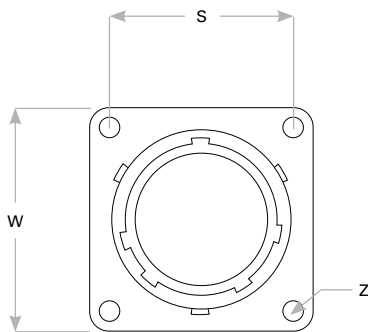
- 1 **BASIC PART NUMBER**
BM00 Wall mount receptacle
- 2 **MATERIAL & FINISH**
N Aluminum, electroless nickel
W Aluminum, olive drab cadmium
- 3 **SHELL SIZE & INSERT ARRANGEMENT**
See Insert Arrangement Selection table, p. J-12
- 4 **CONTACT STYLE**
P Pin
S Socket
- 5 **INSERT ROTATION**
N Normal or W, X, Y, Z, see p. J-12 for availability
- 6 **OPTIONAL BACKSHELL KIT (OMIT FOR NONE)**
B2 Straight strain relief (self-locking), p. J-23
R2() Straight EMI/RFI environmental, p. J-34
(Add dash number for appropriate shell size, see p. J-34)
- 7 **OPTIONAL ACCESSORY KIT (OMIT FOR NONE)**
02 Protective cover + mounting gasket
03 02 kit + mounting bracket + sealing screws

Note: See part builder (p. J-11) for additional kit options.

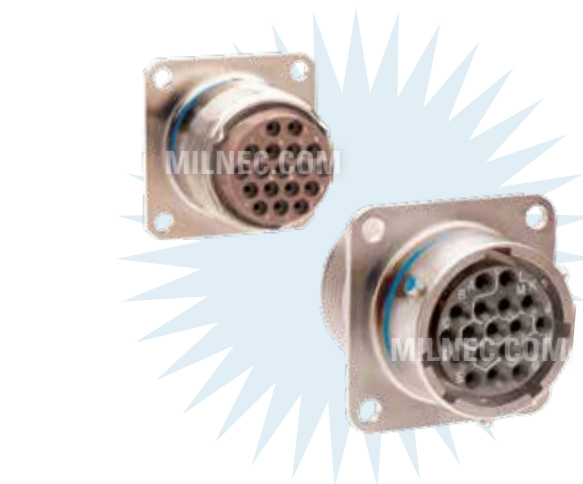
Receptacle Dimensions

| Shell Size | W | Z | R | F | M | L Max | G | V Thread Class 2A | P Max Rear Panel† | S | X | H |
|------------|--------------|------------|-------------|------------|--------------|--------------|--------------|-------------------|-------------------|--------------|------------|--------------|
| 8 | .828 (21.0) | .120 (3.0) | .462 (11.7) | .062 (1.6) | .471 (12.0) | 1.405 (35.7) | .305 (7.7) | .500-20 UNF | .087 (2.2) | .594 (15.1) | .125 (3.1) | .568 (14.4) |
| 10 | .954 (24.2) | .120 (3.0) | .462 (11.7) | .062 (1.6) | .588 (14.9) | 1.405 (35.7) | .405 (10.3) | .625-24 UNEF | .087 (2.2) | .719 (18.3) | .125 (3.1) | .685 (17.4) |
| 12 | 1.047 (26.6) | .120 (3.0) | .462 (11.7) | .062 (1.6) | .748 (19.0) | 1.405 (35.7) | .531 (13.5) | .750-20 UNEF | .087 (2.2) | .812 (20.6) | .125 (3.1) | .864 (22.0) |
| 14 | 1.141 (29.0) | .120 (3.0) | .462 (11.7) | .062 (1.6) | .873 (22.2) | 1.405 (35.7) | .665 (16.9) | .875-20 UNEF | .087 (2.2) | .906 (23.0) | .125 (3.1) | .990 (25.2) |
| 16 | 1.234 (31.3) | .120 (3.0) | .462 (11.7) | .062 (1.6) | .998 (25.3) | 1.405 (35.7) | .790 (20.1) | 1.000-20 UNEF | .087 (2.2) | .969 (24.6) | .125 (3.1) | 1.113 (28.3) |
| 18 | 1.328 (33.7) | .120 (3.0) | .462 (11.7) | .062 (1.6) | 1.123 (28.5) | 1.405 (35.7) | .869 (22.1) | 1.062-18 UNEF | .087 (2.2) | 1.062 (27.0) | .125 (3.1) | 1.240 (31.5) |
| 20 | 1.453 (36.9) | .120 (3.0) | .587 (14.9) | .094 (2.4) | 1.248 (31.7) | 1.465 (37.2) | .994 (25.2) | 1.188-18 UNEF | .212 (5.4) | 1.156 (29.4) | .125 (3.1) | 1.363 (34.6) |
| 22 | 1.578 (40.1) | .120 (3.0) | .587 (14.9) | .094 (2.4) | 1.373 (34.9) | 1.465 (37.2) | 1.119 (28.4) | 1.313-18 UNEF | .212 (5.4) | 1.250 (31.8) | .125 (3.1) | 1.490 (37.9) |
| 24 | 1.703 (43.3) | .147 (3.7) | .620 (15.7) | .094 (2.4) | 1.498 (38.0) | 1.465 (37.2) | 1.244 (31.6) | 1.438-18 UNEF | .212 (5.4) | 1.375 (34.9) | .155 (4.0) | 1.616 (41.1) |

Dimensions are in inches (mm). † Max panel thickness applies only to rear mount applications to ensure proper coupling clearance.



Panel Cutout



BM00 Cross Reference & Compatibility

| Compatible Brands | Equivalent | Mates |
|------------------------|------------|----------------|
| MIL-DTL-26482 Series 2 | MS3470 | MS3475, MS3476 |
| Aero / Conesys | AE770 | AE775, AE776 |
| Amphenol / Matrix | MB10 | MB16, MB18 |
| Deutsch | AFD50 | AFD56, AFD57 |
| Souriau | 8526-0 | 8526-5, 8526-6 |