

# MS3471 Connector Type Datasheet

BM Series • MIL-DTL-26482 Series 2 Type Connectors

## BM01 N 14-18 S N - R2(017) - 02

- 1 **BASIC PART NUMBER**  
BM01 Cable mount receptacle
- 2 **MATERIAL & FINISH**  
N Aluminum, electroless nickel  
W Aluminum, olive drab cadmium
- 3 **SHELL SIZE & INSERT ARRANGEMENT**  
See Insert Arrangement Selection table, p. J-12
- 4 **CONTACT STYLE**  
P Pin  
S Socket
- 5 **INSERT ROTATION**  
N Normal or W, X, Y, Z, see p. J-12 for availability
- 6 **OPTIONAL BACKSHELL KIT (OMIT FOR NONE)**  
B2 Straight strain relief (self-locking), p. J-23  
R2( ) Straight EMI/RFI environmental, p. J-34  
(Add dash number for appropriate shell size, see p. J-34)
- 7 **OPTIONAL ACCESSORY KIT (OMIT FOR NONE)**  
02 Protective cover



### BM01 Cross Reference & Compatibility

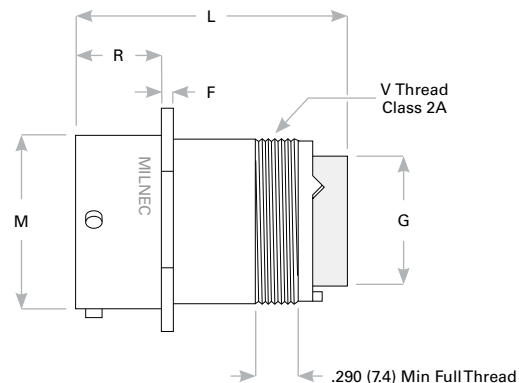
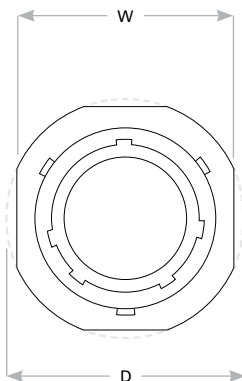
Compatible Brands	Equivalent	Mates
MIL-DTL-26482 Series 2	MS3471	MS3475, MS3476
Aero / Conesys	AE771	AE775, AE776
Amphenol / Matrix	MB13	MB16, MB18
Deutsch	AFD51	AFD56, AFD57
Souriau	—	8526-5, 8526-6

Note: See part builder (p. J-11) for additional kit options.

### Receptacle Dimensions

Shell Size	W	D	L Max	R	F	M	G	V Thread Class 2A
8	.828 (21.0)	.938 (23.8)	1.405 (35.7)	.462 (11.7)	.062 (1.6)	.471 (12.0)	.305 (7.8)	.500-20 UNF
10	.954 (24.2)	1.062 (27.0)	1.405 (35.7)	.462 (11.7)	.062 (1.6)	.588 (14.9)	.405 (10.3)	.625-24 UNEF
12	1.047 (26.6)	1.156 (29.4)	1.405 (35.7)	.462 (11.7)	.062 (1.6)	.748 (19.0)	.531 (13.5)	.750-20 UNEF
14	1.141 (29.0)	1.250 (31.8)	1.405 (35.7)	.462 (11.7)	.062 (1.6)	.873 (22.2)	.665 (16.9)	.875-20 UNEF
16	1.234 (31.3)	1.344 (34.1)	1.405 (35.7)	.462 (11.7)	.062 (1.6)	.998 (25.4)	.790 (20.1)	1.000-20 UNEF
18	1.328 (33.7)	1.438 (36.5)	1.405 (35.7)	.462 (11.7)	.062 (1.6)	1.123 (28.5)	.869 (22.1)	1.062-18 UNEF
20	1.453 (36.9)	1.562 (39.7)	1.465 (37.2)	.587 (14.9)	.094 (2.3)	1.248 (31.7)	.994 (25.2)	1.188-18 UNEF
22	1.578 (40.1)	1.688 (42.9)	1.465 (37.2)	.587 (14.9)	.094 (2.3)	1.373 (34.9)	1.119 (28.4)	1.313-18 UNEF
24	1.703 (43.3)	1.812 (46.0)	1.465 (37.2)	.620 (15.7)	.094 (2.3)	1.498 (38.1)	1.244 (31.6)	1.438-18 UNEF

Dimensions are in inches (mm).



Rev. 1825