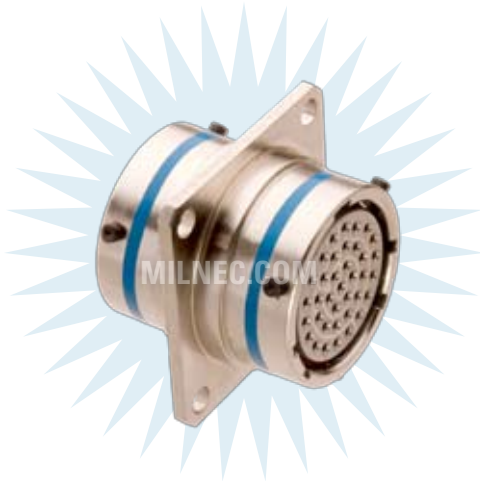


Thru-Bulkhead Receptacle

DL Series • MIL-DTL-38999 Series I Style Connectors



DL22 N 13-35 P 1 N - 03



- 1 BASIC PART NUMBER**
DL22 Thru-bulkhead receptacle
- 2 MATERIAL & FINISH**
N Aluminum, electroless nickel
W Aluminum, olive drab cadmium
- 3 SHELL SIZE & INSERT ARRANGEMENT**
See Insert Arrangement Selection table, p. B-19
- 4 CONTACT STYLE**
P Pins on flange side, sockets opposite
S Sockets on flange side, pins opposite
- 5 PANEL RANGE**
1 .063 (1.6) Min — .125 (3.2) Max
2 .063 (1.6) Min — .250 (6.4) Max
3 .063 (1.6) Min — .500 (12.7) Max
- 6 ALTERNATE KEYING**
N NORMAL or A, B, C, D
- 7 OPTIONAL ACCESSORY KIT (OMIT FOR NONE)**
02 Protective cover (2x)
03 02 kit + mounting bracket + sealing screws

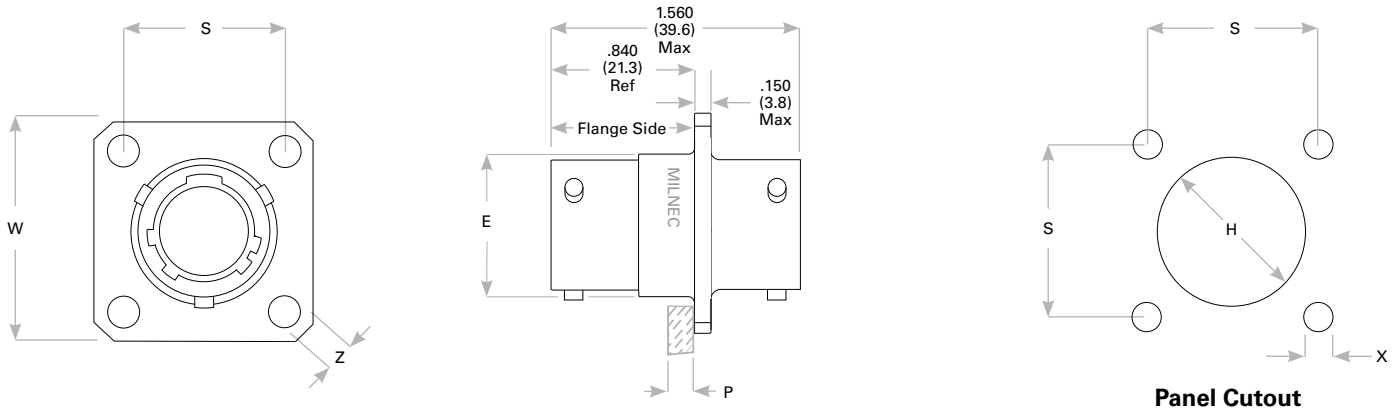
DL22 Compatibility

Compatible Brands	Mates
MIL-DTL-38999 Series I	MS27467
Aero / Conesys	AE167
Amphenol	LJT06, LJTS06
Deutsch	DJT6
ITT Cannon	KJL6
Souriau	8LT5

Receptacle Dimensions

Shell Size	W	Z	E	S	H	X	P Max Panel†
9	.938 (23.8)	.125 (3.2)	.573 (14.6)	.719 (18.3)	.703 (17.9)	.135 (3.4)	See Option 5 for Panel Range
11	1.031 (26.2)	.125 (3.2)	.701 (17.8)	.812 (20.6)	.827 (21.0)	.135 (3.4)	
13	1.125 (28.6)	.125 (3.2)	.851 (21.6)	.906 (23.0)	1.015 (25.8)	.135 (3.4)	
15	1.219 (31.0)	.125 (3.2)	.976 (24.8)	.969 (24.6)	1.140 (29.0)	.135 (3.4)	
17	1.312 (33.3)	.125 (3.2)	1.101 (28.0)	1.062 (27.0)	1.265 (32.1)	.135 (3.4)	
19	1.438 (36.5)	.125 (3.2)	1.208 (30.7)	1.156 (29.4)	1.390 (35.3)	.135 (3.4)	
21	1.562 (39.7)	.125 (3.2)	1.333 (33.9)	1.250 (31.8)	1.515 (38.5)	.135 (3.4)	
23	1.688 (42.9)	.156 (4.0)	1.458 (37.0)	1.375 (34.9)	1.640 (41.7)	.166 (4.2)	
25	1.812 (46.0)	.156 (4.0)	1.583 (40.2)	1.500 (38.1)	1.765 (44.8)	.166 (4.2)	

Dimensions are in inches (mm). † Max panel thickness will ensure proper coupling clearance.



Rev. 1703