

Cable Mount Receptacle

DL Series • MIL-DTL-38999 Series I Style Connectors

DL01 N 13-35 S N - R2(015) - 02

- 1 **BASIC PART NUMBER**
DL01 Cable mount receptacle
- 2 **MATERIAL & FINISH**
N Aluminum, electroless nickel
W Aluminum, olive drab
- 3 **SHELL SIZE & INSERT ARRANGEMENT**
See Insert Arrangement Selection table, p. N-16
- 4 **CONTACT STYLE**
P Pin
S Socket
- 5 **ALTERNATE KEYING**
N NORMAL or A, B, C, D
- 6 **OPTIONAL BACKSHELL KIT (OMIT FOR NONE)**
B2 Straight strain relief (self-locking), p. N-34
R2() Straight EMI/RFI environmental, p. N-36
(Add dash number for appropriate shell size, see p. N-36)
K2 Boot adapter, p. N-48, & straight shrink boot, p. N-46
- 7 **OPTIONAL ACCESSORY KIT (OMIT FOR NONE)**
02 Protective cover



DL01 Compatibility

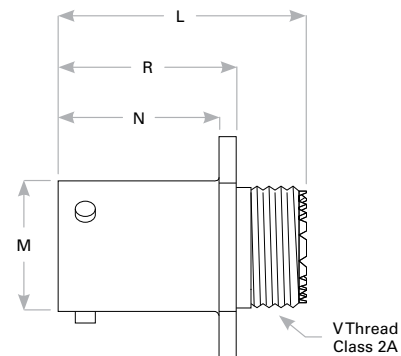
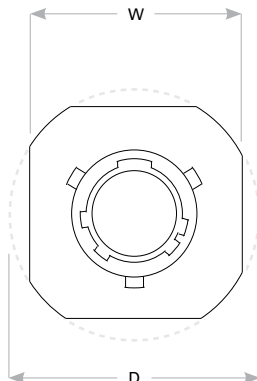
Compatible Brands	Equivalents	Mates
MIL-DTL-38999 Series I	—	MS27467
Aero / Conesys	—	AE167
Amphenol	LJT01	LJT06, LJTS06
Deutsch	—	DJT6
ITT Cannon	KJA0	KJL6
Souriau	8LT1	8LT5

Note: See part builder (p. N-14) for additional kit options.

Receptacle Dimensions

Shell Size	W	D	L	R	N	M	V Thread Class 2A
9	.938 (23.8)	1.094 (27.8)	1.219 (31.0)	.717 (18.2)	.632 (16.1)	.572 (14.5)	.4375-28UNEF
11	1.031 (26.2)	1.188 (30.2)	1.219 (31.0)	.717 (18.2)	.632 (16.1)	.700 (17.8)	.5625-24UNEF
13	1.125 (28.6)	1.281 (32.5)	1.219 (31.0)	.717 (18.2)	.632 (16.1)	.850 (21.6)	.6875-24UNEF
15	1.219 (31.0)	1.375 (34.9)	1.219 (31.0)	.717 (18.2)	.632 (16.1)	.975 (24.8)	.8125-20UNEF
17	1.312 (33.3)	1.469 (37.3)	1.219 (31.0)	.717 (18.2)	.632 (16.1)	1.100 (27.9)	.9375-20UNEF
19	1.438 (36.5)	1.594 (40.5)	1.219 (31.0)	.717 (18.2)	.632 (16.1)	1.207 (30.7)	1.0625-18UNEF
21	1.562 (39.7)	1.719 (43.7)	1.219 (31.0)	.717 (18.2)	.602 (15.3)	1.332 (33.8)	1.1875-18UNEF
23	1.688 (42.9)	1.844 (46.8)	1.219 (31.0)	.717 (18.2)	.602 (15.3)	1.457 (37.0)	1.3125-18UNEF
25	1.812 (46.0)	1.969 (50.0)	1.219 (31.0)	.717 (18.2)	.602 (15.3)	1.582 (40.2)	1.4375-18UNEF

Dimensions are in inches (mm).



Rev. 1604.1