

# MS27496 Connector Type Datasheet

DL Series • MIL-DTL-38999 Series I Style Connectors



## DL02 N 13-35 S N - 03

- 1 **BASIC PART NUMBER**  
DL02 Box mount receptacle (front mount)
- 2 **MATERIAL & FINISH**  
N Aluminum, electroless nickel  
W Aluminum, olive drab cadmium
- 3 **SHELL SIZE & INSERT ARRANGEMENT**  
See Insert Arrangement Selection table, p. N-16
- 4 **CONTACT STYLE**  
P Pin  
S Socket
- 5 **ALTERNATE KEYING**  
N NORMAL or A, B, C, D
- 6 **OPTIONAL ACCESSORY KIT (OMIT FOR NONE)**  
02 Protective cover + mounting gasket  
03 02 kit + mounting bracket + sealing screws

### DL02 Cross-Reference & Compatibility

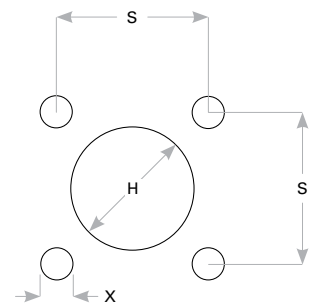
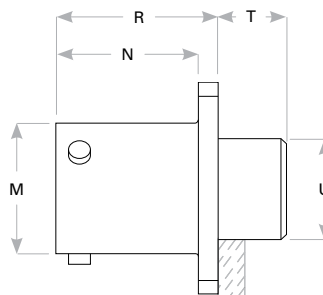
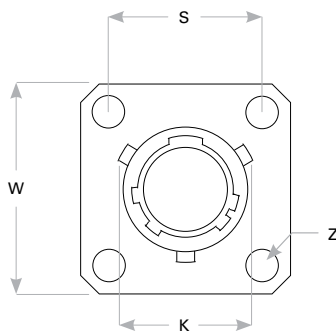
Compatible Brands	Equivalents	Mates
MIL-DTL-38999 Series I	MS27496	MS27467
Aero / Conesys	AE196	AE167
Amphenol	LJT02	LJT06, LJTS06
Deutsch	—	DJT6
ITT Cannon	—	KJL6
Souriau	8LT2	8LT5

Note: See part builder (p. N-14) for additional kit options.

### Receptacle Dimensions

Shell Size	W	K	Z	R	N	T	M	U	S	X	H Front Mount
9	.938 (23.8)	.662 (16.8)	.128 (3.3)	.717 (18.2)	.632 (16.1)	.297 (7.5)	.572 (14.5)	.433 (11.0)	.719 (18.3)	.128 (3.3)	.516 (13.1)
11	1.031 (26.2)	.810 (20.6)	.128 (3.3)	.717 (18.2)	.632 (16.1)	.297 (7.5)	.700 (17.8)	.557 (14.1)	.812 (20.6)	.128 (3.3)	.625 (15.9)
13	1.125 (28.6)	.960 (24.4)	.128 (3.3)	.717 (18.2)	.632 (16.1)	.297 (7.5)	.850 (21.6)	.676 (17.2)	.906 (23.0)	.128 (3.3)	.750 (19.1)
15	1.219 (31.0)	1.085 (27.6)	.128 (3.3)	.717 (18.2)	.632 (16.1)	.297 (7.5)	.975 (24.8)	.801 (20.4)	.969 (24.6)	.128 (3.3)	.906 (23.0)
17	1.312 (33.3)	1.210 (30.7)	.128 (3.3)	.717 (18.2)	.632 (16.1)	.297 (7.5)	1.100 (27.9)	.926 (23.5)	1.062 (27.0)	.128 (3.3)	1.016 (25.8)
19	1.438 (36.5)	1.317 (33.5)	.128 (3.3)	.717 (18.2)	.632 (16.1)	.297 (7.5)	1.207 (30.7)	1.032 (26.2)	1.156 (29.4)	.128 (3.3)	1.141 (29.0)
21	1.562 (39.7)	1.442 (36.6)	.128 (3.3)	.717 (18.2)	.602 (15.3)	.297 (7.5)	1.332 (33.8)	1.157 (29.4)	1.250 (31.8)	.128 (3.3)	1.266 (32.2)
23	1.688 (42.9)	1.567 (39.8)	.147 (3.7)	.717 (18.2)	.602 (15.3)	.297 (7.5)	1.457 (37.0)	1.282 (32.6)	1.375 (34.9)	.147 (3.7)	1.375 (34.9)
25	1.812 (46.0)	1.692 (43.0)	.147 (3.7)	.717 (18.2)	.602 (15.3)	.297 (7.5)	1.582 (40.2)	1.407 (35.7)	1.500 (38.1)	.147 (3.7)	1.484 (37.7)

Dimensions are in inches (mm).



Panel Cutout

Rev. 1825