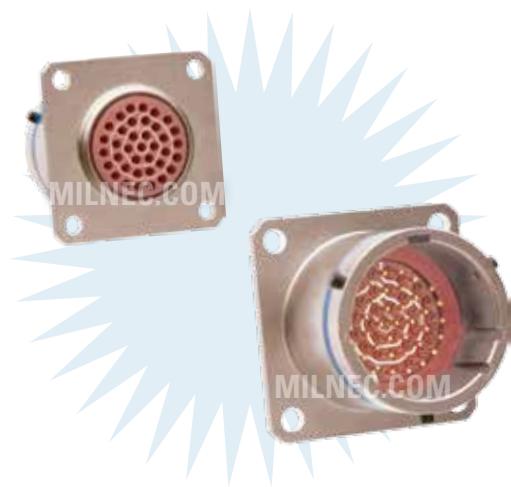


MS27505 Connector Type Datasheet

DL Series • MIL-DTL-38999 Series I Style Connectors

DL03 N 13-35 S N - 03

- 1 **BASIC PART NUMBER**
DL03 Box mount receptacle (rear mount)
- 2 **MATERIAL & FINISH**
N Aluminum, electroless nickel
W Aluminum, olive drab cadmium
- 3 **SHELL SIZE & INSERT ARRANGEMENT**
See Insert Arrangement Selection table, p. N-16
- 4 **CONTACT STYLE**
P Pin
S Socket
- 5 **ALTERNATE KEYING**
N NORMAL or A, B, C, D
- 6 **OPTIONAL ACCESSORY KIT (OMIT FOR NONE)**
02 Protective cover + mounting gasket
03 02 kit + mounting bracket + sealing screws



DL03 Cross-Reference & Compatibility

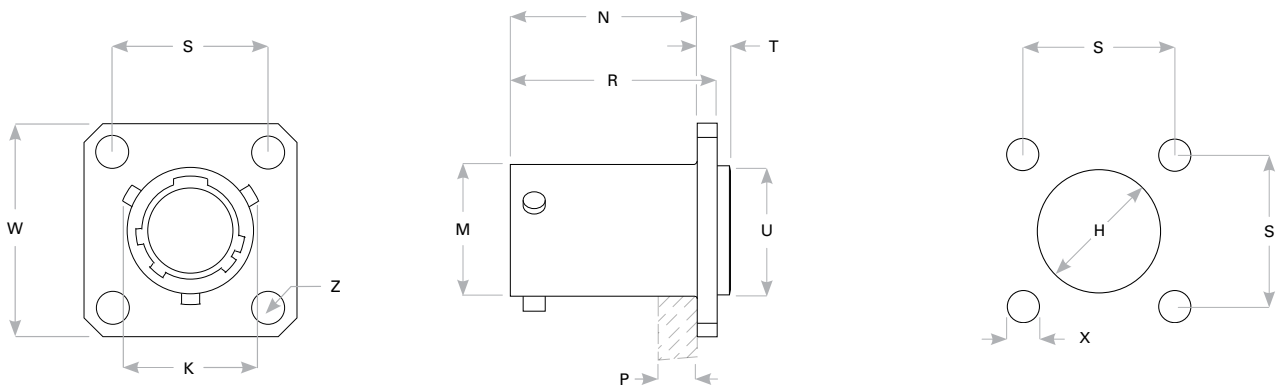
Compatible Brands	Equivalents	Mates
MIL-DTL-38999 Series I	MS27505	MS27467
Aero / Conesys	AE105	AE167
Amphenol	LJTP02	LJT06, LJTS06
Deutsch	—	DJT6
ITT Cannon	KJL5	KJL6
Souriau	—	8LT5

Note: See part builder (p. N-14) for additional kit options.

Receptacle Dimensions

Shell Size	W	K	Z	R	N	T	M	U	P Max Rear Panel*	S	X	H Rear Mount
9	.938 (23.8)	.662 (16.8)	.128 (3.3)	.905 (23.0)	.820 (20.8)	.203 (5.2)	.572 (14.5)	.433 (11.0)	.234 (5.9)	.719 (18.3)	.128 (3.3)	.656 (16.7)
11	1.031 (26.2)	.810 (20.6)	.128 (3.3)	.905 (23.0)	.820 (20.8)	.203 (5.2)	.700 (17.8)	.557 (14.1)	.234 (5.9)	.812 (20.6)	.128 (3.3)	.796 (20.2)
13	1.125 (28.6)	.960 (24.4)	.128 (3.3)	.905 (23.0)	.820 (20.8)	.203 (5.2)	.850 (21.6)	.676 (17.2)	.234 (5.9)	.906 (23.0)	.128 (3.3)	.922 (23.4)
15	1.219 (31.0)	1.085 (27.6)	.128 (3.3)	.905 (23.0)	.820 (20.8)	.203 (5.2)	.975 (24.8)	.801 (20.4)	.234 (5.9)	.969 (24.6)	.128 (3.3)	1.047 (26.6)
17	1.312 (33.3)	1.210 (30.7)	.128 (3.3)	.905 (23.0)	.820 (20.8)	.203 (5.2)	1.100 (27.9)	.926 (23.5)	.234 (5.9)	1.062 (27.0)	.128 (3.3)	1.219 (31.0)
19	1.438 (36.5)	1.317 (33.5)	.128 (3.3)	.905 (23.0)	.820 (20.8)	.203 (5.2)	1.207 (30.7)	1.032 (26.2)	.234 (5.9)	1.156 (29.4)	.128 (3.3)	1.297 (32.9)
21	1.562 (39.7)	1.442 (36.6)	.128 (3.3)	.905 (23.0)	.790 (20.1)	.234 (5.9)	1.332 (33.8)	1.157 (29.4)	.204 (5.2)	1.250 (31.8)	.128 (3.3)	1.422 (36.1)
23	1.688 (42.9)	1.567 (39.8)	.147 (3.7)	.905 (23.0)	.790 (20.1)	.234 (5.9)	1.457 (37.0)	1.282 (32.6)	.204 (5.2)	1.375 (34.9)	.147 (3.7)	1.547 (39.3)
25	1.812 (46.0)	1.692 (43.0)	.147 (3.7)	.905 (23.0)	.790 (20.1)	.234 (5.9)	1.582 (40.2)	1.407 (35.7)	.193 (4.9)	1.500 (38.1)	.147 (3.7)	1.672 (42.5)

Dimensions are in inches (mm). * Max panel thickness will ensure proper coupling clearance.



Panel Cutout

Rev. 1825