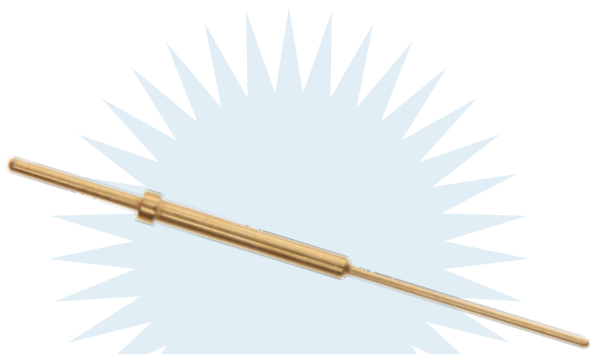
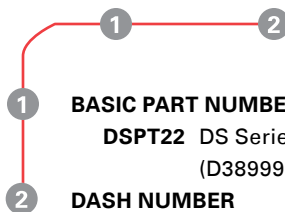


#22D PC Tail Pin Contact

DS Series • MIL-DTL-38999 Series II Style Connectors



DSPT22 - 115



1 BASIC PART NUMBER

DSPT22 DS Series #22D PC tail pin contact
(D38999 Series II compatible)

2 DASH NUMBER

115 Dash number determines contact length
See table below for dash number selection

DSPT22 Compatibility

Compatible Brands	Receptacles
MIL-DTL-38999 Series II	MS27472, MS27474, MS27497, MS27499, MS27508, MS27513
Aero / Conesys	AE272, AE274, AE297, AE299, AE208, AE213
Amphenol	JT00, JTPQ00, JT01, JT02, JTP02, JT07
ITT Cannon	KJ0, KJ2, KJ3, KJ5, KJ7
Souriau	8T1, 8T2, 8T3, 8T7

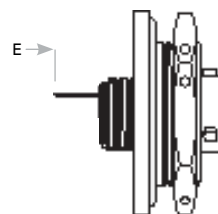
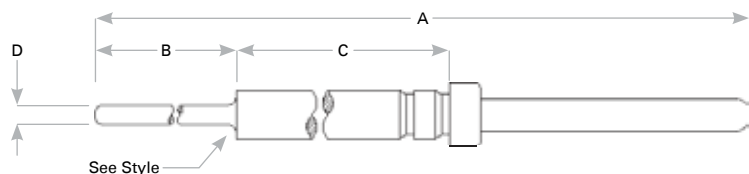
Specifications

SAE-AS39029 Compliant: Mating interface meets or exceeds the requirements and specifications of M39029/58-360, except as indicated.

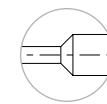
Contact Material: Beryllium copper alloy.

Mating Interface Finish: Gold plate per IAW ASTM B488-01, Type II, Code C, Class 1.25 (.000050 Min) over nickel IAW AMS QQ-N-290, Class 1, 0.000050 - 0.000100 thick.

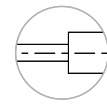
Compatibility: Contacts may be used in #22M or #22D inserts.



Estimated tail stickout on DS07 (MS27474)



Beveled Style



Flat Style

Size #22D PC Tail Pin Contact Dimensions

Part Number	Popular	A	B	C	D	Shoulder Style	E Min - Max Tail Stickout* DS00 (MS27472) DS02 (MS27513) DS04 (MS27497) DS07 (MS27474)	E Min - Max Tail Stickout* DS03 (MS27508)
DSPT22-101		.860 (21.84)	.283 (7.19)	.280 (7.11)	.019 (.48)	Beveled	.024 (.61) - .054 (1.37)	.129 (3.28) - .159 (4.04)
DSPT22-102	★	.882 (22.40)	.305 (7.75)	.280 (7.11)	.019 (.48)	Beveled	.046 (1.17) - .076 (1.93)	.151 (3.84) - .181 (4.60)
DSPT22-103	★	.939 (23.85)	.266 (6.76)	.376 (9.55)	.019 (.48)	Beveled	.103 (2.62) - .133 (3.38)	.208 (5.28) - .238 (6.05)
DSPT22-104		.947 (24.05)	.274 (6.96)	.376 (9.55)	.019 (.48)	Beveled	.111 (2.82) - .141 (3.58)	.216 (5.49) - .246 (6.25)
DSPT22-105		.957 (24.31)	.380 (9.65)	.280 (7.11)	.019 (.48)	Beveled	.121 (3.07) - .151 (3.84)	.226 (5.74) - .256 (6.50)
DSPT22-106	★	.984 (24.99)	.235 (5.97)	.452 (11.48)	.019 (.48)	Beveled	.148 (3.76) - .178 (4.52)	.253 (6.43) - .283 (7.19)
DSPT22-107		.996 (25.30)	.369 (9.37)	.330 (8.38)	.019 (.48)	Beveled	.160 (4.06) - .190 (4.83)	.265 (6.73) - .295 (7.49)
DSPT22-108		1.032 (26.21)	.455 (11.56)	.280 (7.11)	.019 (.48)	Beveled	.196 (4.98) - .226 (5.74)	.301 (7.65) - .331 (8.41)
DSPT22-109	★	1.044 (26.52)	.371 (9.42)	.376 (9.55)	.019 (.48)	Beveled	.208 (5.28) - .238 (6.05)	.313 (7.95) - .343 (8.71)
DSPT22-110	★	1.051 (26.70)	.378 (9.60)	.376 (9.55)	.019 (.48)	Beveled	.215 (5.46) - .245 (6.22)	.320 (8.13) - .350 (8.89)
DSPT22-111		1.080 (27.43)	.323 (8.20)	.460 (11.68)	.019 (.48)	Beveled	.244 (6.20) - .274 (6.96)	.349 (8.87) - .379 (9.63)
DSPT22-112		1.112 (28.25)	.439 (11.15)	.376 (9.55)	.019 (.48)	Beveled	.276 (7.01) - .306 (7.77)	.381 (9.68) - .411 (10.45)
DSPT22-113	★	1.162 (29.52)	.489 (12.42)	.376 (9.55)	.019 (.48)	Beveled	.326 (8.28) - .356 (9.04)	.431 (10.95) - .461 (11.71)
DSPT22-114		1.170 (29.72)	.413 (10.49)	.460 (11.68)	.019 (.48)	Beveled	.334 (8.48) - .364 (9.25)	.439 (11.15) - .469 (11.91)
DSPT22-115		1.177 (29.90)	.430 (10.92)	.450 (11.43)	.019 (.48)	Flat	.341 (8.66) - .371 (9.42)	.446 (11.33) - .476 (12.09)

Dimensions are in inches (mm). *Stickout tolerance ± 0.02 (0.5mm). Stickout length dependent upon shell style. ★ Most popular call-outs, best in-stock solutions.

Tail stickout dimensions are for Miltec connectors. When used in compatible connectors from other brands, dimensions can vary as much as ± 0.10 inches due to manufacturing differences.

(Continued on next page)

Rev. 1744

#22D PC Tail Pin Contact

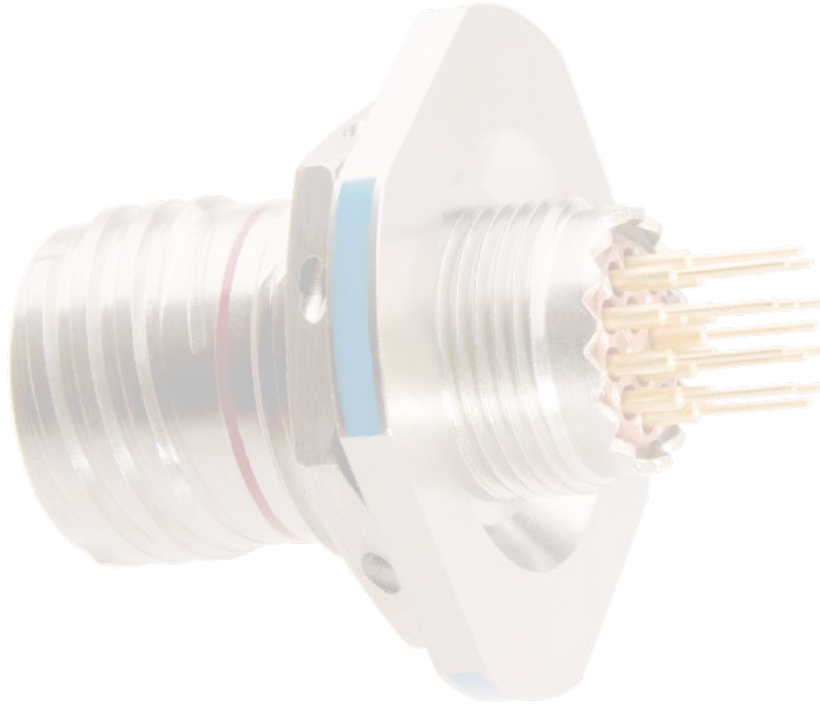
DS Series • MIL-DTL-38999 Series II Style Connectors

(Continued from previous page)

Size #22D PC Tail Pin Contact Dimensions (continued)

Part Number	Popular	A	B	C	D	Shoulder Style	E Min - Max Tail Stickout [†]	
							DS00 (MS27472)	DS03 (MS27508)
DSPT22-116		1.243 (31.57)	.492 (12.50)	.454 (11.53)	.019 (.48)	Flat	.407 (10.34) - .437 (11.10)	.512 (13.01) - .542 (13.77)
DSPT22-117		1.247 (31.67)	.250 (6.35)	.700 (17.78)	.019 (.48)	Beveled	.411 (10.44) - .441 (11.20)	.516 (13.11) - .546 (13.87)
DSPT22-118		1.247 (31.67)	.670 (17.02)	.280 (7.11)	.019 (.48)	Beveled	.411 (10.44) - .441 (11.20)	.516 (13.11) - .546 (13.87)
DSPT22-119		1.324 (33.63)	.573 (14.55)	.454 (11.53)	.019 (.48)	Beveled	.488 (12.40) - .518 (13.16)	.593 (15.06) - .623 (15.82)
DSPT22-120		1.345 (34.16)	.562 (14.28)	.486 (12.34)	.019 (.48)	Beveled	.509 (12.93) - .539 (13.69)	.614 (15.60) - .644 (16.36)
DSPT22-121		1.439 (36.55)	.656 (16.66)	.486 (12.34)	.019 (.48)	Beveled	.603 (15.32) - .633 (16.08)	.708 (17.98) - .738 (18.75)
DSPT22-122		1.447 (36.75)	.690 (17.53)	.460 (11.68)	.019 (.48)	Beveled	.611 (15.52) - .641 (16.28)	.716 (18.19) - .746 (18.95)
DSPT22-123		1.452 (36.88)	.669 (16.99)	.486 (12.34)	.019 (.48)	Beveled	.616 (15.65) - .646 (16.41)	.721 (18.31) - .751 (19.08)
DSPT22-124		1.514 (38.46)	.764 (19.41)	.453 (11.51)	.019 (.48)	Beveled	.678 (17.22) - .708 (17.98)	.783 (19.89) - .813 (20.65)

Dimensions are in inches (mm). [†]Stickout tolerance ± 0.02 (0.5mm). Stickout length dependent upon shell style. * Most popular call-outs, best in-stock solutions. Tail stickout dimensions are for Milnec connectors. When used in compatible connectors from other brands, dimensions can vary as much as ± 0.10 inches due to manufacturing differences.



DS