

# Cable Mount Receptacle

DS Series • MIL-DTL-38999 Series II Style Connectors



## DS01 Compatibility

Compatible Brands	Mates
MIL-DTL-38999 Series II	MS27473, MS27484
Aero / Conesys	AE273, AE284
Amphenol	JT06, JTG06
ITT Cannon	KJ6, KJG6
Souriau	8T6

## DS01 N 12-35 S N - R2(015) - 02

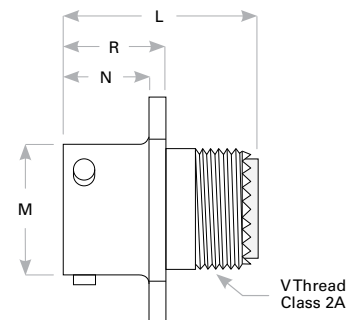
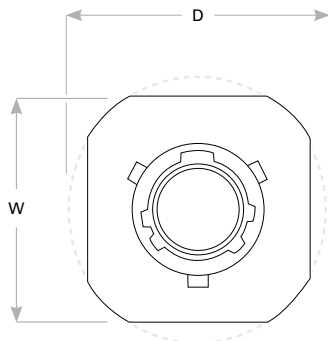
- 1 **BASIC PART NUMBER**  
DS01 Cable mount receptacle
- 2 **MATERIAL & FINISH**  
N Aluminum, electroless nickel  
W Aluminum, olive drab
- 3 **SHELL SIZE & INSERT ARRANGEMENT**  
See Insert Arrangement Selection table, p. R-16
- 4 **CONTACT STYLE**  
P Pin  
S Socket
- 5 **ALTERNATE KEYING**  
N NORMAL or A, B, C, D
- 6 **OPTIONAL BACKSHELL KIT (OMIT FOR NONE)**  
B2 Straight strain relief (self-locking), p. R-36  
R2( ) Straight EMI/RFI environmental, p. R-38  
(Add dash number for appropriate shell size, see p. R-38)  
K2 Boot adapter, p. R-50, & straight shrink boot, p. R-48
- 7 **OPTIONAL ACCESSORY KIT (OMIT FOR NONE)**  
02 Protective cover

Note: See part builder (p. R-14) for additional kit options.

## Receptacle Dimensions

Shell Size	W Max	D Max	L Max	R Max	N Max	M Max	V Thread Class 2A
8	.829 (21.1)	.965 (24.5)	.891 (22.6)	.386 (9.8)	.322 (8.2)	.474 (12.0)	.4375-28 UNEF
10	.955 (24.3)	1.089 (27.7)	.891 (22.6)	.386 (9.8)	.322 (8.2)	.591 (15.0)	.5625-24 UNEF
12	1.048 (26.6)	1.183 (30.0)	.891 (22.6)	.386 (9.8)	.322 (8.2)	.751 (19.1)	.6875-24 UNEF
14	1.142 (29.0)	1.277 (32.4)	.891 (22.6)	.386 (9.8)	.322 (8.2)	.876 (22.3)	.8125-20 UNEF
16	1.236 (31.4)	1.371 (34.8)	.891 (22.6)	.386 (9.8)	.322 (8.2)	1.001 (25.4)	.9375-20 UNEF
18	1.329 (33.8)	1.465 (37.2)	.891 (22.6)	.386 (9.8)	.322 (8.2)	1.126 (28.6)	1.0625-18 UNEF
20	1.455 (37.0)	1.589 (40.4)	.891 (22.6)	.386 (9.8)	.322 (8.2)	1.251 (31.8)	1.1875-18 UNEF
22	1.579 (40.1)	1.715 (43.6)	.891 (22.6)	.386 (9.8)	.322 (8.2)	1.376 (35.0)	1.3125-18 UNEF
24	1.705 (43.3)	1.838 (46.7)	.891 (22.6)	.386 (9.8)	.322 (8.2)	1.501 (38.1)	1.4375-18 UNEF

Dimensions are in inches (mm).



Rev. 1906