

DS19 HA 14-15 P N - 02

- 1 **BASIC PART NUMBER**
DS19 Hermetic solder mount receptacle
 Helium leakage 1.0×10^{-7} cc³/sec at
 15 psi (1.1 kg/cm²). Insert rated to 14,000 psi
 (984 kg/cm²) when precision welded or soldered.
- 2 **MATERIAL & FINISH**
HA Stainless steel, passivated
HB Stainless steel, electrodeposited nickel
- 3 **SHELL SIZE & INSERT ARRANGEMENT**
 See Insert Arrangement Selection table, p. R-16
 (Verify hermetic availability on table)
- 4 **CONTACT STYLE**
P Pin, gold plated, solder cup termination
H* Socket, gold plated, solder cup termination
- 5 **ALTERNATE KEYING**
N NORMAL or A, B, C, D
- 6 **OPTIONAL ACCESSORY KIT (OMIT FOR NONE)**
02 Protective cover

* Please consult an authorized distributor for lead time and minimum quantity requirements.



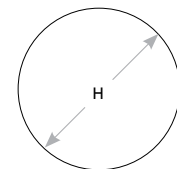
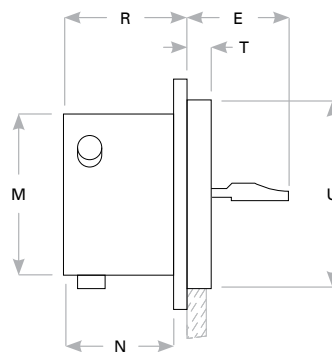
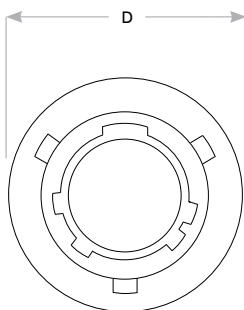
DS19 Compatibility

Compatible Brands	Mates
MIL-DTL-38999 Series II	MS27473, MS27484
Aero / Conesys	AE273, AE284
Amphenol	JT06, JTG06
ITT Cannon	KJ6, KJG6
Souriau	8T6

Receptacle Dimensions

Shell Size	D	R	N	T	E	M	U	H Front Mount
8	.687 (17.5)	.348 (8.8)	.317 (8.1)	.078 (2.0)	.340 (8.6)	.473 (12.0)	.562 (14.3)	.592 (15.0)
10	.797 (20.2)	.348 (8.8)	.317 (8.1)	.078 (2.0)	.340 (8.6)	.590 (15.0)	.672 (17.1)	.702 (17.8)
12	.906 (23.0)	.348 (8.8)	.317 (8.1)	.078 (2.0)	.340 (8.6)	.750 (19.1)	.781 (19.8)	.811 (20.6)
14	1.031 (26.2)	.348 (8.8)	.317 (8.1)	.078 (2.0)	.340 (8.6)	.875 (22.2)	.906 (23.0)	.936 (23.8)
16	1.156 (29.4)	.348 (8.8)	.317 (8.1)	.078 (2.0)	.340 (8.6)	1.000 (25.4)	1.031 (26.2)	1.061 (27.0)
18	1.281 (32.5)	.348 (8.8)	.317 (8.1)	.078 (2.0)	.340 (8.6)	1.125 (28.6)	1.156 (29.4)	1.186 (30.1)
20	1.375 (34.9)	.348 (8.8)	.317 (8.1)	.078 (2.0)	.340 (8.6)	1.250 (31.8)	1.250 (31.8)	1.280 (32.5)
22	1.500 (38.1)	.348 (8.8)	.317 (8.1)	.107 (2.7)	.340 (8.6)	1.375 (34.9)	1.375 (34.9)	1.405 (35.7)
24	1.625 (41.3)	.348 (8.8)	.317 (8.1)	.107 (2.7)	.340 (8.6)	1.500 (38.1)	1.500 (38.1)	1.530 (38.9)

Dimensions are in inches (mm).



Panel Cutout