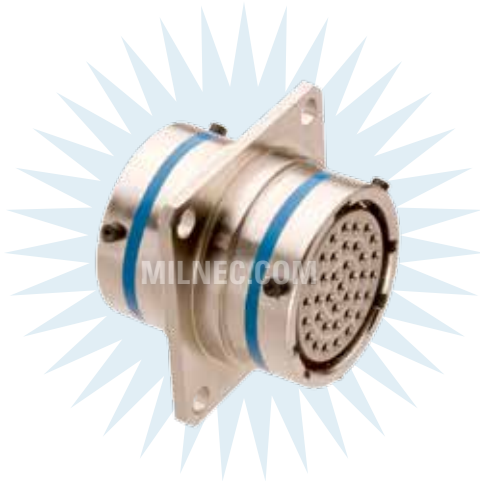


Thru-Bulkhead Receptacle

DS Series • MIL-DTL-38999 Series II Style Connectors



DS22 Compatibility

Compatible Brands	Mates
MIL-DTL-38999 Series II	MS27473, MS27484
Aero / Conesys	AE273, AE284
Amphenol	JT06, JTG06
ITT Cannon	KJ6, KJG6
Souriau	8T6

DS22 N 14-35 P 1 N - 03

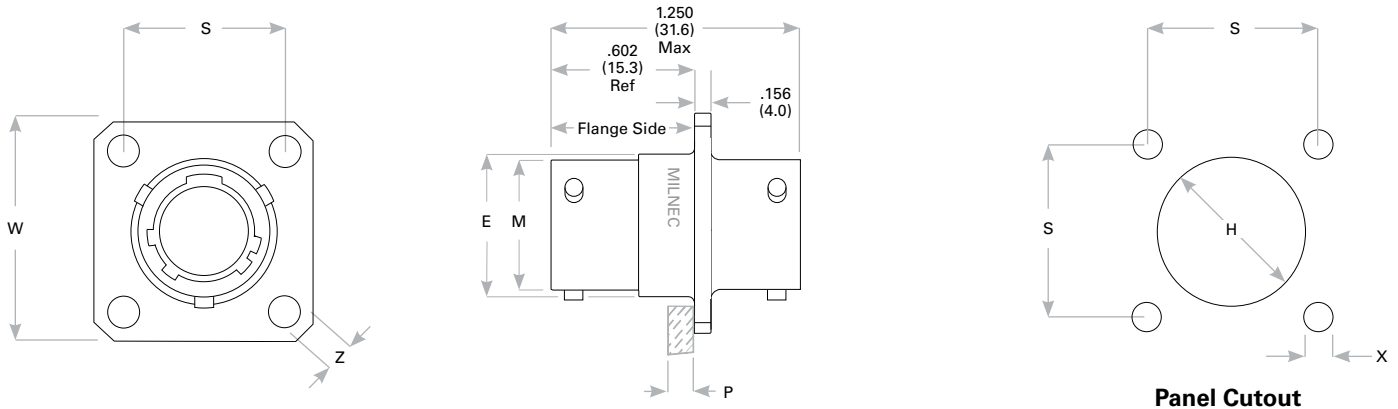


- 1 BASIC PART NUMBER**
DS22 Thru-bulkhead receptacle
- 2 MATERIAL & FINISH**
N Aluminum, electroless nickel
W Aluminum, olive drab cadmium
K Stainless steel, passivated (firewall)
- 3 SHELL SIZE & INSERT ARRANGEMENT**
See Insert Arrangement Selection table, p. B-19
- 4 CONTACT STYLE**
P Pins on flange side, sockets opposite
S Sockets on flange side, pins opposite
- 5 PANEL RANGE**
1 .063 (1.6) Min — .125 (3.2) Max
2 .063 (1.6) Min — .250 (6.4) Max
3 .063 (1.6) Min — .500 (12.7) Max
- 6 ALTERNATE KEYING**
N NORMAL or A, B, C, D
- 7 OPTIONAL ACCESSORY KIT (OMIT FOR NONE)**
02 Protective cover (2x)
03 02 kit + mounting bracket + sealing screws

Receptacle Dimensions

Shell Size	W	Z	E	M	S	H	X	P Max Panel [‡]
8	.812 (20.6)	.120 (3.1)	.516 (13.1)	.473 (12.0)	.594 (15.1)	.580 (14.7)	.130 (3.3)	See Option 5 for Panel Range
10	.938 (23.8)	.120 (3.1)	.633 (16.1)	.590 (15.0)	.719 (18.3)	.697 (17.7)	.130 (3.3)	
12	1.031 (26.2)	.120 (3.1)	.802 (20.4)	.750 (19.1)	.812 (20.6)	.885 (22.5)	.130 (3.3)	
14	1.125 (28.6)	.120 (3.1)	.927 (23.6)	.875 (22.2)	.906 (23.0)	1.010 (25.7)	.130 (3.3)	
16	1.219 (31.0)	.120 (3.1)	1.052 (26.7)	1.000 (25.4)	.969 (24.6)	1.135 (28.8)	.130 (3.3)	
18	1.312 (33.3)	.120 (3.1)	1.177 (29.9)	1.125 (28.6)	1.062 (27.0)	1.260 (32.0)	.130 (3.3)	
20	1.438 (36.5)	.120 (3.1)	1.302 (33.1)	1.250 (31.8)	1.156 (29.4)	1.385 (35.2)	.130 (3.3)	
22	1.562 (39.7)	.120 (3.1)	1.427 (36.3)	1.375 (34.9)	1.250 (31.8)	1.510 (38.4)	.130 (3.3)	
24	1.688 (42.9)	.147 (3.7)	1.552 (39.4)	1.500 (38.1)	1.375 (34.9)	1.635 (41.5)	.154 (3.9)	

Dimensions are in inches (mm). ‡ Max panel thickness will ensure proper coupling clearance.



Rev. 1806