

# #12 PC Tail Socket Contact

DS Series • MIL-DTL-38999 Series II Style Connectors

## DSST12 - 110

- 1 **BASIC PART NUMBER**  
**DSST12** DS Series #12 PC tail socket contact  
 (MIL-DTL-38999 Series II compatible)
- 2 **DASH NUMBER**  
**110** Dash number determines contact length  
 See table below for dash number selection



## Specifications

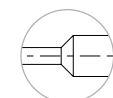
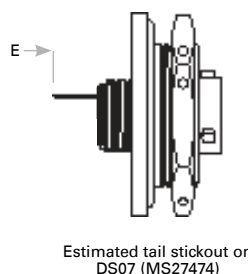
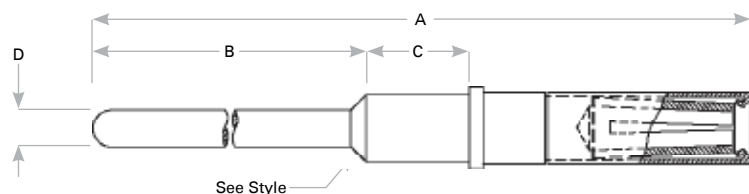
**SAE-AS39029 Compliant:** Mating interface meets or exceeds the requirements and specifications of M39029/56-353, except as indicated.

**Contact Material:** Beryllium copper alloy body, Stainless steel hoods

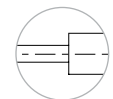
**Mating Interface Finish:** Gold plate per IAW ASTM B488-01, Type II, Code C, Class 1.25 (.000050 Min) over nickel IAW AMS QQ-N-290, Class 1, 0.000050 - 0.000100 thick.

## DSST12 Compatibility

Compatible Brands	Receptacles
<b>MIL-DTL-38999 Series II</b>	MS27472, MS27474, MS27497, MS27499, MS27508, MS27513
<b>Aero / Conesys</b>	AE272, AE274, AE297, AE299, AE208, AE213
<b>Amphenol</b>	JT00, JTPQ00, JT01, JT02, JTP02, JT07
<b>ITT Cannon</b>	KJ0, KJ2, KJ3, KJ5, KJ7
<b>Souriau</b>	8T1, 8T2, 8T3, 8T7



Beveled Style



Flat Style

## Size #12 PC Tail Socket Contact Dimensions

Part Number	Popular	A	B	C	D	Shoulder Style	E Min - Max Tail Stickout <sup>†</sup> DS00 (MS27472) DS02 (MS27513) DS04 (MS27497) DS07 (MS27474)	E Min - Max Tail Stickout <sup>†</sup> DS03 (MS27508)
DSST12-101		.788 (20.02)	.118 (3.00)	.386 (9.80)	.082 (2.08)	Beveled	—	.057 (1.45) - .087 (2.21)
DSST12-102		.808 (20.52)	.138 (3.51)	.386 (9.80)	.082 (2.08)	Beveled	-.002 (.05)	.077 (1.96) - .107 (2.72)
DSST12-103		.827 (21.01)	.157 (3.99)	.386 (9.80)	.082 (2.08)	Beveled	-.021 (.53)	.096 (2.44) - .126 (3.20)
DSST12-104		.985 (25.02)	.118 (3.00)	.386 (9.80)	.082 (2.08)	Beveled	.149 (3.79) - .179 (4.55)	.254 (6.45) - .284 (7.21)
DSST12-105		1.005 (25.52)	.138 (3.51)	.386 (9.80)	.082 (2.08)	Beveled	.169 (4.29) - .199 (5.06)	.274 (6.96) - .304 (7.72)
DSST12-106		1.024 (26.01)	.157 (3.99)	.386 (9.80)	.082 (2.08)	Beveled	.188 (4.78) - .218 (5.54)	.293 (7.44) - .323 (8.20)
DSST12-107		1.044 (26.52)	.177 (4.50)	.386 (9.80)	.082 (2.08)	Beveled	.208 (5.28) - .238 (6.05)	.313 (7.95) - .343 (8.71)
DSST12-108		1.064 (27.03)	.197 (5.00)	.386 (9.80)	.082 (2.08)	Beveled	.228 (5.79) - .258 (6.55)	.333 (8.46) - .363 (9.22)
DSST12-109		1.084 (27.53)	.217 (5.51)	.386 (9.80)	.082 (2.08)	Beveled	.248 (6.30) - .278 (7.06)	.353 (8.97) - .383 (9.73)
DSST12-110	★	1.094 (27.79)	.560 (14.22)	.250 (6.35)	.095 (2.41)	Beveled	.258 (6.55) - .288 (7.32)	.363 (9.22) - .393 (9.98)
DSST12-111		1.103 (28.02)	.236 (5.99)	.386 (9.80)	.082 (2.08)	Beveled	.267 (6.78) - .297 (7.54)	.372 (9.45) - .402 (10.21)

Dimensions are in inches (mm). <sup>†</sup>Stickout tolerance  $\pm 0.02$  (0.5mm). Stickout length dependent upon shell style. ★ Most popular call-outs, best in-stock solutions.

Tail stickout dimensions are for Milnec connectors. When used in compatible connectors from other brands, dimensions can vary as much as  $\pm 0.10$  inches due to manufacturing differences.

Rev. 1744