

MS27497 Connector Type Datasheet

DS Series • MIL-DTL-38999 Series II Style Connectors

DS04 N 14-35 S N - R2(019) - 03

- 1 **BASIC PART NUMBER**
DS04 Wall mount receptacle (rear mount)
- 2 **MATERIAL & FINISH**
N Aluminum, electroless nickel
W Aluminum, olive drab cadmium
- 3 **SHELL SIZE & INSERT ARRANGEMENT**
See Insert Arrangement Selection table, p. R-16
- 4 **CONTACT STYLE**
P Pin
S Socket
- 5 **ALTERNATE KEYING**
N NORMAL or A, B, C, D
- 6 **OPTIONAL BACKSHELL KIT (OMIT FOR NONE)**
B2 Straight strain relief (self-locking), p. R-36
R2() Straight EMI/RFI environmental, p. R-38
(Add dash number for appropriate shell size, see p. R-38)
K2 Boot adapter, p. R-50, & straight shrink boot, p. R-48
- 7 **OPTIONAL ACCESSORY KIT (OMIT FOR NONE)**
02 Protective cover + mounting gasket
03 02 kit + mounting bracket + sealing screws



DS04 Cross-Reference & Compatibility

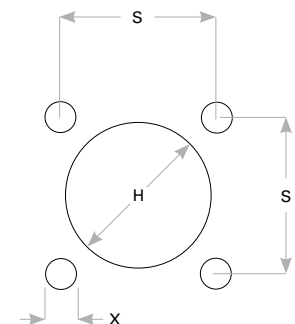
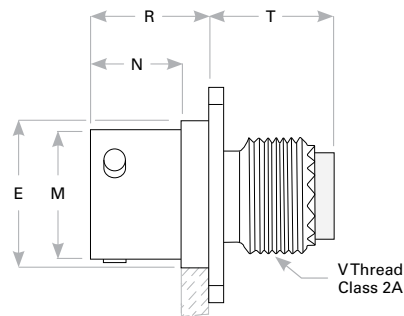
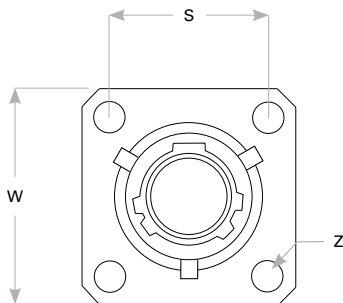
Compatible Brands	Equivalents	Mates
MIL-DTL-38999 Series II	MS27497	MS27473, MS27484
Aero / Conesys	AE297	AE273, AE284
Amphenol	JTPQ00	JT06, JTG06
ITT Cannon	KJ3	KJ6, KJG6
Souriau	8T3	8T6

Note: See part builder (p. R-14) for additional kit options.

Receptacle Dimensions

Shell Size	W	Z	R	N	T	E	M	V Thread Class 2A	P Max Panel	S	X	H Rear Mount
8	.812 (20.6)	.120 (3.0)	.447 (11.4)	.322 (8.2)	.438 (11.1)	.516 (13.1)	.473 (12.0)	.4375-28 UNEF	.142 (3.6)	.594 (15.1)	.130 (3.3)	.557 (14.2)
10	.938 (23.8)	.120 (3.0)	.447 (11.4)	.322 (8.2)	.438 (11.1)	.633 (16.1)	.590 (15.0)	.5625-24 UNEF	.142 (3.6)	.719 (18.3)	.130 (3.3)	.682 (17.3)
12	1.031 (26.2)	.120 (3.0)	.447 (11.4)	.322 (8.2)	.438 (11.1)	.802 (20.4)	.750 (19.1)	.6875-24 UNEF	.142 (3.6)	.812 (20.6)	.130 (3.3)	.854 (21.7)
14	1.125 (28.6)	.120 (3.0)	.447 (11.4)	.322 (8.2)	.438 (11.1)	.927 (23.5)	.875 (22.2)	.8125-20 UNEF	.142 (3.6)	.906 (23.0)	.130 (3.3)	.979 (24.9)
16	1.219 (31.0)	.120 (3.0)	.447 (11.4)	.322 (8.2)	.438 (11.1)	1.052 (26.7)	1.000 (25.4)	.9375-20 UNEF	.142 (3.6)	.969 (24.6)	.130 (3.3)	1.104 (28.0)
18	1.312 (33.3)	.120 (3.0)	.447 (11.4)	.322 (8.2)	.438 (11.1)	1.177 (29.9)	1.125 (28.6)	1.0625-18 UNEF	.142 (3.6)	1.062 (27.0)	.130 (3.3)	1.229 (31.2)
20	1.438 (36.5)	.120 (3.0)	.447 (11.4)	.322 (8.2)	.438 (11.1)	1.302 (33.1)	1.250 (31.8)	1.1875-18 UNEF	.142 (3.6)	1.156 (29.4)	.130 (3.3)	1.354 (34.4)
22	1.562 (39.7)	.120 (3.0)	.447 (11.4)	.322 (8.2)	.438 (11.1)	1.427 (36.2)	1.375 (34.9)	1.3125-18 UNEF	.142 (3.6)	1.250 (31.8)	.130 (3.3)	1.479 (37.6)
24	1.688 (42.9)	.147 (3.7)	.447 (11.4)	.322 (8.2)	.438 (11.1)	1.552 (39.4)	1.500 (38.1)	1.4375-18 UNEF	.142 (3.6)	1.375 (34.9)	.154 (3.9)	1.604 (40.7)

Dimensions are in inches (mm).



Panel Cutout

Rev. 1825

DS