

MS27508 Connector Type Datasheet

DS Series • MIL-DTL-38999 Series II Style Connectors

DS03 N 14-35 S N - 03

- 1 **BASIC PART NUMBER**
DS03 Box mount receptacle (rear mount)
- 2 **MATERIAL & FINISH**
N Aluminum, electroless nickel
W Aluminum, olive drab cadmium
- 3 **SHELL SIZE & INSERT ARRANGEMENT**
See Insert Arrangement Selection table, p. R-16
- 4 **CONTACT STYLE**
P Pin
S Socket
- 5 **ALTERNATE KEYING**
N NORMAL or A, B, C, D
- 6 **OPTIONAL ACCESSORY KIT (OMIT FOR NONE)**
02 Protective cover + mounting gasket
03 02 kit + mounting bracket + sealing screws



DS03 Cross-Reference & Compatibility

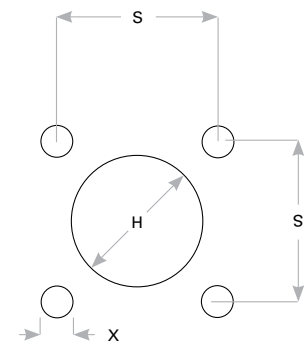
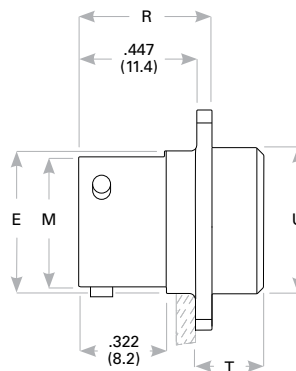
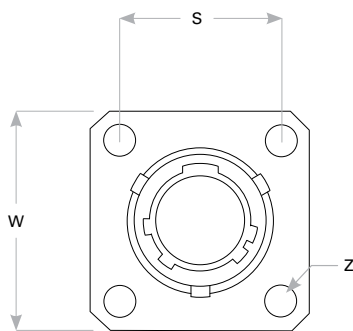
Compatible Brands	Equivalents	Mates
MIL-DTL-38999 Series II	MS27508	MS27473, MS27484
Aero / Conesys	AE208	AE273, AE284
Amphenol	JTP02	JT06, JTG06
ITT Cannon	KJ5	KJ6, KJG6
Souriau	—	8T6

Note: See part builder (p. R-14) for additional kit options.

Receptacle Dimensions

Shell Size	W	Z	R	T	E	M	U	P Max Panel	S	X	H Rear Mount
8	.812 (20.6)	.120 (3.1)	.505 (12.8)	.225 (5.7)	.516 (13.1)	.473 (12.0)	.531 (13.5)	.147 (3.7)	.594 (15.1)	.130 (3.3)	.557 (14.2)
10	.938 (23.8)	.120 (3.1)	.505 (12.8)	.225 (5.7)	.633 (16.1)	.590 (15.0)	.656 (16.7)	.152 (3.9)	.719 (18.3)	.130 (3.3)	.682 (17.3)
12	1.031 (26.2)	.120 (3.1)	.505 (12.8)	.225 (5.7)	.802 (20.4)	.750 (19.1)	.828 (21.0)	.152 (3.9)	.812 (20.6)	.130 (3.3)	.854 (21.7)
14	1.125 (28.6)	.120 (3.1)	.505 (12.8)	.225 (5.7)	.927 (23.6)	.875 (22.2)	.953 (24.2)	.152 (3.9)	.906 (23.0)	.130 (3.3)	.979 (24.9)
16	1.219 (31.0)	.120 (3.1)	.505 (12.8)	.225 (5.7)	1.052 (26.7)	1.000 (25.4)	1.078 (27.4)	.152 (3.9)	.969 (24.6)	.130 (3.3)	1.104 (28.0)
18	1.312 (33.3)	.120 (3.1)	.505 (12.8)	.225 (5.7)	1.177 (29.9)	1.125 (28.6)	1.203 (30.6)	.152 (3.9)	1.062 (27.0)	.130 (3.3)	1.229 (31.2)
20	1.438 (36.5)	.120 (3.1)	.505 (12.8)	.225 (5.7)	1.302 (33.1)	1.250 (31.8)	1.328 (33.7)	.179 (4.6)	1.156 (29.4)	.130 (3.3)	1.354 (34.4)
22	1.562 (39.7)	.120 (3.1)	.505 (12.8)	.225 (5.7)	1.427 (36.3)	1.375 (34.9)	1.453 (36.9)	.179 (4.6)	1.250 (31.8)	.130 (3.3)	1.479 (37.6)
24	1.688 (42.9)	.147 (3.7)	.505 (12.8)	.225 (5.7)	1.552 (39.4)	1.500 (38.1)	1.578 (40.1)	.169 (4.3)	1.375 (34.9)	.154 (3.9)	1.604 (40.7)

Dimensions are in inches (mm).



Panel Cutout

Rev. 1825