

Cable Mount Receptacle

TX Series • MIL-DTL-38999 Series III Style Connectors

TX01 K 13-35 S N - R2(015) - 02

- 1 **BASIC PART NUMBER**
TX01 Cable mount receptacle
- 2 **MATERIAL & FINISH**
K Stainless steel, passivated (firewall)
KS Stainless steel, electrodeposited nickel (firewall)
L Stainless steel, electrodeposited nickel
- 3 **SHELL SIZE & INSERT ARRANGEMENT**
See Insert Arrangement Selection table, p. B-19
- 4 **CONTACT STYLE**
P Pin
S Socket
- 5 **ALTERNATE KEYING**
N NORMAL or A, B, C, D, E
- 6 **OPTIONAL BACKSHELL KIT (OMIT FOR NONE)**
B2 Straight strain relief (self-locking), p. B-33
R2() Straight EMI/RFI environmental, p. B-35
(Add dash number for appropriate shell size, see p. B-35)
K2 Boot adapter, p. B-47, & straight shrink boot, p. B-45
- 7 **OPTIONAL ACCESSORY KIT (OMIT FOR NONE)**
02 Protective cover

Note: See part builder in TX Series catalog (p. B-17) for more kit options.



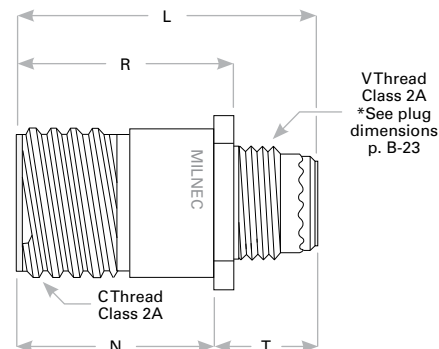
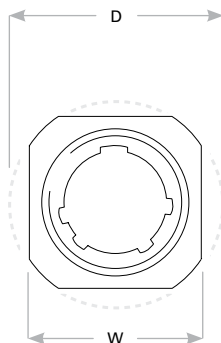
TX01 Compatibility

Compatible Brands	Mates
MIL-DTL-38999 Series III	D38999/26
Aero / Conesys	AE326
Amphenol	TV06, TVS06, CTV06, CTVS06
Deutsch	DTS26
ITT Cannon	KJA6
Souriau	8D5, 8DS06G

Receptacle Dimensions

Shell Size	Military Shell Size	W	D	L	R	N	T	C Thread Class 2A
9	A	.675 (17.1)	.812 (20.6)	1.240 (31.5)	.905 (23.0)	.820 (20.8)	.469 (11.9)	.6250-0.1P-0.3L-TS-2A
11	B	.800 (20.3)	.905 (23.0)	1.240 (31.5)	.905 (23.0)	.820 (20.8)	.469 (11.9)	.7500-0.1P-0.3L-TS-2A
13	C	.925 (23.5)	1.093 (27.8)	1.240 (31.5)	.905 (23.0)	.820 (20.8)	.469 (11.9)	.8750-0.1P-0.3L-TS-2A
15	D	1.050 (26.7)	1.219 (31.0)	1.240 (31.5)	.905 (23.0)	.820 (20.8)	.469 (11.9)	1.0000-0.1P-0.3L-TS-2A
17	E	1.238 (31.4)	1.375 (34.9)	1.240 (31.5)	.905 (23.0)	.820 (20.8)	.469 (11.9)	1.1875-0.1P-0.3L-TS-2A
19	F	1.300 (33.0)	1.469 (37.3)	1.240 (31.5)	.905 (23.0)	.820 (20.8)	.469 (11.9)	1.2500-0.1P-0.3L-TS-2A
21	G	1.425 (36.2)	1.625 (41.3)	1.240 (31.5)	.905 (23.0)	.790 (20.1)	.500 (12.7)	1.3750-0.1P-0.3L-TS-2A
23	H	1.550 (39.4)	1.750 (44.5)	1.240 (31.5)	.905 (23.0)	.790 (20.1)	.500 (12.7)	1.5000-0.1P-0.3L-TS-2A
25	J	1.675 (42.5)	1.875 (47.6)	1.240 (31.5)	.905 (23.0)	.790 (20.1)	.500 (12.7)	1.6250-0.1P-0.3L-TS-2A

Dimensions are in inches (mm).



Rev. 1301.1