

Thru-Bulkhead Receptacle

PM Series • MIL-DTL-5015 Solder Type Connectors

PM22 F 18-11 PS N - 02



- 1 **BASIC PART NUMBER**
PM22 Thru-bulkhead receptacle
- 2 **MATERIAL & FINISH**
F Aluminum, olive drab cadmium
- 3 **SHELL SIZE & INSERT ARRANGEMENT**
See Insert Arrangement Selection table, p. G-11
- 4 **CONTACT STYLE**
PS Pin / socket (non-configurable)
- 5 **INSERT ROTATION**
N Normal or W, X, Y, Z, see p. G-11 for availability
- 6 **OPTIONAL ACCESSORY KIT (OMIT FOR NONE)**
02 Protective covers (2x) + mounting gasket
03 02 kit + mounting bracket + sealing screws

Note: See part builder (p. G-10) for additional kit options.

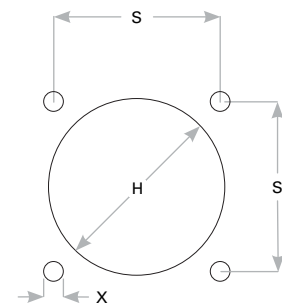
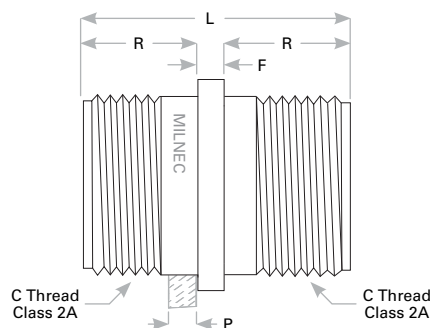
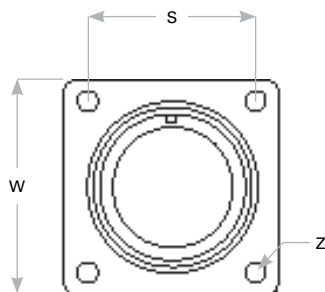
PM22 Compatibility

Compatible Brands	Mates
MIL-DTL-5015	MS3106, MS3108
Amphenol	97-3106, 97-3108
Array	AC3106, AC3108
DDK	DMS3106, DMS3108
ITT Cannon	CA3106, CA3108

Receptacle Dimensions

Shell Size	W	Z	L	R	F	C Thread Class 2A	Min Thread Length	P Max Rear Panel*	S	X	H
10SL	1.000 (25.4)	.120 (3.1)	1.563 (39.7)	.711 (18.1)	.141 (3.6)	.6250-24 UNEF	.406 (10.3)	.215 (5.5)	.719 (18.3)	.120 (3.1)	.688 (17.5)
12S	1.094 (27.8)	.120 (3.1)	1.563 (39.7)	.711 (18.1)	.141 (3.6)	.7500-20 UNEF	.406 (10.3)	.215 (5.5)	.812 (20.6)	.120 (3.1)	.812 (20.6)
14S	1.188 (30.2)	.120 (3.1)	1.563 (39.7)	.711 (18.1)	.141 (3.6)	.8750-20 UNEF	.406 (10.3)	.215 (5.5)	.906 (23.0)	.120 (3.1)	.938 (23.8)
16S	1.281 (32.5)	.120 (3.1)	1.563 (39.7)	.711 (18.1)	.141 (3.6)	1.0000-20 UNEF	.406 (10.3)	.215 (5.5)	.969 (24.6)	.120 (3.1)	1.062 (27.0)
18	1.375 (34.9)	.120 (3.1)	2.125 (54.0)	.985 (25.0)	.155 (4.0)	1.1250-18 UNEF	.625 (15.9)	.250 (6.4)	1.062 (27.0)	.120 (3.1)	1.188 (30.2)
20	1.500 (38.1)	.120 (3.1)	2.125 (54.0)	.985 (25.0)	.155 (4.0)	1.2500-18 UNEF	.625 (15.9)	.250 (6.4)	1.156 (29.4)	.120 (3.1)	1.312 (33.3)
22	1.625 (41.3)	.120 (3.1)	2.125 (54.0)	.985 (25.0)	.155 (4.0)	1.3750-18 UNEF	.625 (15.9)	.250 (6.4)	1.250 (31.8)	.120 (3.1)	1.438 (36.5)
24	1.750 (44.5)	.147 (3.7)	2.125 (54.0)	.985 (25.0)	.155 (4.0)	1.5000-18 UNEF	.625 (15.9)	.250 (6.4)	1.375 (34.9)	.147 (3.7)	1.562 (39.7)
28	2.000 (50.8)	.147 (3.7)	2.125 (54.0)	.985 (25.0)	.155 (4.0)	1.7500-18 UNS	.625 (15.9)	.250 (6.4)	1.562 (39.7)	.147 (3.7)	1.812 (46.0)
32	2.250 (57.2)	.173 (4.4)	2.125 (54.0)	.985 (25.0)	.155 (4.0)	2.0000-18 UNS	.625 (15.9)	.250 (6.4)	1.750 (44.5)	.173 (4.4)	2.062 (52.4)
36	2.500 (63.5)	.173 (4.4)	2.125 (54.0)	.985 (25.0)	.155 (4.0)	2.2500-16 UN	.625 (15.9)	.250 (6.4)	1.938 (49.2)	.173 (4.4)	2.312 (58.7)

Dimensions are in inches (mm)



Panel Cutout

Rev. 1923