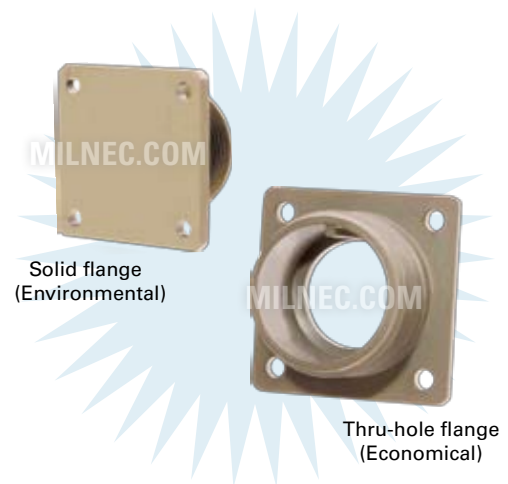


PMCD - 16 F - 02

- 1 **BASIC PART NUMBER**
PMCD Stowage receptacle (thru-hole flange)
PMCC Stowage receptacle (solid flange)
- 2 **SHELL SIZE**
 See Stowage Receptacle Dimensions table below
- 3 **MATERIAL & FINISH**
F Aluminum, olive drab cadmium
- 4 **OPTIONAL ACCESSORY KIT (OMIT FOR NONE)**
02 Protective cover + mounting gasket
03 02 kit + mounting bracket + sealing screws



Note: See part builder (p. G-10) for additional kit options.

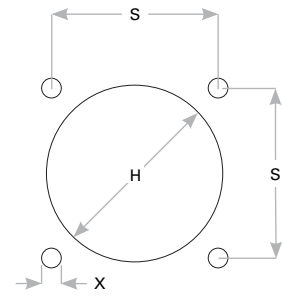
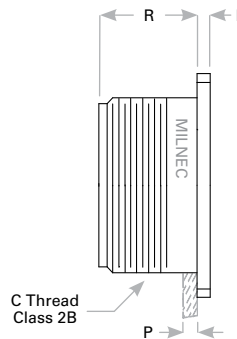
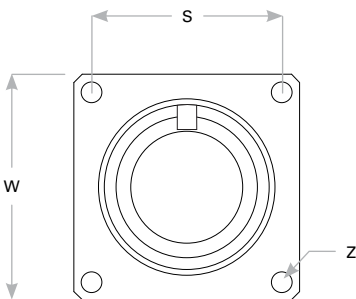
PMCD & PMCC Compatibility

| Compatible Brands | Plugs |
|---------------------|------------------|
| MIL-DTL-5015 | MS3106, MS3108 |
| Amphenol | 97-3106, 97-3108 |
| Array | AC3106, AC3108 |
| DDK | DMS3106, DMS3108 |
| ITT Cannon | CA3106, CA3108 |

Stowage Receptacle Dimensions

| Shell Size | W | S | Z | C Thread Class 2B | R | F | P Max Rear Panel* | S | X | H |
|------------|--------------|--------------|------------|-------------------|-------------|------------|-------------------|--------------|------------|--------------|
| 10S | 1.031 (26.2) | .719 (18.3) | .130 (3.3) | .625-24 UNEF | .593 (15.1) | .156 (4.0) | .125 (3.2) | .719 (18.3) | .120 (3.1) | .688 (17.5) |
| 12S | 1.125 (28.6) | .812 (20.6) | .130 (3.3) | .750-20 UNEF | .593 (15.1) | .156 (4.0) | .125 (3.2) | .812 (20.6) | .120 (3.1) | .812 (20.6) |
| 14S | 1.219 (31.0) | .906 (23.0) | .130 (3.3) | .875-20 UNEF | .593 (15.1) | .156 (4.0) | .125 (3.2) | .906 (23.0) | .120 (3.1) | .938 (23.8) |
| 16S | 1.312 (33.3) | .969 (24.6) | .130 (3.3) | 1.000-20 UNEF | .593 (15.1) | .156 (4.0) | .125 (3.2) | .969 (24.6) | .120 (3.1) | 1.062 (27.0) |
| 18 | 1.406 (35.7) | 1.062 (27.0) | .130 (3.3) | 1.125-18 UNEF | .781 (19.8) | .203 (5.2) | .125 (3.2) | 1.062 (27.0) | .120 (3.1) | 1.188 (30.2) |
| 20 | 1.531 (38.9) | 1.156 (29.4) | .130 (3.3) | 1.250-18 UNEF | .781 (19.8) | .203 (5.2) | .125 (3.2) | 1.156 (29.4) | .120 (3.1) | 1.312 (33.3) |
| 22 | 1.656 (42.1) | 1.250 (31.8) | .130 (3.3) | 1.375-18 UNEF | .781 (19.8) | .203 (5.2) | .125 (3.2) | 1.250 (31.8) | .120 (3.1) | 1.438 (36.5) |
| 24 | 1.781 (45.2) | 1.375 (34.9) | .157 (4.0) | 1.500-18 UNEF | .843 (21.4) | .203 (5.2) | .125 (3.2) | 1.375 (34.9) | .147 (3.7) | 1.562 (39.7) |
| 28 | 2.031 (51.6) | 1.562 (39.7) | .157 (4.0) | 1.750-18 UNS | .843 (21.4) | .203 (5.2) | .125 (3.2) | 1.562 (39.7) | .147 (3.7) | 1.812 (46.0) |
| 32 | 2.281 (57.9) | 1.750 (44.5) | .183 (4.6) | 2.000-18 UNS | .906 (23.0) | .359 (9.1) | .125 (3.2) | 1.750 (44.5) | .173 (4.4) | 2.062 (52.4) |
| 36 | 2.531 (64.3) | 1.938 (49.2) | .183 (4.6) | 2.250-16 UN | .906 (23.0) | .359 (9.1) | .125 (3.2) | 1.938 (49.2) | .173 (4.4) | 2.312 (58.7) |

Dimensions are in inches (mm). * Max panel thickness applies only to rear mount applications to ensure proper coupling clearance.



Panel Cutout