

Jam Nut Receptacle (Hermetic)

TX Series • MIL-DTL-38999 Series III Style Connectors

TX13 HA 13-4 P N - 02



- 1
- 2
- 3
- 4
- 5
- 6

- 1 **BASIC PART NUMBER**
TX13 Hermetic jam nut receptacle
 Helium leakage <math> < 1.0 \times 10^{-7}</math> cc³/sec at
 15 psi (1.1 kg/cm²). Insert rated to 14,000 psi
 (984 kg/cm²) when precision welded or soldered.
- 2 **MATERIAL & FINISH**
H Carbon steel, tin plating over nickel
HA 316L type stainless steel, passivated
HB 316L type stainless steel, electrodeposited nickel
HG Same as HB, for space-grade applications
- 3 **SHELL SIZE & INSERT ARRANGEMENT**
 See Insert Arrangement Selection table, p. B-19
 (Verify hermetic availability on table)
- 4 **CONTACT STYLE**
P Pin only, gold plated, solder cup termination
H* Socket, gold plated, solder cup termination
(PC tail contacts available, contact your authorized distributor)
- 5 **ALTERNATE KEYING**
N NORMAL or A, B, C, D, E
- 6 **OPTIONAL ACCESSORY KIT (OMIT FOR NONE)**
02 Protective cover

* Please consult an authorized distributor for lead time and minimum quantity requirements.

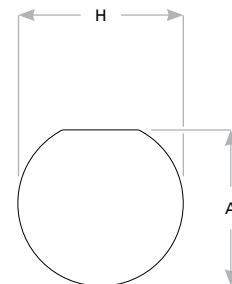
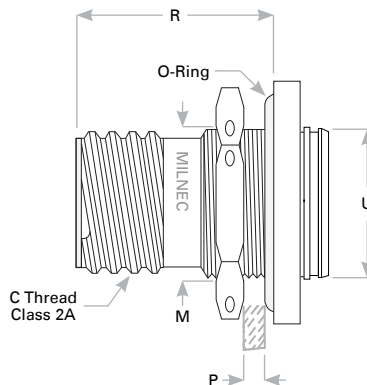
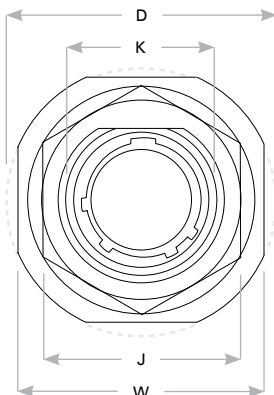
TX13 Compatibility

| Compatible Brands | Mates |
|--------------------------|----------------------------|
| MIL-DTL-38999 Series III | D38999/26 |
| Aero / Conesys | AE326 |
| Amphenol | TV06, TVS06, CTV06, CTVS06 |
| Deutsch | DTS26 |
| ITT Cannon | KJA6 |
| Souriau | 8D5, 8DS06G |

Receptacle Dimensions

| Shell Size | Military Shell Size | W | D | K | J Max | R | M | U | C Thread Class 2A | P Max Rear Panel† | H | A |
|------------|---------------------|--------------|--------------|--------------|--------------|-------------|--------------|--------------|---------------------|-------------------|--------------|--------------|
| 9 | A | 1.062 (27.0) | 1.199 (30.5) | .697 (17.7) | .945 (24.0) | .871 (22.1) | .669 (17.0) | .642 (16.3) | .6250-0.1P-0.3L-TS | .125 (3.2) | .700 (17.8) | .670 (17.0) |
| 11 | B | 1.250 (31.8) | 1.386 (35.2) | .822 (20.9) | 1.063 (27.0) | .871 (22.1) | .769 (19.5) | .766 (19.5) | .7500-0.1P-0.3L-TS | .125 (3.2) | .825 (21.0) | .771 (19.6) |
| 13 | C | 1.375 (34.9) | 1.511 (38.4) | 1.007 (25.6) | 1.260 (32.0) | .878 (22.3) | .955 (24.3) | .892 (22.7) | .8750-0.1P-0.3L-TS | .125 (3.2) | 1.010 (25.7) | .955 (24.3) |
| 15 | D | 1.500 (38.1) | 1.636 (41.6) | 1.134 (28.8) | 1.417 (36.0) | .878 (22.3) | 1.084 (27.5) | 1.018 (25.9) | 1.0000-0.1P-0.3L-TS | .125 (3.2) | 1.135 (28.8) | 1.085 (27.6) |
| 17 | E | 1.625 (41.3) | 1.761 (44.7) | 1.259 (32.0) | 1.457 (37.0) | .878 (22.3) | 1.208 (30.7) | 1.142 (29.0) | 1.1875-0.1P-0.3L-TS | .125 (3.2) | 1.260 (32.0) | 1.210 (30.7) |
| 19 | F | 1.182 (30.0) | 1.949 (49.5) | 1.384 (35.2) | 1.614 (41.0) | .878 (22.3) | 1.333 (33.9) | 1.268 (32.2) | 1.2500-0.1P-0.3L-TS | .125 (3.2) | 1.385 (35.2) | 1.335 (33.9) |
| 21 | G | 1.938 (49.2) | 2.073 (52.7) | 1.507 (38.3) | 1.811 (46.0) | .878 (22.3) | 1.459 (37.1) | 1.392 (35.4) | 1.3750-0.1P-0.3L-TS | .125 (3.2) | 1.510 (38.4) | 1.460 (37.1) |
| 23 | H | 2.062 (52.4) | 2.199 (55.9) | 1.634 (41.5) | 1.969 (50.0) | .878 (22.3) | 1.575 (40.0) | 1.518 (38.6) | 1.5000-0.1P-0.3L-TS | .125 (3.2) | 1.635 (41.5) | 1.585 (40.3) |
| 25 | J | 2.188 (55.6) | 2.323 (59.0) | 1.759 (44.7) | 2.017 (51.2) | .878 (22.3) | 1.709 (43.4) | 1.642 (41.7) | 1.6250-0.1P-0.3L-TS | .125 (3.2) | 1.760 (44.7) | 1.710 (43.4) |

Dimensions are in inches (mm). † Max panel thickness will ensure proper coupling clearance.



Panel Cutout

Rev. 2218