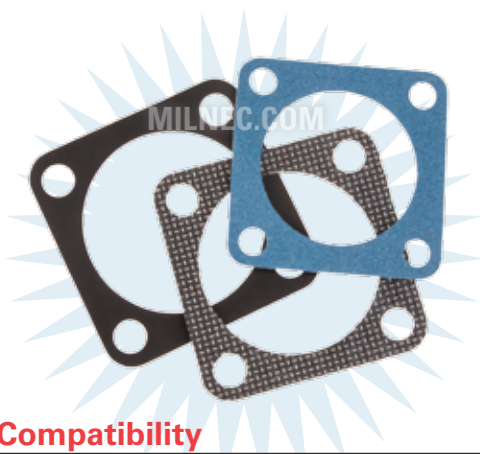


Mounting Gasket

TX Series • MIL-DTL-38999 Series III Style Connectors



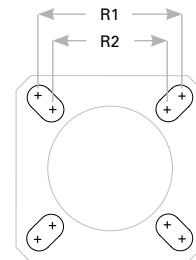
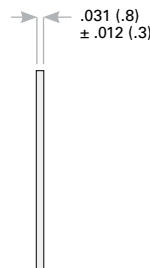
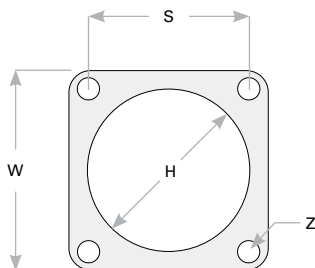
TXGE Compatibility

Compatible Brands	Receptacles
MIL-DTL-38999 Series III	D38999/20
Aero / Conesys	AE320
Amphenol	TVP00, TVPS00, CTVP00, CTVPS00
Deutsch	DTS20
ITT Cannon	KJA0
Souriau	8D0

Gasket Dimensions

Shell Size	Military Shell Size	W	S	Z	H	Mounting Hole
9	A	1.000 (25.4)	.719 (18.3)	.172 (4.4)	.625 (15.9)	R1
		.875 (22.2)	.594 (15.1)	.172 (4.4)	.500 (12.7)	R2
11	B	1.094 (27.8)	.813 (20.7)	.172 (4.4)	.750 (19.1)	R1
		1.000 (25.4)	.719 (18.3)	.172 (4.4)	.625 (15.9)	R2
13	C	1.188 (30.2)	.906 (23.0)	.172 (4.4)	.875 (22.2)	R1
		1.094 (27.8)	.813 (20.7)	.172 (4.4)	.750 (19.1)	R2
15	D	1.281 (32.5)	.969 (24.6)	.172 (4.4)	1.000 (25.4)	R1
		1.188 (30.2)	.906 (23.0)	.172 (4.4)	.875 (22.2)	R2
17	E	1.375 (34.9)	1.063 (27.0)	.203 (5.2)	1.187 (30.1)	R1
		1.281 (32.5)	.969 (24.6)	.172 (4.4)	1.000 (25.4)	R2
19	F	1.500 (38.1)	1.156 (29.4)	.203 (5.2)	1.250 (31.8)	R1
		1.375 (34.9)	1.063 (27.0)	.203 (5.2)	1.125 (28.6)	R2
21	G	1.625 (41.3)	1.250 (31.8)	.203 (5.2)	1.375 (34.9)	R1
		1.500 (38.1)	1.156 (29.4)	.203 (5.2)	1.250 (31.8)	R2
23	H	1.750 (44.5)	1.375 (34.9)	.203 (5.2)	1.500 (38.1)	R1
		1.625 (41.3)	1.250 (31.8)	.203 (5.2)	1.375 (34.9)	R2
25	J	1.785 (45.3)	1.500 (38.1)	.152 (3.9)	1.625 (41.3)	R1*
		1.750 (44.5)	1.375 (34.9)	.203 (5.2)	1.500 (38.1)	R2

Dimensions are in inches (mm). *TXGS, TXGL, and TXGD not available in -25R1 mounting size.



TXGE - 15 R1

1 2 3

1 BASIC PART NUMBER

- TXGE** Neoprene environmental (weather resistant)
Temp. range -40°F to +230°F (-40°C to +110°C)
- TXGS** Conductive EMI-RFI neoprene, Ni-Cu alloy mesh
Temp. range -40°F to +230°F (-40°C to +110°C)
- TXGL** Fluorosilicone (jet fuel & oil resistant)
Temp. range -70°F to +392°F (-56°C to +200°C)
Per MIL-DTL-25988, Class 1, Grade 6
- TXGD** Conductive EMI-RFI fluorosilicone, Al-Ag filled
Temp. range -70°F to +392°F (-56°C to +200°C)
Shielding effectiveness at 90 dB @ 10 GHz
Per MIL-DTL-83528, Type D

2 SHELL SIZE

See Gasket Dimensions table below

3 MOUNTING HOLE

- R1** For mounting connector flange behind panel
- R2** For mounting connector flange on front panel

TX