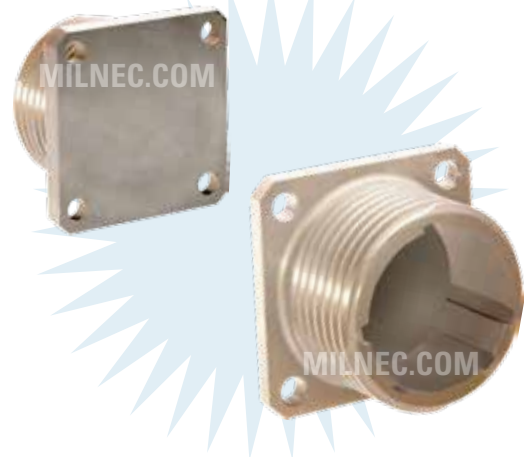


QSCD - C 20

- 1 **BASIC PART NUMBER**
QSCD Stowage receptacle
- 2 **MATERIAL & FINISH**
C Aluminum, conductive (olive drab cadmium)
N Aluminum, non-conductive (anodized)
- 3 **SHELL SIZE**
See Stowage Receptacle Dimensions table below



Note: See part builder (p. W-9) for additional kit options.

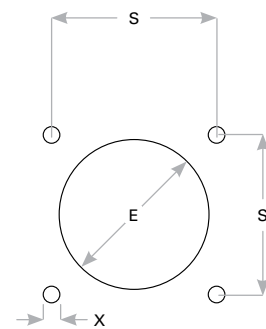
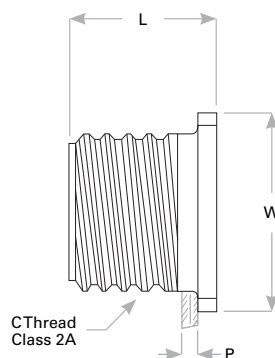
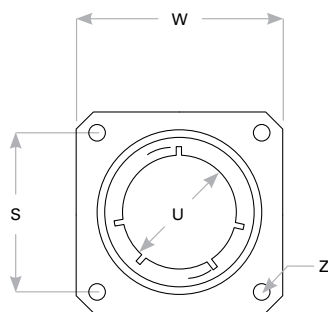
QSCD Compatibility

Compatible Brands	Mates
MIL-DTL-22992 QWLD	MS17344
Amphenol	10-1946, 88-1946
ITT Cannon	CWLD06

Stowage Receptacle Dimensions

Shell Size	W	U	Z	C Thread Class 2A	L	P Max Rear Panel	S	X	E Rear Mount
12	1.188 (30.2)	.567 (14.4)	.150 (3.8)	.8750-0.1P-0.2L-DS	.938 (23.8)	.156 (4.0)	.906 (23.0)	.150 (3.8)	.954 (24.2)
14	1.281 (32.5)	.692 (17.6)	.150 (3.8)	1.0000-0.1P-0.2L-DS	.938 (23.8)	.156 (4.0)	.969 (24.6)	.150 (3.8)	1.079 (27.4)
16	1.375 (34.9)	.817 (20.8)	.150 (3.8)	1.1250-0.1P-0.2L-DS	.938 (23.8)	.125 (3.2)	1.062 (27.0)	.150 (3.8)	1.204 (30.6)
18	1.500 (38.1)	.942 (23.9)	.177 (4.5)	1.2500-0.1P-0.2L-DS	.953 (24.2)	.125 (3.2)	1.156 (29.4)	.177 (4.5)	1.329 (33.8)
20	1.625 (41.3)	1.068 (27.1)	.177 (4.5)	1.3750-0.1P-0.2L-DS	.953 (24.2)	.125 (3.2)	1.250 (31.8)	.177 (4.5)	1.454 (36.9)
22	1.750 (44.5)	1.192 (30.3)	.177 (4.5)	1.5000-0.1P-0.2L-DS	.953 (24.2)	.125 (3.2)	1.375 (34.9)	.177 (4.5)	1.579 (40.1)
24	2.000 (50.8)	1.317 (33.5)	.177 (4.5)	1.7500-0.1P-0.2L-DS	1.047 (26.6)	.187 (4.7)	1.562 (39.7)	.177 (4.5)	1.829 (46.5)
28	2.250 (57.2)	1.536 (39.0)	.177 (4.5)	2.0000-0.1P-0.2L-DS	1.047 (26.6)	.187 (4.7)	1.750 (44.5)	.177 (4.5)	2.079 (52.8)
32	2.500 (63.5)	1.786 (45.4)	.209 (5.3)	2.2500-0.1P-0.2L-DS	1.110 (28.2)	.250 (6.4)	1.938 (49.2)	.209 (5.3)	2.329 (59.2)
36	2.750 (69.9)	2.005 (50.9)	.209 (5.3)	2.5000-0.1P-0.2L-DS	1.110 (28.2)	.218 (5.5)	2.188 (55.6)	.209 (5.3)	2.579 (65.5)

Dimensions are in inches (mm).



Panel Cutout

SD