

Strain Relief Backshell

QS Series • MIL-DTL-22992 QWLD Type Connectors



QSB2 - 20 C

- 1 **BASIC PART NUMBER**
QSB2 Strain relief backshell & bushing
- 2 **SHELL SIZE**
See Strain Relief Dimensions table below
- 3 **MATERIAL & FINISH**
C Aluminum, conductive (olive drab cadmium)
N Aluminum, non-conductive (anodized)

Note: QSAE adapter is required to couple QSB2 backshell. QSB2 will not couple directly to connector accessory threads.

QSB2 Compatibility

Compatible Brands	Connectors
MIL-DTL-22992 QWLD	MS17343, MS17344, MS17345, MS17347
Amphenol	10-1940, 10-1941, 10-1943, 10-1946, 88-1940, 88-1941, 88-1943, 88-1946
ITT Cannon	CWLD00, CWLD01, CWLD06, CWLD07

Strain Relief Dimensions

Shell Size	B Max	C Thread Class 2B	L ¹	Bushing Included	CC Cable Clearance	
					Free	Closed
12	.906 (23.0)	.6250-24UNEF	1.375 (34.9)	QSRB34-4	.302 (7.7)	.094 (2.4)
14	1.031 (26.2)	.7500-20UNEF	1.375 (34.9)	QSRB34-6	.428 (10.9)	.230 (5.8)
16	1.125 (28.6)	.8750-20UNEF	1.375 (34.9)	QSRB34-8	.515 (13.1)	.316 (8.0)
18	1.234 (31.3)	1.0000-20UNEF	1.437 (36.5)	QSRB34-10	.614 (15.6)	.378 (9.6)
20	1.484 (37.7)	1.18750-18UNEF	1.437 (36.5)	QSRB34-12	.738 (18.8)	.445 (11.3)
22	1.484 (37.7)	1.1875-18UNEF	1.437 (36.5)	QSRB34-12	.738 (18.8)	.445 (11.3)
24	1.671 (42.4)	1.4375-18UNEF	1.562 (39.7)	QSRB34-12, QSRB34-16	.926 (23.5)	.611 (15.5)
28	1.671 (42.4)	1.4375-18UNEF	1.562 (39.7)	QSRB34-12, QSRB34-16	.926 (23.5)	.611 (15.5)
32	2.188 (55.6)	1.7500-18UNS	1.812 (46.0)	QSRB34-16, QSRB34-20	1.200 (30.5)	.922 (23.4)
36	2.344 (59.5)	2.0000-18UNS	2.062 (52.4)	QSRB34-20, QSRB34-24	1.363 (34.6)	.922 (23.4)

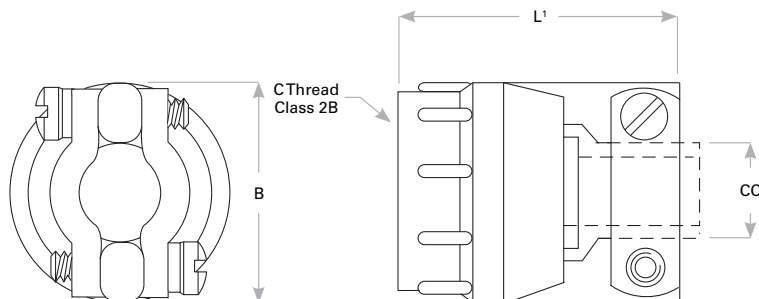
Dimensions are in inches (mm).

Bushing Dimensions

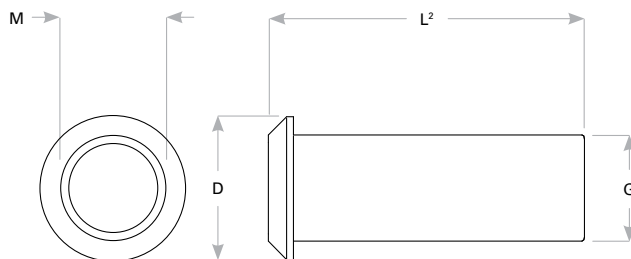
Bushing Part No	M Dia	D Dia	L ²	G Dia
QSRB34-3	.130 (3.3)	.374 (9.5)	2.875 (73.0)	.210 (5.3)
QSRB34-4	.220 (5.6)	.500 (12.7)	2.750 (69.9)	.302 (7.7)
QSRB34-6	.312 (7.9)	.614 (15.6)	2.625 (66.7)	.427 (10.9)
QSRB34-8	.437 (11.1)	.739 (18.8)	2.500 (63.5)	.552 (14.0)
QSRB34-10	.562 (14.3)	.889 (22.6)	2.375 (60.3)	.615 (15.6)
QSRB34-12	.625 (15.9)	1.084 (27.5)	2.250 (57.2)	.740 (18.8)
QSRB34-16	.750 (19.1)	1.309 (33.3)	2.125 (54.0)	.927 (23.6)
QSRB34-20	.937 (23.8)	1.592 (40.4)	2.000 (50.8)	1.240 (31.5)
QSRB34-24	1.250 (31.8)	1.842 (46.8)	1.875 (47.6)	1.365 (34.7)

Dimensions are in inches (mm).

Strain Relief



Bushing



Rev. 1921