

Wall Mount Receptacle

QS Series • MIL-DTL-22992 QWLD Type Connectors



QS00 Cross-Reference & Compatibility

Compatible Brands	Equivalents	Mates
MIL-DTL-22992 QWLD	MS17343	MS17344
Amphenol	10-1940XX	10-1946XX
ITT Cannon	CWLD00	CWLD06

QS00 C 20-4 P N - E2(033) - 02

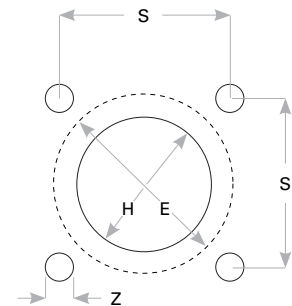
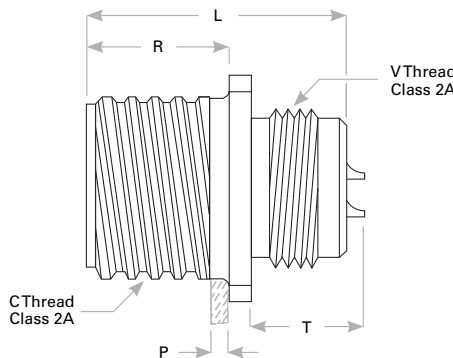
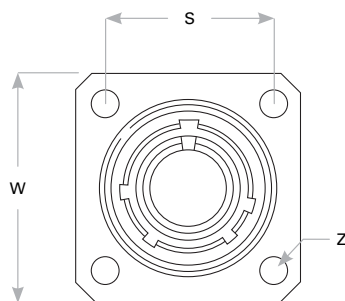
- 1 **BASIC PART NUMBER**
QS00 Solder wall mount receptacle
QC00 Crimp wall mount receptacle
- 2 **MATERIAL & FINISH**
C Aluminum, conductive (olive drab cadmium)
N Aluminum, non-conductive (anodized)
- 3 **SHELL SIZE & INSERT PATTERN**
 See Insert Arrangement Selection table, p. W-10
- 4 **CONTACT STYLE**
P Pin
S Socket
- 5 **ALTERNATE ROTATION**
N NORMAL or W, X, Y, Z
- 6 **OPTIONAL BACKSHELL KIT (OMIT FOR NONE)**
B2 Strain relief & adapter, p. W-25
E2 Environmental backshell, p. W-27
 (Add dash number for appropriate shell size, see p. W-27)
- 7 **OPTIONAL ACCESSORY KIT (OMIT FOR NONE)**
02 Protective cover + mounting gasket
03 02 kit + mounting bracket + sealing screws

Note: See part builder (p. W-9) for additional kit options.

Receptacle Dimensions

Shell Size	W	C Thread Class 2A	L	R	T Max	V Thread Class 2A-LH	P Max Rear Panel	S	Z	H Front Mount	E Rear Mount
12	1.188 (30.2)	.8750-0.1P-0.2L-DS	1.577 (40.1)	.797 (20.2)	.700 (17.8)	.7500-20UNEF	.156 (4.0)	.906 (23.0)	.150 (3.8)	.800 (20.3)	.954 (24.2)
14	1.281 (32.5)	1.0000-0.1P-0.2L-DS	1.577 (40.1)	.797 (20.2)	.700 (17.8)	.8750-20UNEF	.156 (4.0)	.969 (24.6)	.150 (3.8)	.925 (23.5)	1.079 (27.4)
16	1.375 (34.9)	1.1250-0.1P-0.2L-DS	1.577 (40.1)	.797 (20.2)	.700 (17.8)	1.0000-20UNEF	.125 (3.2)	1.062 (27.0)	.150 (3.8)	1.050 (26.7)	1.204 (30.6)
18	1.500 (38.1)	1.2500-0.1P-0.2L-DS	1.578 (40.1)	.797 (20.2)	.686 (17.4)	1.1250-18UNEF	.125 (3.2)	1.156 (29.4)	.177 (4.5)	1.175 (29.8)	1.329 (33.8)
20	1.625 (41.3)	1.3750-0.1P-0.2L-DS	1.578 (40.1)	.797 (20.2)	.686 (17.4)	1.2500-18UNEF	.125 (3.2)	1.250 (31.8)	.177 (4.5)	1.300 (33.0)	1.454 (36.9)
22	1.750 (44.5)	1.5000-0.1P-0.2L-DS	1.578 (40.1)	.797 (20.2)	.686 (17.4)	1.3750-18UNEF	.125 (3.2)	1.375 (34.9)	.177 (4.5)	1.425 (36.2)	1.579 (40.1)
24	2.000 (50.8)	1.7500-0.1P-0.2L-DS	1.641 (41.7)	.859 (21.8)	.585 (14.9)	1.6250-18UNEF	.187 (4.7)	1.562 (39.7)	.177 (4.5)	1.675 (42.5)	1.829 (46.5)
28	2.250 (57.2)	2.0000-0.1P-0.2L-DS	1.641 (41.7)	.859 (21.8)	.591 (15.0)	1.8750-16UN	.187 (4.7)	1.750 (44.5)	.177 (4.5)	1.925 (48.9)	2.079 (52.8)
32	2.500 (63.5)	2.2500-0.1P-0.2L-DS	1.639 (41.7)	.922 (23.4)	.528 (13.4)	2.0625-16UNS	.250 (6.4)	1.938 (49.2)	.209 (5.3)	2.1125 (53.7)	2.329 (59.2)
36	2.750 (69.9)	2.5000-0.1P-0.2L-DS	1.639 (41.7)	.922 (23.4)	.528 (13.4)	2.3125-16UNS	.218 (5.5)	2.188 (55.6)	.209 (5.3)	2.3625 (60.0)	2.579 (65.5)

Dimensions are in inches (mm).



Panel Cutout

Rev. 1642