

# MS17344 Connector Type Datasheet

QS Series • MIL-DTL-22992 QWLD Type Connectors



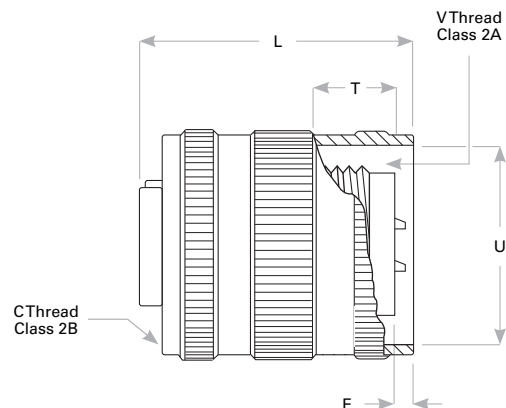
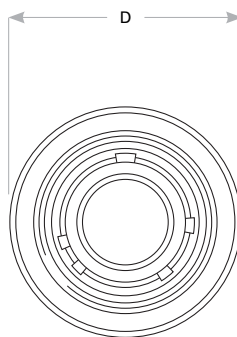
## QS06 Cross-Reference & Compatibility

Compatible Brands	Equivalents	Mates
MIL-DTL-22992 QWLD	MS17344	MS17343, MS17345, MS17346, MS17347, MS17348
Amphenol	10-1946, 88-1946	10-1940, 10-1941, 10-1942, 10-1943, 10-1949, 88-1940, 88-1941, 88-1942, 88-1943, 88-1949
ITT Cannon	CWLD06	CWLD00, CWLD01, CWLD02, CWLD07, CWLD08

## Plug Dimensions

Shell Size	D Max	C Thread Class 2B	L	T	E	U	V Thread Class 2A-LH
12	1.156 (29.4)	.8750-0.1P-0.2L-DS	1.534 (39.0)	.519 (13.2)	.030 (0.8)	.985 (25.0)	.7500-20UNEF
14	1.281 (32.5)	1.0000-0.1P-0.2L-DS	1.517 (38.5)	.519 (13.2)	.013 (0.3)	1.109 (28.2)	.8750-20UNEF
16	1.469 (37.3)	1.1250-0.1P-0.2L-DS	1.595 (40.5)	.519 (13.2)	.091 (2.3)	1.235 (31.4)	1.0000-20UNEF
18	1.563 (39.7)	1.2500-0.1P-0.2L-DS	1.720 (43.7)	.519 (13.2)	.216 (5.5)	1.359 (34.5)	1.1250-18UNEF
20	1.688 (42.9)	1.3750-0.1P-0.2L-DS	1.720 (43.7)	.519 (13.2)	.216 (5.5)	1.485 (37.7)	1.2500-18UNEF
22	1.844 (46.8)	1.5000-0.1P-0.2L-DS	1.720 (43.7)	.519 (13.2)	.216 (5.5)	1.609 (40.9)	1.3750-18UNEF
24	2.094 (53.2)	1.7500-0.1P-0.2L-DS	1.750 (44.5)	.519 (13.2)	.184 (4.7)	1.859 (47.2)	1.6250-18UNEF
28	2.344 (59.5)	2.0000-0.1P-0.2L-DS	1.750 (44.5)	.519 (13.2)	.184 (4.7)	2.109 (53.6)	1.8750-16UN
32	2.594 (65.9)	2.2500-0.1P-0.2L-DS	1.831 (46.5)	.525 (13.3)	.190 (4.8)	2.359 (59.9)	2.0625-16UNS
36	2.844 (72.2)	2.5000-0.1P-0.2L-DS	1.875 (47.6)	.525 (13.3)	.234 (5.9)	2.609 (66.3)	2.3125-16UNS

Dimensions are in inches (mm).



## QS06 C 24-27 S N - E2(042) - 01

- 1 **BASIC PART NUMBER**  
**QS06** Solder plug  
**QC06** Crimp plug
- 2 **MATERIAL & FINISH**  
**C** Aluminum, conductive (environmental)  
**CP** Aluminum, conductive (pressurized)  
**N** Aluminum, non-conductive (environmental)
- 3 **SHELL SIZE & INSERT PATTERN**  
 See Insert Arrangement Selection table, p. W-10
- 4 **CONTACT STYLE**  
**P** Pin  
**S** Socket
- 5 **ALTERNATE ROTATION**  
**N** NORMAL or W, X, Y, Z
- 6 **OPTIONAL BACKSHELL KIT (OMIT FOR NONE)**  
**B2** Strain relief & adapter, p. W-25  
**E2** Environmental backshell, p. W-27  
 (Add dash number for appropriate shell size, see p. W-27)
- 7 **OPTIONAL ACCESSORY KIT (OMIT FOR NONE)**  
**01** Protective cover

Note: See part builder (p. W-9) for additional kit options.