

MS17345 Connector Type Datasheet

QS Series • MIL-DTL-22992 QWLD Type Connectors

QS01 C 18-11 S N - E2(015) - 02

- 1 **BASIC PART NUMBER**
QS01 Solder cable mount receptacle
QC01 Crimp cable mount receptacle
- 2 **MATERIAL & FINISH**
C Aluminum, conductive (environmental)
CP Aluminum, conductive (pressurized)
N Aluminum, non-conductive (environmental)
- 3 **SHELL SIZE & INSERT PATTERN**
 See Insert Arrangement Selection table, p. W-10
- 4 **CONTACT STYLE**
P Pin
S Socket
- 5 **ALTERNATE ROTATION**
N NORMAL or W, X, Y, Z
- 6 **OPTIONAL BACKSHELL KIT (OMIT FOR NONE)**
B2 Strain relief & adapter, p. W-25
E2 Environmental backshell, p. W-27
 (Add dash number for appropriate shell size, see p. W-27)
- 7 **OPTIONAL ACCESSORY KIT (OMIT FOR NONE)**
02 Protective cover



QS01 Cross-Reference & Compatibility

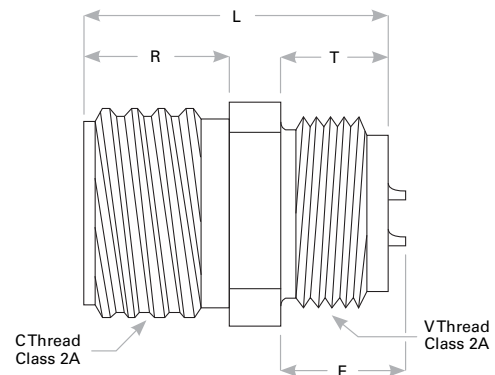
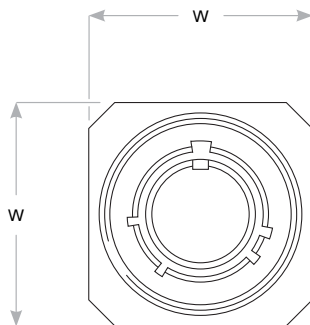
Compatible Brands	Equivalents	Mates
MIL-DTL-22992 QWLD	MS17345	MS17344
Amphenol	10-1941, 88-1941	10-1946, 88-1946
ITT Cannon	CWLD01	QWLD06

Note: See part builder (p. W-9) for additional kit options.

Receptacle Dimensions

Shell Size	W	C Thread Class 2A	L	R	T	E	V Thread Class 2A-LH
12	1.000 (25.4)	.8750-0.1P-0.2L-DS	1.579 (40.1)	.688 (17.5)	.641 (16.3)	.696 (17.7)	.7500-20UNEF
14	1.094 (27.8)	1.0000-0.1P-0.2L-DS	1.579 (40.1)	.688 (17.5)	.641 (16.3)	.696 (17.7)	.8750-20UNEF
16	1.281 (32.5)	1.1250-0.1P-0.2L-DS	1.579 (40.1)	.688 (17.5)	.641 (16.3)	.696 (17.7)	1.0000-20UNEF
18	1.375 (34.9)	1.2500-0.1P-0.2L-DS	1.582 (40.2)	.703 (17.9)	.625 (15.9)	.680 (17.3)	1.1250-18UNEF
20	1.500 (38.1)	1.3750-0.1P-0.2L-DS	1.582 (40.2)	.703 (17.9)	.625 (15.9)	.680 (17.3)	1.2500-18UNEF
22	1.625 (41.3)	1.5000-0.1P-0.2L-DS	1.582 (40.2)	.703 (17.9)	.625 (15.9)	.680 (17.3)	1.3750-18UNEF
24	1.875 (47.6)	1.7500-0.1P-0.2L-DS	1.641 (41.7)	.766 (19.5)	.625 (15.9)	.617 (15.7)	1.6250-18UNEF
28	2.125 (54.0)	2.0000-0.1P-0.2L-DS	1.641 (41.7)	.766 (19.5)	.625 (15.9)	.617 (15.7)	1.8750-16UN
32	2.375 (60.3)	2.2500-0.1P-0.2L-DS	1.641 (41.7)	.703 (17.9)	.563 (14.3)	.555 (14.1)	2.0625-16UN
36	2.625 (66.7)	2.5000-0.1P-0.2L-DS	1.641 (41.7)	.703 (17.9)	.563 (14.3)	.555 (14.1)	2.3125-16UN

Dimensions are in inches (mm).



Rev. 1923

SD