

MS17346 Connector Type Datasheet

QS Series • MIL-DTL-22992 QWLD Type Connectors

QS02 C 24-22 P N - 03

- 1 **BASIC PART NUMBER**
QS02 Solder box mount receptacle
QC02 Crimp box mount receptacle
- 2 **MATERIAL & FINISH**
C Aluminum, conductive (environmental)
CP Aluminum, conductive (pressurized)
N Aluminum, non-conductive (environmental)
- 3 **SHELL SIZE & INSERT PATTERN**
 See Insert Arrangement Selection table, p. W-10
- 4 **CONTACT STYLE**
P Pin
S Socket
- 5 **ALTERNATE ROTATION**
N NORMAL or W, X, Y, Z
- 6 **OPTIONAL ACCESSORY KIT (OMIT FOR NONE)**
02 Protective cover + mounting gasket
03 02 kit + mounting bracket + sealing screws

Note: See part builder (p. W-9) for additional kit options.



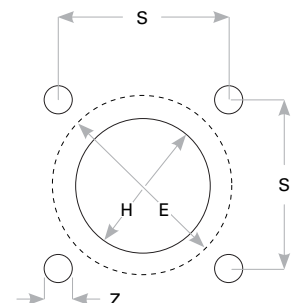
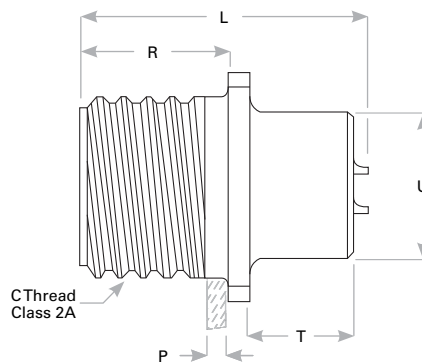
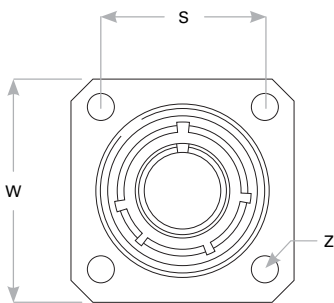
QS02 Cross-Reference & Compatibility

Compatible Brands	Equivalents	Mates
MIL-DTL-22992 QWLD	MS17346	MS17344
Amphenol	10-1942, 88-1942	10-1946, 88-1946
ITT Cannon	CWLD02	CWLD06

Receptacle Dimensions

Shell Size	W	C Thread Class 2A	L	R	T	U	P Max Rear Panel	S	Z	H Front Mount	E Rear Mount
12	1.188 (30.2)	.8750-0.1P-0.2L-DS	1.638 (41.6)	.797 (20.2)	.640 (16.3)	.640 (16.3)	.156 (4.0)	.906 (23.0)	.150 (3.8)	.645 (16.4)	.954 (24.2)
14	1.281 (32.5)	1.0000-0.1P-0.2L-DS	1.638 (41.6)	.797 (20.2)	.640 (16.3)	.765 (19.4)	.156 (4.0)	.969 (24.6)	.150 (3.8)	.770 (19.6)	1.079 (27.4)
16	1.375 (34.9)	1.1250-0.1P-0.2L-DS	1.638 (41.6)	.797 (20.2)	.640 (16.3)	.890 (22.6)	.125 (3.2)	1.062 (27.0)	.150 (3.8)	.895 (22.7)	1.283 (32.6)
18	1.500 (38.1)	1.2500-0.1P-0.2L-DS	1.639 (41.6)	.797 (20.2)	.625 (15.9)	1.015 (25.8)	.125 (3.2)	1.156 (29.4)	.177 (4.5)	1.020 (25.9)	1.329 (33.8)
20	1.625 (41.3)	1.3750-0.1P-0.2L-DS	1.639 (41.6)	.797 (20.2)	.625 (15.9)	1.171 (29.7)	.125 (3.2)	1.250 (31.8)	.177 (4.5)	1.176 (29.9)	1.454 (36.9)
22	1.750 (44.5)	1.5000-0.1P-0.2L-DS	1.639 (41.6)	.797 (20.2)	.625 (15.9)	1.296 (32.9)	.125 (3.2)	1.375 (34.9)	.177 (4.5)	1.301 (33.1)	1.579 (40.1)
24	2.000 (50.8)	1.7500-0.1P-0.2L-DS	1.632 (41.5)	.859 (21.8)	.594 (15.1)	1.421 (36.1)	.187 (4.7)	1.562 (39.7)	.177 (4.5)	1.426 (36.2)	1.829 (46.5)
28	2.250 (57.2)	2.0000-0.1P-0.2L-DS	1.632 (41.5)	.859 (21.8)	.594 (15.1)	1.625 (41.3)	.187 (4.7)	1.750 (44.5)	.177 (4.5)	1.630 (41.4)	2.079 (52.8)
32	2.500 (63.5)	2.2500-0.1P-0.2L-DS	1.638 (41.6)	.922 (23.4)	.531 (13.5)	1.891 (48.0)	.250 (6.4)	1.938 (49.2)	.209 (5.3)	1.896 (48.2)	2.329 (59.2)
36	2.750 (69.9)	2.5000-0.1P-0.2L-DS	1.638 (41.6)	.922 (23.4)	.531 (13.5)	2.078 (52.8)	.218 (5.5)	2.188 (55.6)	.209 (5.3)	2.083 (52.9)	2.579 (65.5)

Dimensions are in inches (mm).



Panel Cutout

Rev. 1923

SD