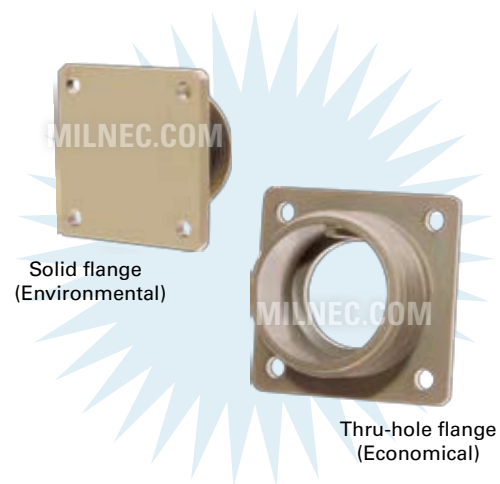


TMCD - 16 W - 02

- 1 **BASIC PART NUMBER**
TMCD Stowage receptacle (thru-hole flange)
TMCC Stowage receptacle (solid flange)
- 2 **SHELL SIZE**
 See Stowage Receptacle Dimensions table below
- 3 **MATERIAL & FINISH**
W Aluminum, olive drab cadmium
N Aluminum, electroless nickel
- 4 **OPTIONAL ACCESSORY KIT (OMIT FOR NONE)**
02 Protective cover + mounting gasket
03 02 kit + mounting bracket + sealing screws



Note: See part builder (p. K-11) for additional kit options.

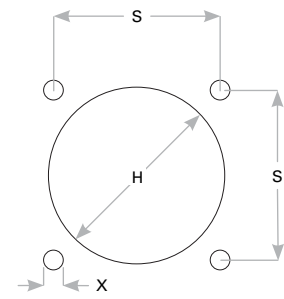
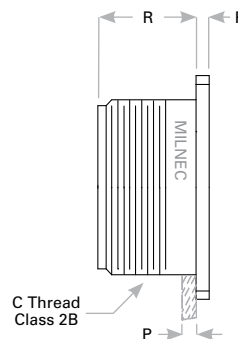
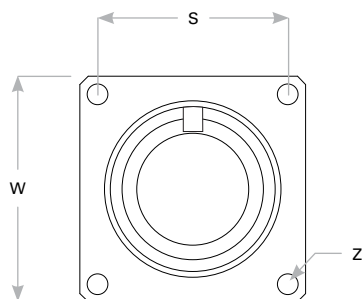
TMCD Compatibility

Compatible Brands	Plugs
MIL-DTL-5015 Crimp	MS3456, MS3459
Aero Electric	AE556, AE559
Amphenol / Matrix	9446, 9816
J-Tech / Conesys	DC62, DC63
ITT Cannon	CV3456, CV3459

Stowage Receptacle Dimensions

Shell Size	W	S	Z	C Thread Class 2B	R	F	P Max Rear Panel*	S	X	H
10S	1.031 (26.2)	.719 (18.3)	.130 (3.3)	.625-24 UNEF	.593 (15.1)	.156 (4.0)	.125 (3.2)	.719 (18.3)	.120 (3.1)	.688 (17.5)
12S	1.125 (28.6)	.812 (20.6)	.130 (3.3)	.750-20 UNEF	.593 (15.1)	.156 (4.0)	.125 (3.2)	.812 (20.6)	.120 (3.1)	.812 (20.6)
14S	1.219 (31.0)	.906 (23.0)	.130 (3.3)	.875-20 UNEF	.593 (15.1)	.156 (4.0)	.125 (3.2)	.906 (23.0)	.120 (3.1)	.938 (23.8)
16S	1.312 (33.3)	.969 (24.6)	.130 (3.3)	1.000-20 UNEF	.593 (15.1)	.156 (4.0)	.125 (3.2)	.969 (24.6)	.120 (3.1)	1.062 (27.0)
18	1.406 (35.7)	1.062 (27.0)	.130 (3.3)	1.125-18 UNEF	.781 (19.8)	.203 (5.2)	.125 (3.2)	1.062 (27.0)	.120 (3.1)	1.188 (30.2)
20	1.531 (38.9)	1.156 (29.4)	.130 (3.3)	1.250-18 UNEF	.781 (19.8)	.203 (5.2)	.125 (3.2)	1.156 (29.4)	.120 (3.1)	1.312 (33.3)
22	1.656 (42.1)	1.250 (31.8)	.130 (3.3)	1.375-18 UNEF	.781 (19.8)	.203 (5.2)	.125 (3.2)	1.250 (31.8)	.120 (3.1)	1.438 (36.5)
24	1.781 (45.2)	1.375 (34.9)	.157 (4.0)	1.500-18 UNEF	.843 (21.4)	.203 (5.2)	.125 (3.2)	1.375 (34.9)	.147 (3.7)	1.562 (39.7)
28	2.031 (51.6)	1.562 (39.7)	.157 (4.0)	1.750-18 UNS	.843 (21.4)	.203 (5.2)	.125 (3.2)	1.562 (39.7)	.147 (3.7)	1.812 (46.0)
32	2.281 (57.9)	1.750 (44.5)	.183 (4.6)	2.000-18 UNS	.906 (23.0)	.359 (9.1)	.125 (3.2)	1.750 (44.5)	.173 (4.4)	2.062 (52.4)
36	2.531 (64.3)	1.938 (49.2)	.183 (4.6)	2.250-16 UN	.906 (23.0)	.359 (9.1)	.125 (3.2)	1.938 (49.2)	.173 (4.4)	2.312 (58.7)

Dimensions are in inches (mm). * Max panel thickness applies only to rear mount applications to ensure proper coupling clearance.



Panel Cutout