

Straight Shrink Boot

TM Series • MIL-DTL-5015 Crimp Type Connectors



TMK2 - 4 - 100

- 1 **BASIC PART NUMBER**
TMK2 Straight shrink boot
- 2 **BOOT SIZE**
See Boot Dimensions table below
- 3 **STANDARD MATERIAL**

- 100** Halogen-free, semi-flexible elastomer pre-coated with hot-melt adhesive. Material has excellent fire-safety characteristics and is especially suited where people are confined in enclosed spaces (mass transit, aviation, vehicles, offshore, etc).
- Temp: -22° to +302°F (-30° to +150°C)
 - Low-smoke index as defined by NES 711
 - Low-toxicity index as defined by NES 713
 - High-temp index as defined by NES 715

Environmental protection, low-profile design

A shrink boot provides complete IP67 environmental protection and strain relief. Must be used with a boot adapter.

* Please consult an authorized distributor for other high-temperature materials and adhesive options.

Boot Size Recommendations

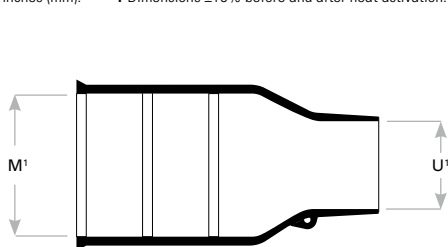
Boot Size	Cable Range		Shell Size											
	Min	Max	10	12	14	16	18	20	22	24	28	32	36	
2	.220 (5.6)	.550 (14.0)	✓	*	✓	*								
3	.230 (5.9)	.590 (15.0)			✓	*	✓	*						
4	.280 (7.1)	.710 (18.0)						*	*					
5	.330 (8.4)	.830 (21.0)						✓	✓	*	*			
6	.390 (9.9)	.980 (25.0)								✓	✓	*	*	
7	.620 (15.7)	1.540 (39.0)										✓		*
8	.660 (16.8)	1.650 (42.0)											✓	✓

Dimensions are in inches (mm). ✓ Recommended boot size for (TMAB) Boot Adapter, p. K-49. * Recommended boot size for (TMD2, TMD3, TMD4) EMI/RFI Banding Boot Adapter, p. K-50.

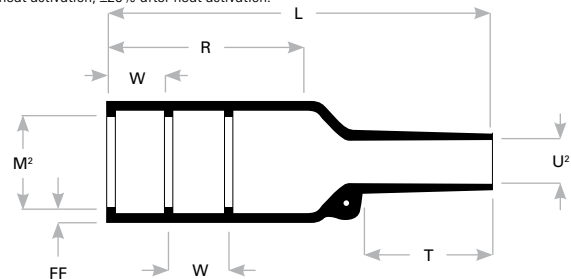
Boot Dimensions

Boot Size	M ¹	U ¹	M ²	U ²	L ¹	R ¹	T [*]	W [†]	FF [*]
2	.940 (24.0)	.550 (14.0)	.410 (10.4)	.220 (5.6)	1.500 (38.0)	.830 (21.0)	.330 (8.5)	.470 (12.0)	.060 (1.6)
3	1.180 (30.0)	.590 (15.0)	.560 (14.2)	.230 (5.9)	2.170 (55.0)	1.260 (32.0)	.450 (11.5)	.470 (12.0)	.070 (1.8)
4	1.220 (31.0)	.710 (18.0)	.710 (18.0)	.280 (7.1)	2.640 (67.0)	1.380 (35.0)	.670 (17.0)	.790 (20.0)	.070 (1.8)
5	1.420 (36.0)	.830 (21.0)	.880 (22.4)	.330 (8.4)	3.150 (80.0)	1.650 (42.0)	.760 (19.5)	.790 (20.0)	.080 (2.0)
6	1.690 (43.0)	.980 (25.0)	1.110 (28.2)	.390 (9.9)	3.900 (99.0)	2.400 (61.0)	.820 (21.0)	.790 (20.0)	.090 (2.2)
7	2.050 (52.0)	1.540 (39.0)	1.380 (35.1)	.620 (15.7)	5.120 (130.0)	2.830 (72.0)	1.530 (39.0)	.790 (20.0)	.130 (3.2)
8	2.600 (66.0)	1.650 (42.0)	1.750 (44.5)	.660 (16.8)	6.690 (170.0)	3.540 (90.0)	2.020 (51.5)	.790 (20.0)	.150 (3.8)

Dimensions are in inches (mm). † Dimensions ±10% before and after heat activation. * Dimensions ±10% before heat activation, ±20% after heat activation.



Before Heat Activation



After Heat Activation

Rev. 1718