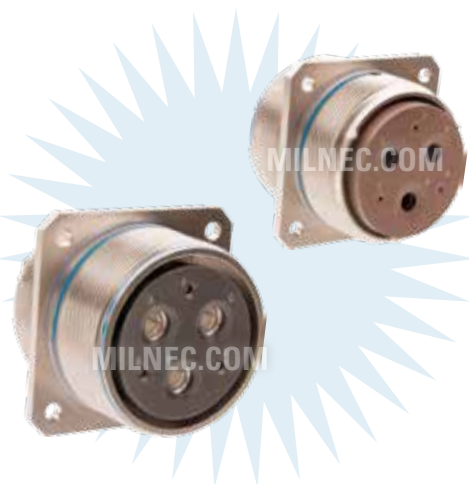


MS3450 Connector Type Datasheet

TM Series • MIL-DTL-5015 Crimp Type Connectors



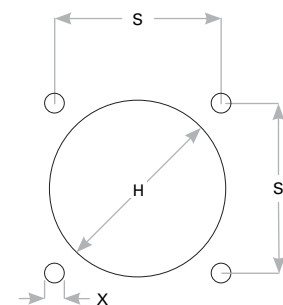
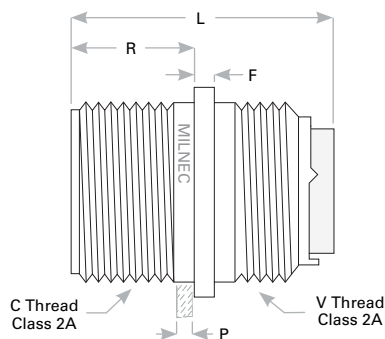
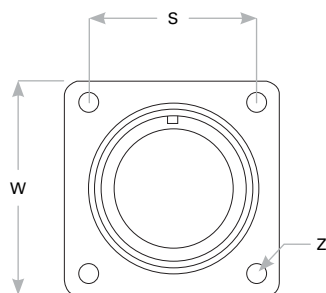
TM00 Cross Reference & Compatibility

Compatible Brands	Equivalent	Mates
MIL-DTL-5015 Crimp	MS3450	MS3456, MS3459
Aero Electric	AE550	AE556, AE559
Amphenol / Matrix	9440	9446, 9816
J-Tech / Conesys	DC60, DC61	DC62, DC63
ITT Cannon	CV3450	CV3456, CV3459

Receptacle Dimensions

Shell Size	W	Z	C Thread Class 2A	L Max		R	F	V Thread Class 2A	P Max Rear Panel*	S	X	H
				#12, #16 Contacts	#0, #4, #8 Contacts							
10SL	1.000 (25.4)	.120 (3.0)	.6250-24 UNEF	2.031 (51.6)	-	.562 (14.3)	.083 (2.1)	.6250-24 UNEF	.125 (3.2)	.719 (18.3)	.120 (3.1)	.688 (17.5)
12S	1.094 (27.8)	.120 (3.0)	.7500-20 UNEF	2.031 (51.6)	-	.562 (14.3)	.083 (2.1)	.7500-20 UNEF	.125 (3.2)	.812 (20.6)	.120 (3.1)	.812 (20.6)
14S	1.188 (30.2)	.120 (3.0)	.8750-20 UNEF	2.031 (51.6)	-	.562 (14.3)	.083 (2.1)	.8750-20 UNEF	.125 (3.2)	.906 (23.0)	.120 (3.1)	.938 (23.8)
16S	1.281 (32.5)	.120 (3.0)	1.0000-20 UNEF	2.031 (51.6)	-	.562 (14.3)	.083 (2.1)	1.0000-20 UNEF	.125 (3.2)	.969 (24.6)	.120 (3.1)	1.062 (27.0)
18	1.375 (34.9)	.120 (3.0)	1.1250-18 UNEF	2.125 (54.0)	2.500 (63.5)	.750 (19.1)	.125 (3.2)	1.0625-18 UNEF	.125 (3.2)	1.062 (27.0)	.120 (3.1)	1.188 (30.2)
20	1.500 (38.1)	.120 (3.0)	1.2500-18 UNEF	2.125 (54.0)	2.500 (63.5)	.750 (19.1)	.125 (3.2)	1.1875-18 UNEF	.125 (3.2)	1.156 (29.4)	.120 (3.1)	1.312 (33.3)
22	1.625 (41.3)	.120 (3.0)	1.3750-18 UNEF	2.125 (54.0)	2.500 (63.5)	.750 (19.1)	.125 (3.2)	1.3125-18 UNEF	.125 (3.2)	1.250 (31.8)	.120 (3.1)	1.438 (36.5)
24	1.750 (44.5)	.147 (3.7)	1.5000-18 UNEF	2.125 (54.0)	2.500 (63.5)	.812 (20.6)	.125 (3.2)	1.4375-18 UNEF	.125 (3.2)	1.375 (34.9)	.147 (3.7)	1.562 (39.7)
28	2.000 (50.8)	.147 (3.7)	1.7500-18 UNS	2.125 (54.0)	2.500 (63.5)	.812 (20.6)	.125 (3.2)	1.7500-18 UNS	.125 (3.2)	1.562 (39.7)	.147 (3.7)	1.812 (46.0)
32	2.250 (57.2)	.173 (4.4)	2.0000-18 UNS	2.125 (54.0)	2.500 (63.5)	.875 (22.2)	.125 (3.2)	2.0000-18 UNS	.125 (3.2)	1.750 (44.5)	.173 (4.4)	2.062 (52.4)
36	2.500 (63.5)	.173 (4.4)	2.2500-16 UN	2.125 (54.0)	2.500 (63.5)	.875 (22.2)	.125 (3.2)	2.2500-16 UN	.125 (3.2)	1.938 (49.2)	.173 (4.4)	2.312 (58.7)

Dimensions are in inches (mm). * Max panel thickness applies only to rear mount applications to ensure proper coupling clearance.



Panel Cutout

TM00 N 28-22 S N - R2(055) - 03

- 1 **BASIC PART NUMBER**
TM00 Wall mount receptacle
- 2 **MATERIAL & FINISH**
N Aluminum, electroless nickel
W Aluminum, olive drab cadmium
- 3 **SHELL SIZE & INSERT ARRANGEMENT**
See Insert Arrangement Selection table, p. K-12
- 4 **CONTACT STYLE**
P Pin
S Socket
- 5 **INSERT ROTATION**
N Normal or W, X, Y, Z, see p. K-12 for availability
- 6 **OPTIONAL BACKSHELL KIT (OMIT FOR NONE)**
B2 Straight strain relief (self-locking), p. K-27
R2() Straight EMI/RFI environmental, p. K-38
(Add dash number for appropriate shell size, see p. K-38)
- 7 **OPTIONAL ACCESSORY KIT (OMIT FOR NONE)**
02 Protective cover + mounting gasket
03 02 kit + mounting bracket + sealing screws

Note: See part builder (p. K-11) for additional kit options.