

MS3451 Connector Type Datasheet

TM Series • MIL-DTL-5015 Crimp Type Connectors

TM01 N 28-22 S N - R2(055) - 02

- 1 **BASIC PART NUMBER**
TM01 Cable mount receptacle
- 2 **MATERIAL & FINISH**
N Aluminum, electroless nickel
W Aluminum, olive drab cadmium
- 3 **SHELL SIZE & INSERT ARRANGEMENT**
See Insert Arrangement Selection table, p. K-12
- 4 **CONTACT STYLE**
P Pin
S Socket
- 5 **INSERT ROTATION**
N Normal or W, X, Y, Z, see p. K-12 for availability
- 6 **OPTIONAL BACKSHELL KIT (OMIT FOR NONE)**
B2 Straight strain relief (self-locking), p. K-27
R2() Straight EMI/RFI environmental, p. K-38
(Add dash number for appropriate shell size, see p. K-38)
- 7 **OPTIONAL ACCESSORY KIT (OMIT FOR NONE)**
02 Protective cover

Note: See part builder (p. K-11) for additional kit options.



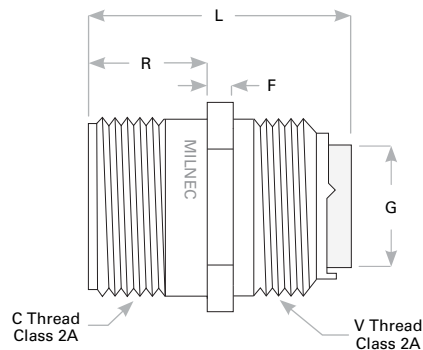
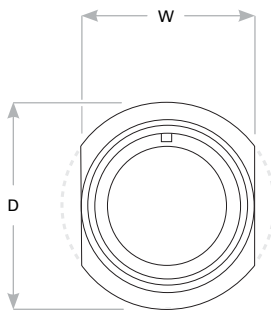
TM01 Cross Reference & Compatibility

Compatible Brands	Equivalent	Mates
MIL-DTL-5015 Crimp	MS3451	MS3456, MS3459
Aero Electric	AE551	AE556, AE559
Amphenol / Matrix	9441	9446, 9816
J-Tech / Conesys	—	DC62, DC63
ITT Cannon	CV3451	CV3456, CV3459

Receptacle Dimensions

Shell Size	W	D	C Thread Class 2A	L Max		R	F	G	V Thread Class 2A
				#12, #16 Contacts	#0, #4, #8 Contacts				
10SL	.629 (16.0)	.854 (21.7)	.6250-24 UNEF	2.031 (51.6)	-	.562 (14.3)	.083 (2.1)	.405 (10.3)	.6250-24 UNEF
12S	.754 (19.2)	.974 (24.7)	.7500-20 UNEF	2.031 (51.6)	-	.562 (14.3)	.083 (2.1)	.549 (13.9)	.7500-20 UNEF
14S	.879 (22.3)	1.099 (27.9)	.8750-20 UNEF	2.031 (51.6)	-	.562 (14.3)	.083 (2.1)	.665 (16.9)	.8750-20 UNEF
16S	1.005 (25.5)	1.224 (31.1)	1.0000-20 UNEF	2.031 (51.6)	-	.562 (14.3)	.083 (2.1)	.790 (20.1)	1.0000-20 UNEF
18	1.131 (28.7)	1.349 (34.3)	1.1250-18 UNEF	2.125 (54.0)	2.500 (63.5)	.750 (19.1)	.125 (3.2)	.869 (22.1)	1.0625-18 UNEF
20	1.256 (31.9)	1.474 (37.4)	1.2500-18 UNEF	2.125 (54.0)	2.500 (63.5)	.750 (19.1)	.125 (3.2)	.994 (25.2)	1.1875-18 UNEF
22	1.381 (35.1)	1.599 (40.6)	1.3750-18 UNEF	2.125 (54.0)	2.500 (63.5)	.750 (19.1)	.125 (3.2)	1.119 (28.4)	1.3125-18 UNEF
24	1.506 (38.3)	1.715 (43.6)	1.5000-18 UNEF	2.125 (54.0)	2.500 (63.5)	.812 (20.6)	.125 (3.2)	1.244 (31.6)	1.4375-18 UNEF
28	1.756 (44.6)	1.974 (50.1)	1.7500-18 UNS	2.125 (54.0)	2.500 (63.5)	.812 (20.6)	.125 (3.2)	1.465 (37.2)	1.7500-18 UNS
32	2.007 (51.0)	2.224 (56.5)	2.0000-18 UNS	2.125 (54.0)	2.500 (63.5)	.870 (22.1)	.125 (3.2)	1.715 (43.6)	2.0000-18 UNS
36	2.257 (57.3)	2.474 (62.8)	2.2500-16 UN	2.125 (54.0)	2.500 (63.5)	.870 (22.1)	.125 (3.2)	1.930 (49.0)	2.2500-16 UN

Dimensions are in inches (mm).



Rev. 1828.1