

# MS3452 Connector Type Datasheet

TM Series • MIL-DTL-5015 Crimp Type Connectors

## TM02 N 28-22 S N - 03

- 1 **BASIC PART NUMBER**  
TM02 Box mount receptacle
- 2 **MATERIAL & FINISH**  
N Aluminum, electroless nickel  
W Aluminum, olive drab cadmium
- 3 **SHELL SIZE & INSERT ARRANGEMENT**  
See Insert Arrangement Selection table, p. K-12
- 4 **CONTACT STYLE**  
P Pin  
S Socket
- 5 **INSERT ROTATION**  
N Normal or W, X, Y, Z, see p. K-12 for availability
- 6 **OPTIONAL ACCESSORY KIT (OMIT FOR NONE)**  
02 Protective cover + mounting gasket  
03 02 kit + mounting bracket + sealing screws

Note: See part builder (p. K-11) for additional kit options.



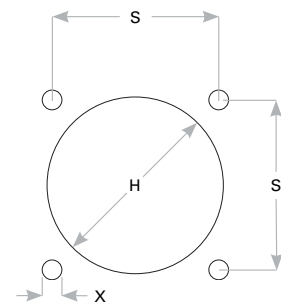
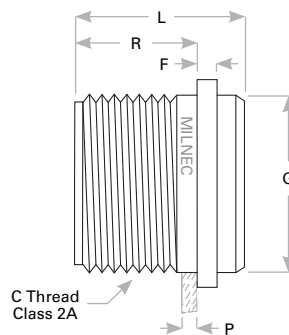
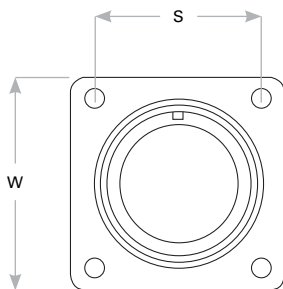
### TM02 Cross Reference & Compatibility

Compatible Brands	Equivalent	Mates
MIL-DTL-5015 Crimp	MS3452	MS3456, MS3459
Aero Electric	AE552	AE556, AE559
Amphenol / Matrix	9442	9446, 9816
J-Tech / Conesys	—	DC62, DC63
ITT Cannon	CV3452	CV3456, CV3459

### Receptacle Dimensions

Shell Size	W	C Thread Class 2A	L Max		R	F	G	P Max Rear Panel†	S	X	H
			#12, #16 Contacts	#0, #4, #8 Contacts							
10SL	1.000 (25.4)	.6250-24 UNEF	1.662 (42.2)	-	.562 (14.3)	.083 (2.1)	.625 (15.9)	.125 (3.2)	.719 (18.3)	.120 (3.1)	.688 (17.5)
12S	1.094 (27.8)	.7500-20 UNEF	1.662 (42.2)	-	.562 (14.3)	.083 (2.1)	.750 (19.1)	.125 (3.2)	.812 (20.6)	.120 (3.1)	.812 (20.6)
14S	1.188 (30.2)	.8750-20 UNEF	1.662 (42.2)	-	.562 (14.3)	.083 (2.1)	.875 (22.2)	.125 (3.2)	.906 (23.0)	.120 (3.1)	.938 (23.8)
16S	1.281 (32.5)	1.0000-20 UNEF	1.662 (42.2)	-	.562 (14.3)	.083 (2.1)	1.000 (25.4)	.125 (3.2)	.969 (24.6)	.120 (3.1)	1.062 (27.0)
18	1.375 (34.9)	1.1250-18 UNEF	1.662 (42.2)	1.937 (49.2)	.750 (19.1)	.125 (3.2)	1.062 (27.0)	.125 (3.2)	1.062 (27.0)	.120 (3.1)	1.188 (30.2)
20	1.500 (38.1)	1.2500-18 UNEF	1.662 (42.2)	1.937 (49.2)	.750 (19.1)	.125 (3.2)	1.187 (30.1)	.125 (3.2)	1.156 (29.4)	.120 (3.1)	1.312 (33.3)
22	1.625 (41.3)	1.3750-18 UNEF	1.662 (42.2)	1.937 (49.2)	.750 (19.1)	.125 (3.2)	1.312 (33.3)	.125 (3.2)	1.250 (31.8)	.120 (3.1)	1.438 (36.5)
24	1.750 (44.5)	1.5000-18 UNEF	1.662 (42.2)	1.937 (49.2)	.812 (20.6)	.125 (3.2)	1.437 (36.5)	.125 (3.2)	1.375 (34.9)	.147 (3.7)	1.562 (39.7)
28	2.000 (50.8)	1.7500-18 UNS	1.662 (42.2)	1.937 (49.2)	.812 (20.6)	.125 (3.2)	1.750 (44.5)	.125 (3.2)	1.562 (39.7)	.147 (3.7)	1.812 (46.0)
32	2.250 (57.2)	2.0000-18 UNS	1.662 (42.2)	1.937 (49.2)	.875 (22.2)	.125 (3.2)	2.000 (50.8)	.125 (3.2)	1.750 (44.5)	.173 (4.4)	2.062 (52.4)
36	2.500 (63.5)	2.2500-16 UN	1.662 (42.2)	1.937 (49.2)	.875 (22.2)	.125 (3.2)	2.250 (57.2)	.125 (3.2)	1.938 (49.2)	.173 (4.4)	2.312 (58.7)

Dimensions are in inches (mm). † Max panel thickness applies only to rear mount applications to ensure proper coupling clearance.



Panel Cutout

Rev. 1825