

# MS3105 Type Dummy Stowage Receptacle

Ry85049 Series • M85049 Type Backshells



Photo for example only

## Ry3105 - 12

- 1 **BASIC PART NUMBER**  
Ry3105  
MS3105 type  
Dummy stowage receptacle
- 2 **SHELL SIZE**  
See Dimensions table below

## Ry3105 Compatibility

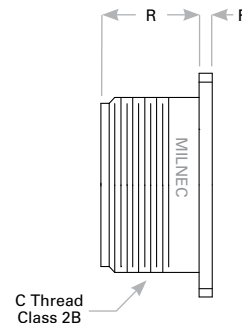
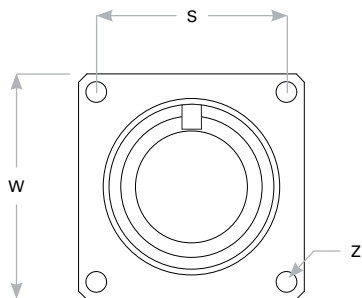
### Compatible Connector Series

AS31051

## Receptacle Dimensions

Shell Size	S	W Max	Z Max	R Max	C Thread Class 2A	F Max
8S	0.594 (15.1)	0.906 (23.0)	0.130 (3.3)	0.593 (15.1)	1/2 -28 UNEF	0.156 (4.0)
10S	0.719 (18.3)	1.031 (26.2)	0.130 (3.3)	0.593 (15.1)	5/8 -24 UNEF	0.156 (4.0)
12S	0.812 (20.6)	1.125 (28.6)	0.130 (3.3)	0.593 (15.1)	3/4 -20 UNEF	0.156 (4.0)
12	0.812 (20.6)	1.125 (28.6)	0.130 (3.3)	0.781 (19.8)	3/4 -20 UNEF	0.156 (4.0)
14S	0.906 (23.0)	1.219 (31.0)	0.130 (3.3)	0.593 (15.1)	7/8 -20 UNEF	0.156 (4.0)
14	0.906 (23.0)	1.219 (31.0)	0.130 (3.3)	0.781 (19.8)	7/8 -20 UNEF	0.156 (4.0)
16S	0.969 (24.6)	1.312 (33.3)	0.130 (3.3)	0.593 (15.1)	1 -20 UNEF	0.156 (4.0)
16	0.969 (24.6)	1.312 (33.3)	0.130 (3.3)	0.781 (19.8)	1 -20 UNEF	0.156 (4.0)
18	1.062 (27.0)	1.406 (35.7)	0.130 (3.3)	0.781 (19.8)	1 1/8 -18 UNEF	0.203 (5.2)
20	1.156 (29.4)	1.531 (38.9)	0.130 (3.3)	0.781 (19.8)	1 1/4 -18 UNEF	0.203 (5.2)
22	1.250 (31.8)	1.656 (42.1)	0.130 (3.3)	0.781 (19.8)	1 3/8 -18 UNEF	0.203 (5.2)
24	1.375 (34.9)	1.781 (45.2)	0.157 (4.0)	0.843 (21.4)	1 1/2 -18 UNEF	0.203 (5.2)
28	1.562 (39.7)	2.031 (51.6)	0.157 (4.0)	0.843 (21.4)	1 3/4 -18 UNS	0.203 (5.2)
32	1.750 (44.5)	2.281 (57.9)	0.183 (4.6)	0.906 (23.0)	2 -18 UNS	0.359 (9.1)
36	1.938 (49.2)	2.531 (64.3)	0.183 (4.6)	0.906 (23.0)	2 1/4 -16 UN	0.359 (9.1)
40	2.188 (55.6)	2.781 (70.6)	0.183 (4.6)	0.906 (23.0)	2 1/2 -16 UN	0.359 (9.1)
44	2.375 (60.3)	3.031 (77.0)	0.183 (4.6)	0.906 (23.0)	2 3/4 -16 UN	0.359 (9.1)
48	2.625 (66.7)	3.281 (83.3)	0.183 (4.6)	0.906 (23.0)	3 -16 UN	0.359 (9.1)

Dimensions are in inches (mm).



Rev. 1825